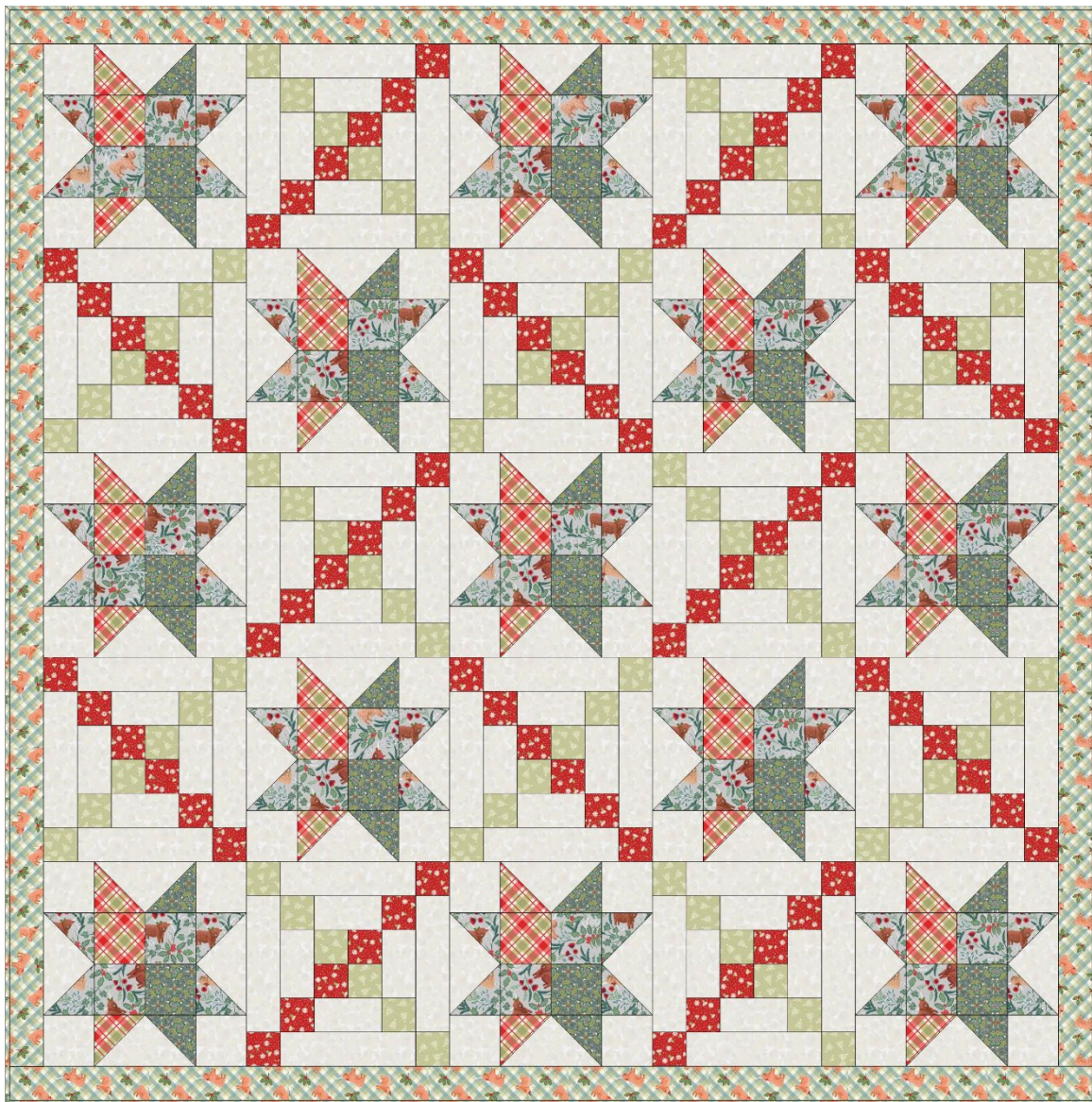




Designed and made by Sally Ablett – Quilt 1

Size 64" x 64" - unfinished block size 12½" x 12½"



Main Diagram



## Fabrics from A Celtic Christmas collection

### Requirements

1. C130.A - Highlands on misty silver -  $\frac{5}{8}$ yd - 70cm
2. C131.B - Celtic trees on festive sage -  $\frac{3}{8}$ yd - 40cm
3. C132.C - Christmas check -  $\frac{3}{8}$ yd - 40cm
4. C133.C - Festive Celtic leaves winter -  $\frac{3}{8}$ yd - 40cm
5. C134.B - Thistledown on silver -  $\frac{3}{8}$ yd - 40cm
6. C135.B - Highlands and holly icy meadow gingham  $1\frac{1}{4}$ yd -  $1\frac{1}{4}$ m
7. BB02 - Cream -  $2\frac{1}{2}$ yd -  $2\frac{1}{2}$ m

Wadding and backing 70" x 70"

**All measurements include  $\frac{1}{4}$ " seam allowances; press each seam as you go.**

**You need to join your fabric to get the length for the border strips.**

### Cutting

#### From fabric 1 cut

26 x  $2\frac{7}{8}$ " x  $2\frac{7}{8}$ " cut in half diagonally once (block 1)

26 x  $3\frac{1}{2}$ " x  $3\frac{1}{2}$ " (block 1)

#### From fabric 2 cut

72 x  $2\frac{1}{2}$ " x  $2\frac{1}{2}$ " (block 2)

#### From fabric 3 cut

13 x  $2\frac{7}{8}$ " x  $2\frac{7}{8}$ " cut in half diagonally once (block 1)

13 x  $3\frac{1}{2}$ " x  $3\frac{1}{2}$ " (block 1)

#### From fabric 4 cut

13 x  $2\frac{7}{8}$ " x  $2\frac{7}{8}$ " cut in half diagonally once (block 1)

13 x  $3\frac{1}{2}$ " x  $3\frac{1}{2}$ " (block 1)

#### From fabric 5 cut

72 x  $2\frac{1}{2}$ " x  $2\frac{1}{2}$ " (block 2)

#### From fabric 6 cut

2 x  $2\frac{1}{2}$ " x  $64\frac{1}{2}$ " top & bottom of outer border

2 x  $2\frac{1}{2}$ " x  $60\frac{1}{2}$ " sides of outer border

#### From fabric 7 cut

13 x 7¼" x 7¼" cut in half diagonally twice (block 1)

52 x 3½" x 3½" (block 1)

48 x 2½" x 8½" (block 2)

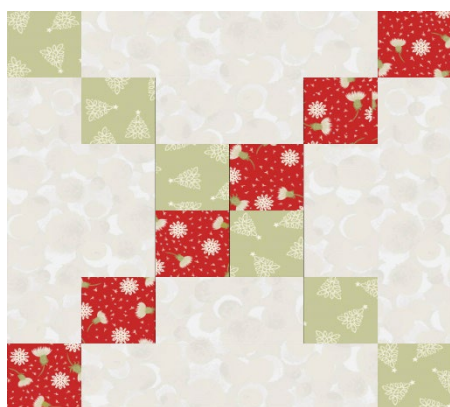
48 x 2½" x 4½" (block 2)

### Making up the blocks.



**Block 1.**

Lay out the fabric pieces for the block. Make up the Flying Gesses block by sewing a small triangle to each side of the larger triangle. Look at the main diagram for placement of fabrics. Next stitch the center squares together in rows and then the rows together. Lay out all the block pieces and stitch in rows and then sew the rows together to complete the block. You need 13 blocks in total.



**Block 2.**

Place your fabric pieces as in the block diagram. Sew the four center squares together. Next add the side strips of fabric 7. For the top and bottom add a square to end and stitch the block. Do the same to the outer strips to complete the block. Look at the main diagram as to which way the colour squares go.

You need 12 blocks in total.

## Making up the quilt center.

Lay out all the blocks as in the main diagram. Sew the blocks in rows, pressing the seams in the opposite way each time as this will help when sewing the rows together.

## Outer border.

Stitch the sides to the quilt, press. Next add the top and bottom to complete the quilt.

## Quilting and binding

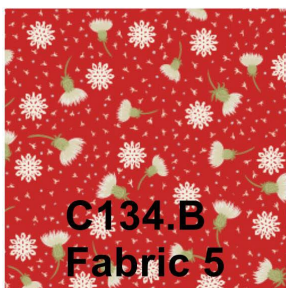
Sandwich the quilt top, wadding and backing together.

Quilt by hand or machine a pattern to match the quilt.

Maybe flowers. Trim the backing and wadding to size of quilt.

## Binding

Use your favorite method from fabric 1 for binding the quilt

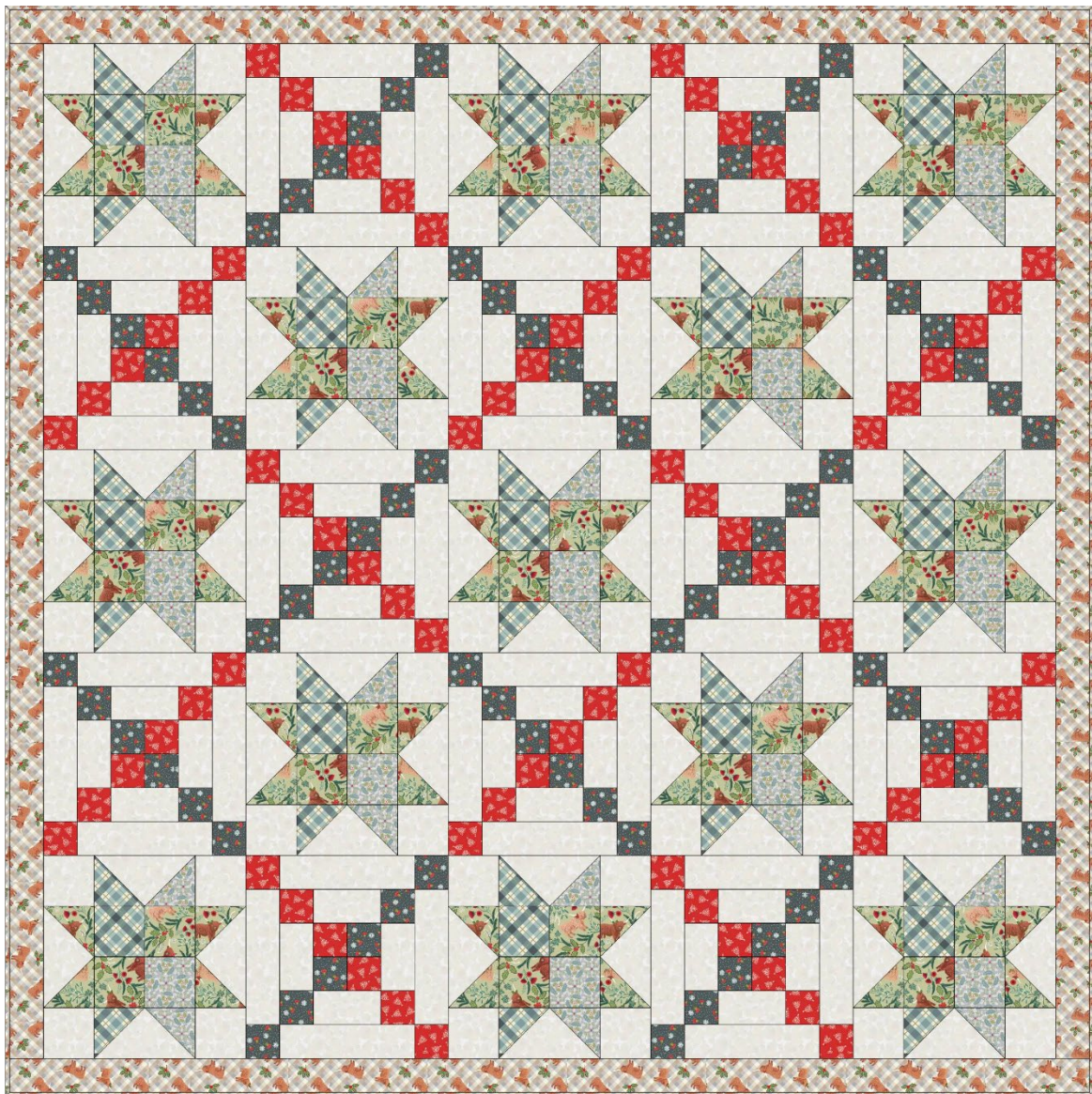


Sally Ablett © 2026



Designed and made by Sally Ablett – Quilt 2

Size 64" x 64" - unfinished block size 12½" x 12½"



Main Diagram



## Fabrics from A Celtic Christmas collection

### Requirements

1. C130.B - Highlands on festive sage -  $\frac{5}{8}$ yd - 70cm
2. C131.C - Celtic trees on winter red -  $\frac{3}{8}$ yd - 40cm
3. C132.A - Winter blue check -  $\frac{3}{8}$ yd - 40cm
4. C133.A - Festive Celtic leaves silver -  $\frac{3}{8}$ yd - 40cm
5. C134.C - Thistledown on iced forest -  $\frac{3}{8}$ yd - 40cm
6. C135.A - Highlands and holly winter morning gingham -  $1\frac{1}{4}$ m
7. BB02 - Cream -  $2\frac{1}{2}$ yd -  $2\frac{1}{2}$ m

Wadding and backing 70" x 70"

**All measurements include  $\frac{1}{4}$ " seam allowances; press each seam as you go.**

**You need to join your fabric to get the length for the border strips.**

### Cutting

#### From fabric 1 cut

26 x  $2\frac{7}{8}$ " x  $2\frac{7}{8}$ " cut in half diagonally once (block 1)

26 x  $3\frac{1}{2}$ " x  $3\frac{1}{2}$ " (block 1)

#### From fabric 2 cut

72 x  $2\frac{1}{2}$ " x  $2\frac{1}{2}$ " (block 2)

#### From fabric 3 cut

13 x  $2\frac{7}{8}$ " x  $2\frac{7}{8}$ " cut in half diagonally once (block 1)

13 x  $3\frac{1}{2}$ " x  $3\frac{1}{2}$ " (block 1)

#### From fabric 4 cut

13 x  $2\frac{7}{8}$ " x  $2\frac{7}{8}$ " cut in half diagonally once (block 1)

13 x  $3\frac{1}{2}$ " x  $3\frac{1}{2}$ " (block 1)

#### From fabric 5 cut

72 x  $2\frac{1}{2}$ " x  $2\frac{1}{2}$ " (block 2)

#### From fabric 6 cut

2 x  $2\frac{1}{2}$ " x  $64\frac{1}{2}$ " top & bottom of outer border

2 x  $2\frac{1}{2}$ " x  $60\frac{1}{2}$ " sides of outer border

#### From fabric 7 cut

13 x 7¼" x 7¼" cut in half diagonally twice (block 1)

52 x 3½" x 3½" (block 1)

48 x 2½" x 8½" (block 2)

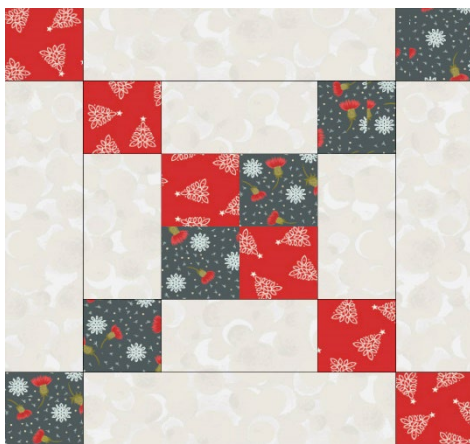
48 x 2½" x 4½" (block 2)

### Making up the blocks.



**Block 1.**

Lay out the fabric pieces for the block. Make up the Flying Gesses block by sewing a small triangle to each side of the larger triangle. Look at the main diagram for placement of fabrics. Next stitch the center squares together in rows and then the rows together. Lay out all the block pieces and stitch in rows and then sew the rows together to complete the block. You need 13 blocks in total.



**Block 2.**

Place your fabric pieces as in the block diagram. Sew the four center squares together. Next add the side strips of fabric 7. For the top and bottom add a square to end and stitch the block. Do the same to the outer strips to complete the block. Look at the main diagram as to which way the colour squares go.

You need 12 blocks in total.

## Making up the quilt center.

Lay out all the blocks as in the main diagram. Sew the blocks in rows, pressing the seams in the opposite way each time as this will help when sewing the rows together.

## Outer border.

Stitch the sides to the quilt, press. Next add the top and bottom to complete the quilt.

## Quilting and binding

Sandwich the quilt top, wadding and backing together.

Quilt by hand or machine a pattern to match the quilt.

Maybe flowers. Trim the backing and wadding to size of quilt.

## Binding

Use your favorite method from fabric 1 for binding the quilt

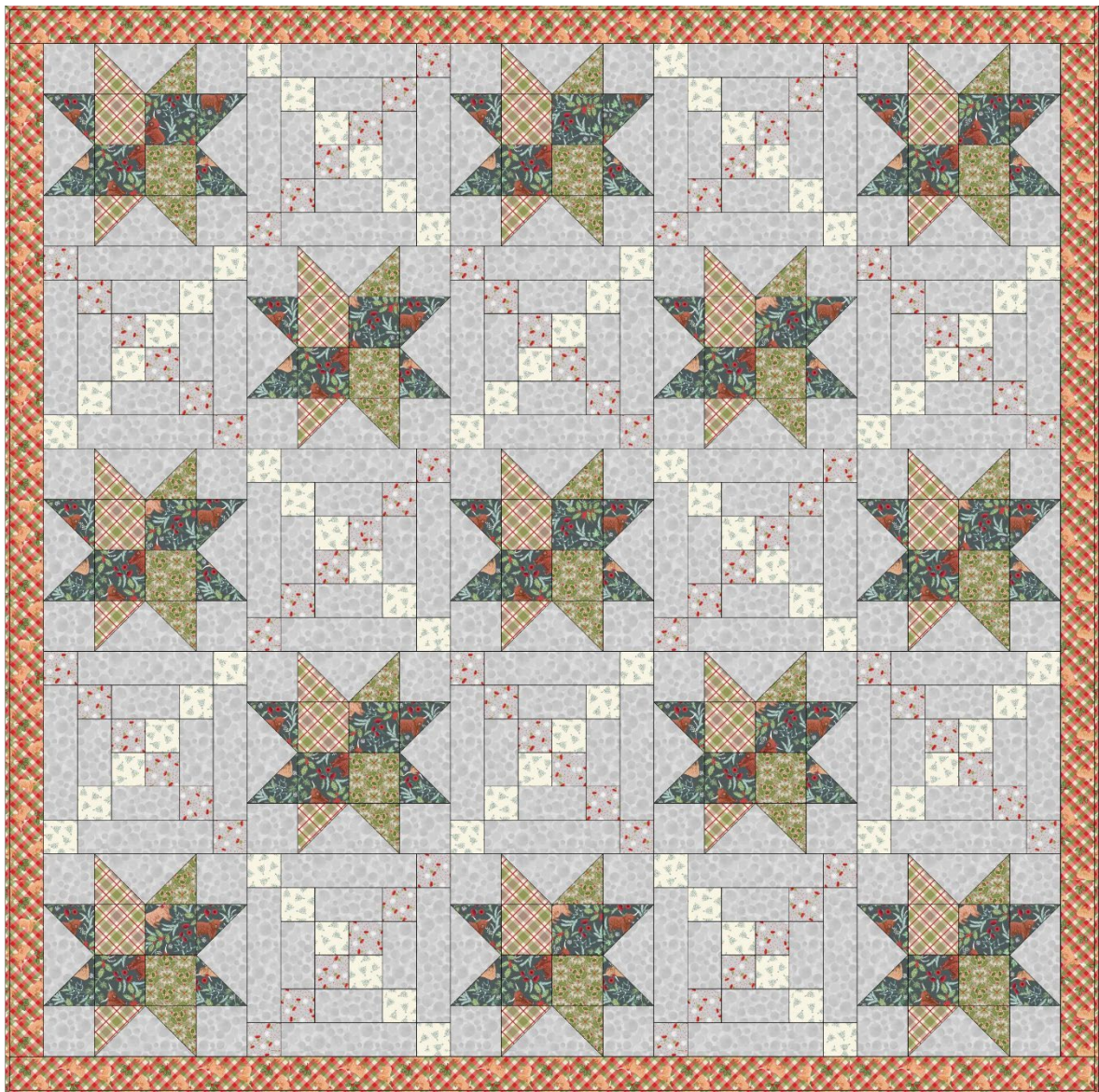


Sally Ablett © 2026



Designed and made by Sally Ablett – Quilt 3

Size 64" x 64" - unfinished block size 12½" x 12½"



Main Diagram



## **Fabrics from A Celtic Christmas collection**

### **Requirements**

1. C130.C - Highlands on iced forest -  $\frac{5}{8}$ yd - 70cm
2. C131.A - Celtic trees on cream -  $\frac{3}{8}$ yd - 40cm
3. C132.B - Highland check -  $\frac{3}{8}$ yd - 40cm
4. C133.B - Festive Celtic leaves green -  $\frac{3}{8}$ yd - 40cm
5. C134.A - Thistledown on silver -  $\frac{3}{8}$ yd - 40cm
6. C135.C - Highlands and holly festive gingham -  $1\frac{1}{4}$ yd -  $1\frac{1}{4}$ m
7. BB03 - Light grey -  $2\frac{1}{2}$ yd -  $2\frac{1}{2}$ m

Wadding and backing 70" x 70"

**All measurements include  $\frac{1}{4}$ " seam allowances; press each seam as you go.**

**You need to join your fabric to get the length for the border strips.**

### **Cutting**

#### **From fabric 1 cut**

26 x  $2\frac{7}{8}$ " x  $2\frac{7}{8}$ " cut in half diagonally once (block 1)

26 x  $3\frac{1}{2}$ " x  $3\frac{1}{2}$ " (block 1)

#### **From fabric 2 cut**

72 x  $2\frac{1}{2}$ " x  $2\frac{1}{2}$ " (block 2)

#### **From fabric 3 cut**

13 x  $2\frac{7}{8}$ " x  $2\frac{7}{8}$ " cut in half diagonally once (block 1)

13 x  $3\frac{1}{2}$ " x  $3\frac{1}{2}$ " (block 1)

#### **From fabric 4 cut**

13 x  $2\frac{7}{8}$ " x  $2\frac{7}{8}$ " cut in half diagonally once (block 1)

13 x  $3\frac{1}{2}$ " x  $3\frac{1}{2}$ " (block 1)

#### **From fabric 5 cut**

72 x  $2\frac{1}{2}$ " x  $2\frac{1}{2}$ " (block 2)

#### **From fabric 6 cut**

2 x  $2\frac{1}{2}$ " x  $64\frac{1}{2}$ " top & bottom of outer border

2 x  $2\frac{1}{2}$ " x  $60\frac{1}{2}$ " sides of outer border

#### **From fabric 7 cut**

13 x 7¼" x 7¼" cut in half diagonally twice (block 1)

52 x 3½" x 3½" (block 1)

48 x 2½" x 8½" (block 2)

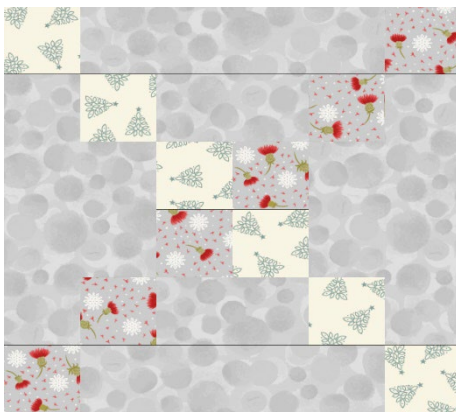
48 x 2½" x 4½" (block 2)

### **Making up the blocks.**



**Block 1.**

Lay out the fabric pieces for the block. Make up the Flying Gesses block by sewing a small triangle to each side of the larger triangle. Look at the main diagram for placement of fabrics. Next stitch the center squares together in rows and then the rows together. Lay out all the block pieces and stitch in rows and then sew the rows together to complete the block. You need 13 blocks in total.



**Block 2.**

Place your fabric pieces as in the block diagram. Sew the four center squares together. Next add the side strips of fabric 7. For the top and bottom add a square to end and stitch the block. Do the same to the outer strips to complete the block. Look at the main diagram as to which way the colour squares go.

You need 12 blocks in total.

## Making up the quilt center.

Lay out all the blocks as in the main diagram. Sew the blocks in rows, pressing the seams in the opposite way each time as this will help when sewing the rows together.

## Outer border.

Stitch the sides to the quilt, press. Next add the top and bottom to complete the quilt.

## Quilting and binding

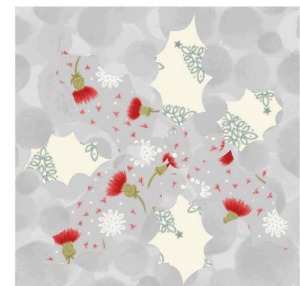
Sandwich the quilt top, wadding and backing together.

Quilt by hand or machine a pattern to match the quilt.

Maybe flowers. Trim the backing and wadding to size of quilt.

## Binding

Use your favorite method from fabric 1 for binding the quilt



Sally Ablett © 2026