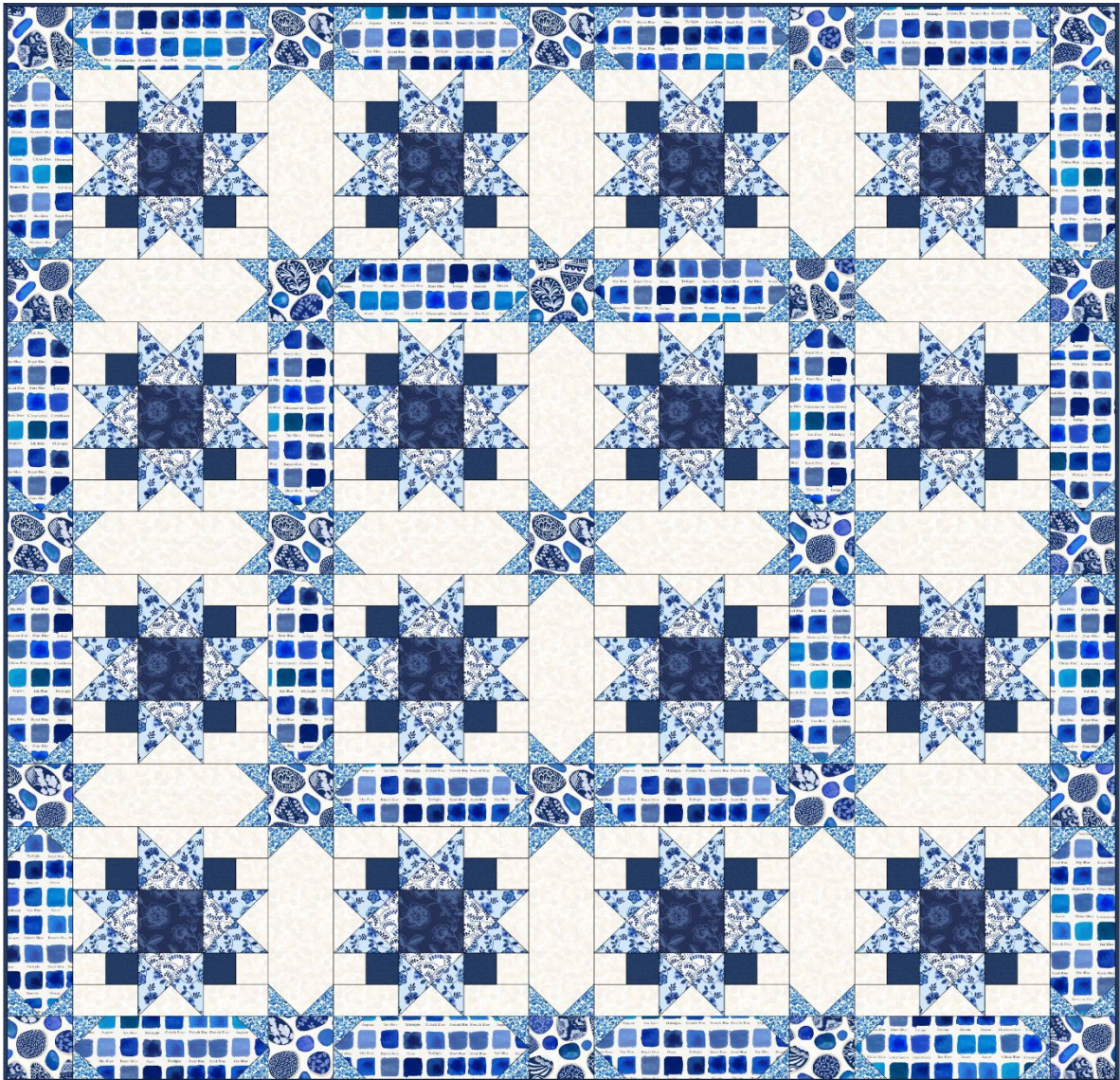




Designed and made by Sally Ablett - Quilt 1

Size of runner 68" x 68" - unfinished block size 12½" x 12½"



Main Diagram



Fabrics from Porcelain and Sea Glass collection

1. A993C - Crackle glaze - dark blue - $\frac{3}{4}$ yd - $\frac{3}{4}$ m
2. A994B - Cream and blue fronds - $\frac{3}{8}$ yd - 40cm
3. A995 - Ink swatches - $1\frac{1}{4}$ yd - $1\frac{1}{4}$ m
4. A996B - Inky floral trails on light blue - $\frac{5}{8}$ yd - 60cm
5. A997C - Rose trail on dark blue - fat $\frac{1}{4}$
6. A998A - Sea glass and pottery fragments on cream - $\frac{1}{2}$ yd - $\frac{1}{2}$ m
7. A999A - Watery swirls on cream - 1yd - 1m
8. BB01 - White - 2yd - 2m

Wadding and backing 75" x 75"

All measurements include $\frac{1}{4}$ " seam allowances; press each seam as you go.

Cutting

From fabric 1 cut

64 x $2\frac{1}{2}$ " x $2\frac{1}{2}$ "

From fabric 2 cut

16 x $5\frac{1}{4}$ " x $5\frac{1}{4}$ " cut in half diagonally twice - block

From fabric 3 cut

12 x $12\frac{1}{2}$ " x $4\frac{1}{2}$ " - sashing strips

12 x $4\frac{1}{2}$ " x $12\frac{1}{2}$ " - sashing strips

From fabric 4 cut

32 x $5\frac{1}{4}$ " x $5\frac{1}{4}$ " cut in half diagonally twice – block

From fabric 5 cut

16 x $4\frac{1}{2}$ " x $4\frac{1}{2}$ " - block

From fabric 6 cut

25 x $4\frac{1}{2}$ " x $4\frac{1}{2}$ " - sashing squares

From fabric 7 cut

160 x $2\frac{1}{2}$ " x $2\frac{1}{2}$ " - for sashing strips

From fabric 8 cut

16 x $4\frac{1}{2}$ " x $12\frac{1}{2}$ " - sashing strips

64 x 2½" x 2½"

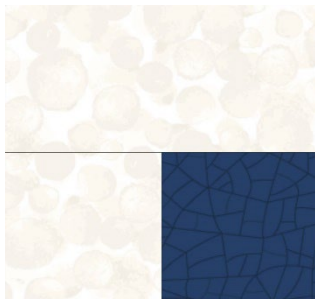
64 x 2½" x 4½"

16 x 5¼" x 5¼" cut in half diagonally twice – block

Making up the block



Lay out all the fabric pieces for the block. Start with the corner squares. Sew the two small squares together and then add the strip 2½" x 4½" to make the square.



Now stitch two sets of the small triangle together and then sew them together to make a square. Lay out all the pieces and stitch in rows. Last sew the three rows together to complete the block. You need 16 in total.

Sashing strips

On fabric 7 draw a diagonal line. Place this onto your strips of fabric 3 and 8 as in the diagram.



Sew on the out edge of the pencil line. Next cut a ¼" on the outside of the square.



Do the same as before.



You need to do the same to the other end.



You need 24 in total – 12 horizontally and 12 vertically with fabric 3 and 16 with fabric 8.

Making up the quilt

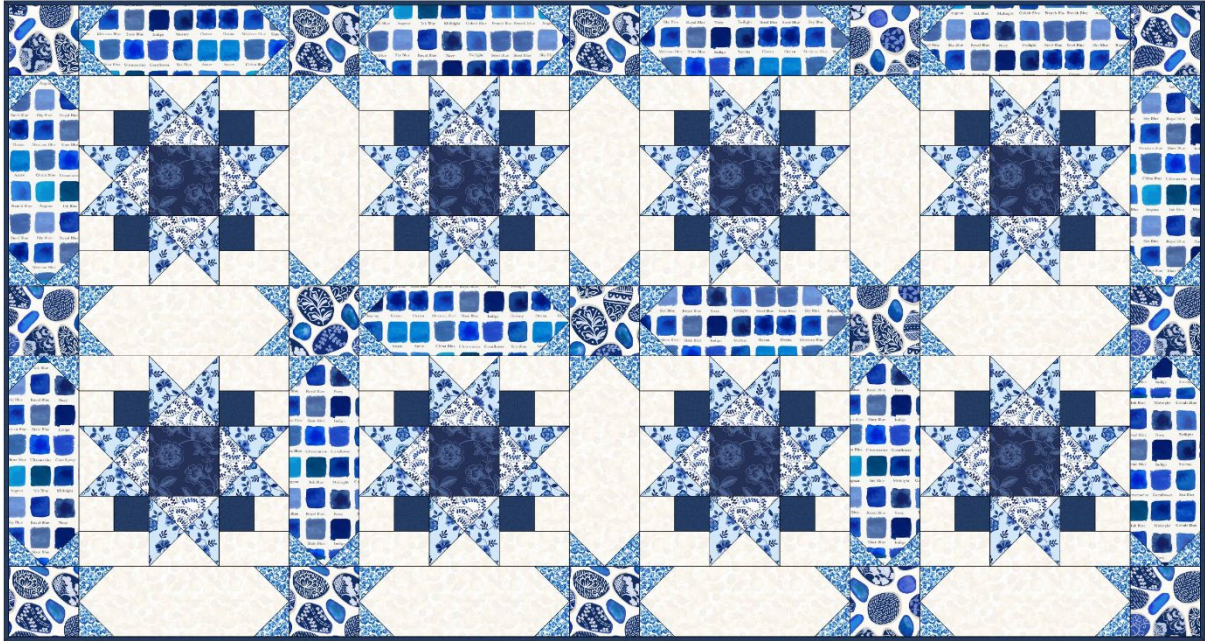
Lay out all your blocks, squares and sashing pieces as in the main diagram.

Rows 1, 3, 5, 7 and 9 will be the squares and strips.

Rows 2, 4, 6 and 8 will be sashing strips and blocks.

Start with the top row and press your seams left on the odd numbers.

Even numbers will be to the right, this will help when sewing the rows together. Stitch the rows together to complete the quilt top.



Five of the rows on the quilt.

Quilting and binding

Sandwich the quilt top, wadding and backing together.

Quilt by hand or machine a pattern to match the quilt.

Trim the backing and wadding to size of quilt.

Binding

Use your favorite method from fabric 1 for binding the quilt

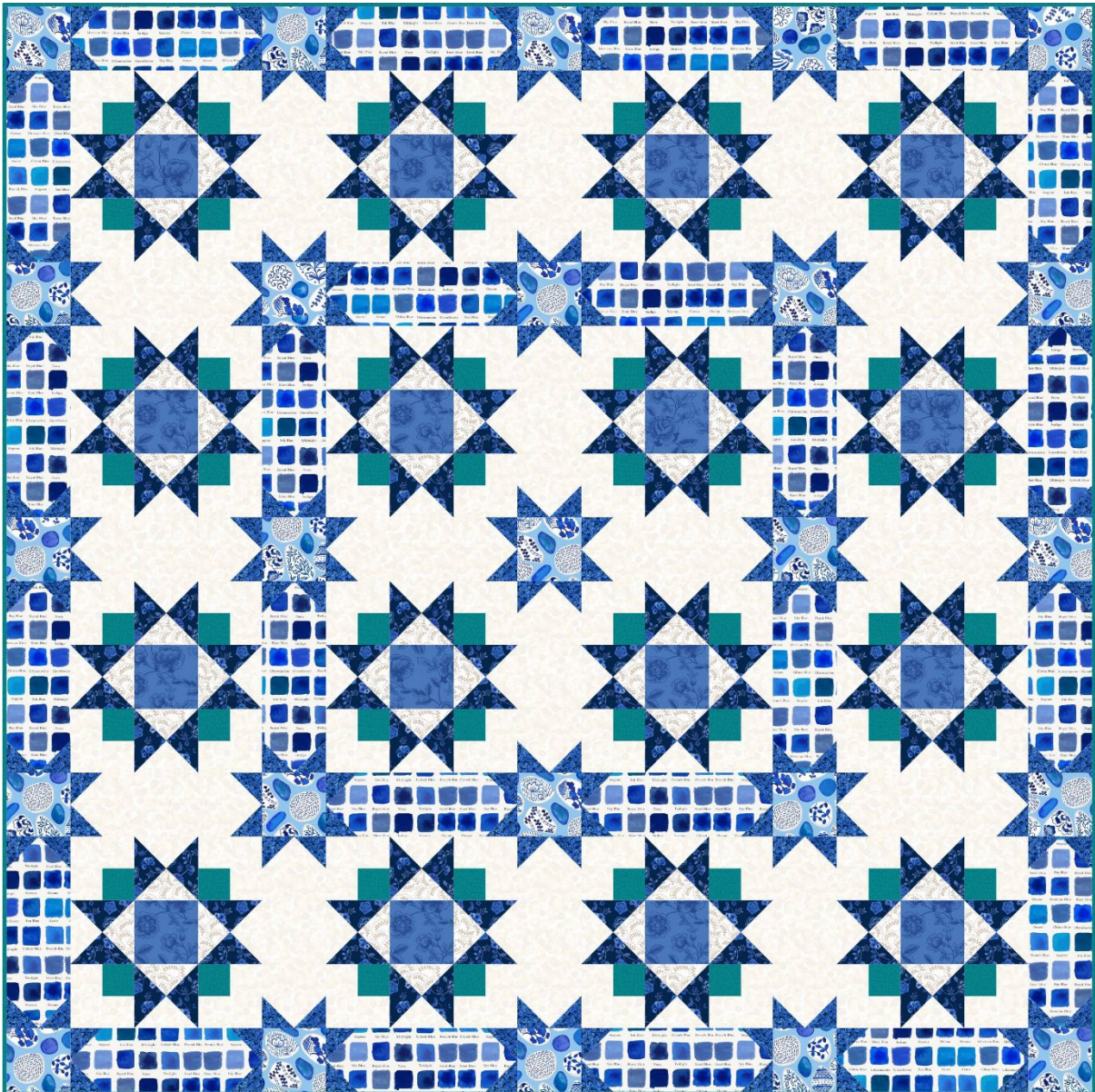


Sally Ablett © 2026



Designed and made by Sally Ablett - Quilt 2

Size of runner 68" x 68" - unfinished block size 12½" x 12½"



Main Diagram



Fabrics from Porcelain and Sea Glass collection

1. A993B - Crackle glaze - sea glass green - $\frac{3}{4}$ yd - $\frac{3}{4}$ m
2. A994A - Cream fronds - $\frac{3}{8}$ yd - 40cm
3. A995 - Ink swatches - $1\frac{1}{4}$ yd - $1\frac{1}{4}$ m
4. A996C - Inky floral trails on dark indigo - $\frac{5}{8}$ yd - 60cm
5. A997B - Rose trail on mid blue - fat $\frac{1}{4}$
6. A998B - Sea glass and pottery fragments light blue - $\frac{1}{2}$ yd - $\frac{1}{2}$ m
7. A999C - Watery swirls on dark blue - 1yd - 1m
8. BB01 - White - 2yd - 2m

Wadding and backing 75" x 75"

All measurements include $\frac{1}{4}$ " seam allowances; press each seam as you go.

Cutting

From fabric 1 cut

64 x $2\frac{1}{2}$ " x $2\frac{1}{2}$ "

From fabric 2 cut

16 x $5\frac{1}{4}$ " x $5\frac{1}{4}$ " cut in half diagonally twice - block

From fabric 3 cut

12 x $12\frac{1}{2}$ " x $4\frac{1}{2}$ " - sashing strips

12 x $4\frac{1}{2}$ " x $12\frac{1}{2}$ " - sashing strips

From fabric 4 cut

32 x $5\frac{1}{4}$ " x $5\frac{1}{4}$ " cut in half diagonally twice – block

From fabric 5 cut

16 x $4\frac{1}{2}$ " x $4\frac{1}{2}$ " - block

From fabric 6 cut

25 x $4\frac{1}{2}$ " x $4\frac{1}{2}$ " - sashing squares

From fabric 7 cut

160 x $2\frac{1}{2}$ " x $2\frac{1}{2}$ " - for sashing strips

From fabric 8 cut

16 x $4\frac{1}{2}$ " x $12\frac{1}{2}$ " - sashing strips

64 x 2½" x 2½"

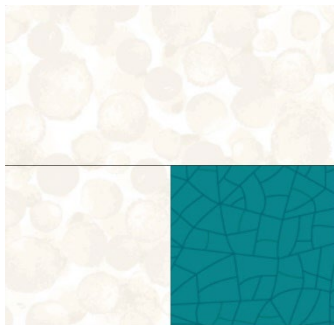
64 x 2½" x 4½"

16 x 5¼" x 5¼" cut in half diagonally twice – block

Making up the block



Lay out all the fabric pieces for the block. Start with the corner squares. Sew the two small squares together and then add the strip 2½" x 4½" to make the square.



Now stitch two sets of the small triangle together and then sew them together to make a square. Lay out all the pieces and stitch in rows. Last sew the three rows together to complete the block. You need 16 in total.

Sashing strips

On fabric 7 draw a diagonal line. Place this onto your strips of fabric 3 and 8 as in the diagram.



Sew on the out edge of the pencil line. Next cut a 1/4" on the outside of the square.



Do the same as before.



You need to do the same to the other end.



You need 24 in total – 12 horizontally and 12 vertically with fabric 3 and 16 with fabric 8.

Making up the quilt

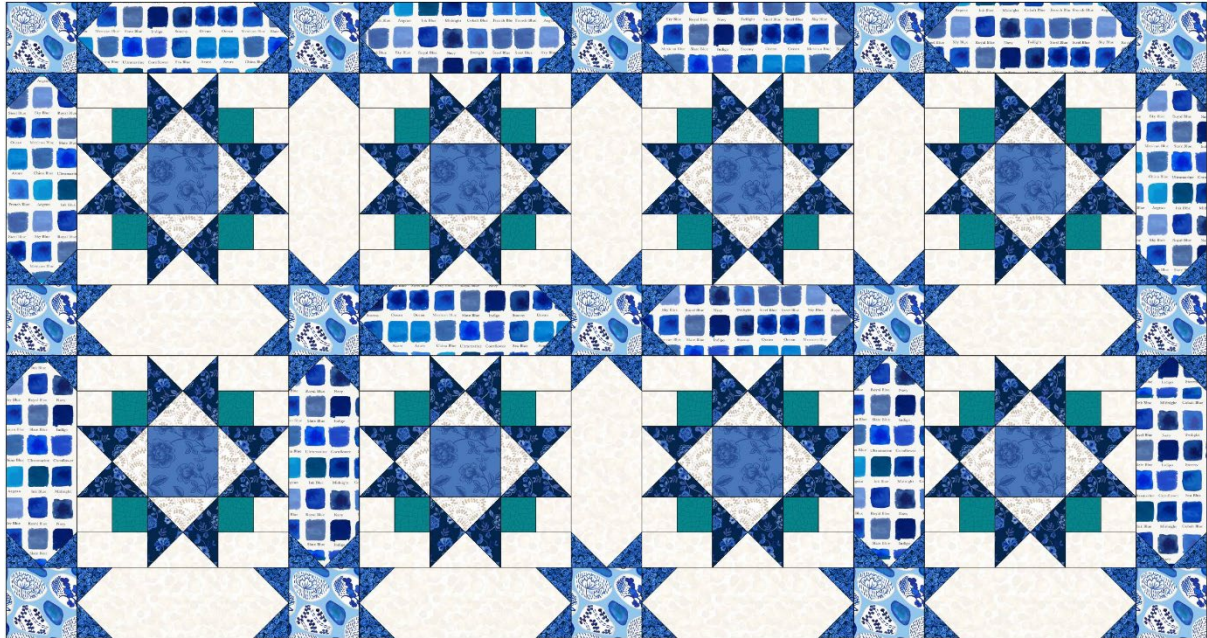
Lay out all your blocks, squares and sashing pieces as in the main diagram.

Rows 1, 3, 5, 7 and 9 will be the squares and strips.

Rows 2, 4, 6 and 8 will be sashing strips and blocks.

Start with the top row and press your seams left on the odd numbers.

Even numbers will be to the right, this will help when sewing the rows together. Stitch the rows together to complete the quilt top.



Five of the rows on the quilt.

Quilting and binding

Sandwich the quilt top, wadding and backing together.

Quilt by hand or machine a pattern to match the quilt.

Trim the backing and wadding to size of quilt.

Binding

Use your favorite method from fabric 1 for binding the quilt.

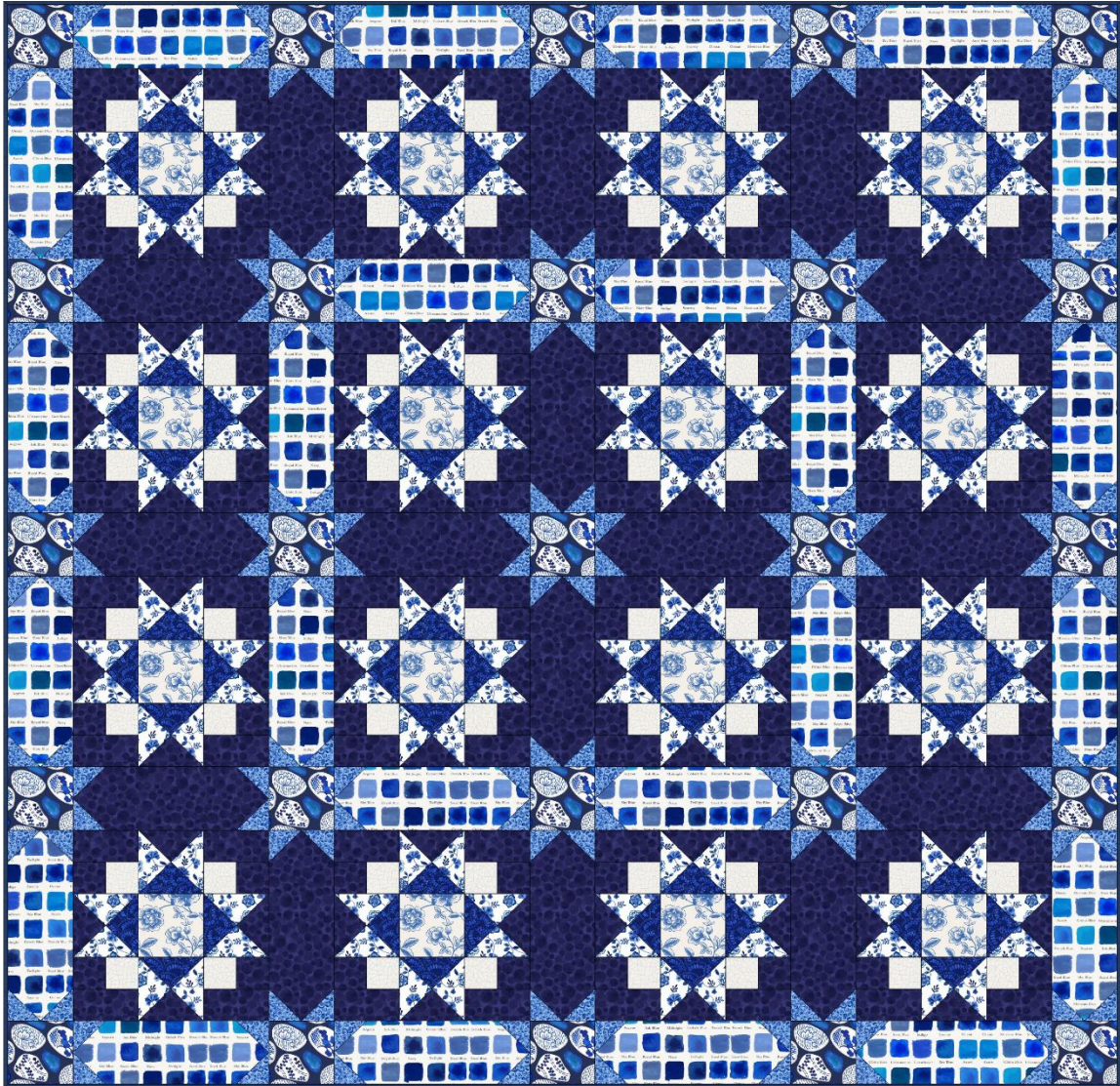


Sally Ablett © 2026



Designed and made by Sally Ablett - Quilt 3

Size of runner 68" x 68" - unfinished block size 12½" x 12½"



Main Diagram



Fabrics from Porcelain and Sea Glass collection

1. A993A - Crackle glaze - putty - $\frac{3}{4}$ yd - $\frac{3}{4}$ m
2. A994C - Dark blue fronds - $\frac{3}{8}$ yd - 40cm
3. A995 - Ink swatches - $1\frac{1}{4}$ yd - $1\frac{1}{4}$ m
4. A996A - Inky floral trails on cream - $\frac{5}{8}$ yd - 60cm
5. A997A - Rose trail on cream - fat $\frac{1}{4}$
6. A998C - Sea glass and pottery fragments dark blue - $\frac{1}{2}$ yd - $\frac{1}{2}$ m
7. A999B - Watery swirls on light blue - 1yd - 1m
8. BB028 - Navy blue - 2yd - 2m

Wadding and backing 75" x 75"

All measurements include $\frac{1}{4}$ " seam allowances; press each seam as you go.

Cutting

From fabric 1 cut

64 x $2\frac{1}{2}$ " x $2\frac{1}{2}$ "

From fabric 2 cut

16 x $5\frac{1}{4}$ " x $5\frac{1}{4}$ " cut in half diagonally twice - block

From fabric 3 cut

12 x $12\frac{1}{2}$ " x $4\frac{1}{2}$ " - sashing strips

12 x $4\frac{1}{2}$ " x $12\frac{1}{2}$ " - sashing strips

From fabric 4 cut

32 x $5\frac{1}{4}$ " x $5\frac{1}{4}$ " cut in half diagonally twice – block

From fabric 5 cut

16 x $4\frac{1}{2}$ " x $4\frac{1}{2}$ " - block

From fabric 6 cut

25 x $4\frac{1}{2}$ " x $4\frac{1}{2}$ " - sashing squares

From fabric 7 cut

160 x $2\frac{1}{2}$ " x $2\frac{1}{2}$ " - for sashing strips

From fabric 8 cut

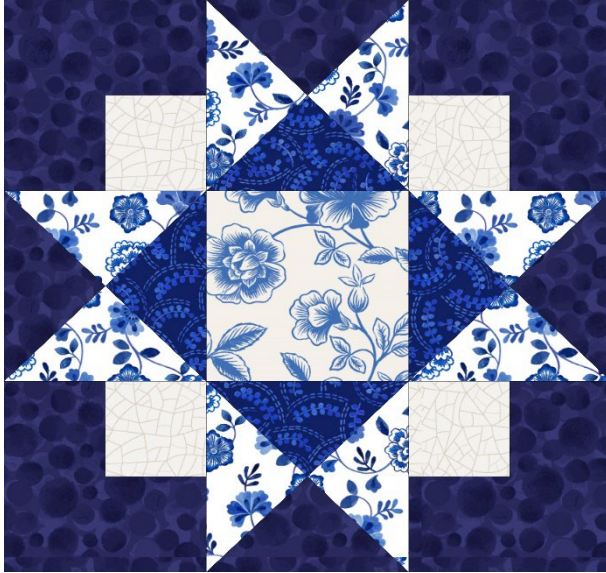
16 x $4\frac{1}{2}$ " x $12\frac{1}{2}$ " - sashing strips

64 x 2½" x 2½"

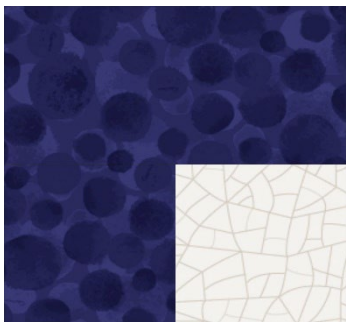
64 x 2½" x 4½"

16 x 5¼" x 5¼" cut in half diagonally twice – block

Making up the block



Lay out all the fabric pieces for the block. Start with the corner squares. Sew the two small squares together and then add the strip 2½" x 4½" to make the square.



Now stitch two sets of the small triangle together and then sew them together to make a square. Lay out all the pieces and stitch in rows. Last sew the three rows together to complete the block. You need 16 in total.

Sashing strips

On fabric 7 draw a diagonal line. Place this onto your strips of fabric 3 and 8 as in the diagram.



Sew on the out edge of the pencil line. Next cut a ¼" on the outside of the square.



Do the same as before.



You need to do the same to the other end.



You need 24 in total – 12 horizontally and 12 vertically - with fabric 3 and 16 with fabric 8.

Making up the quilt

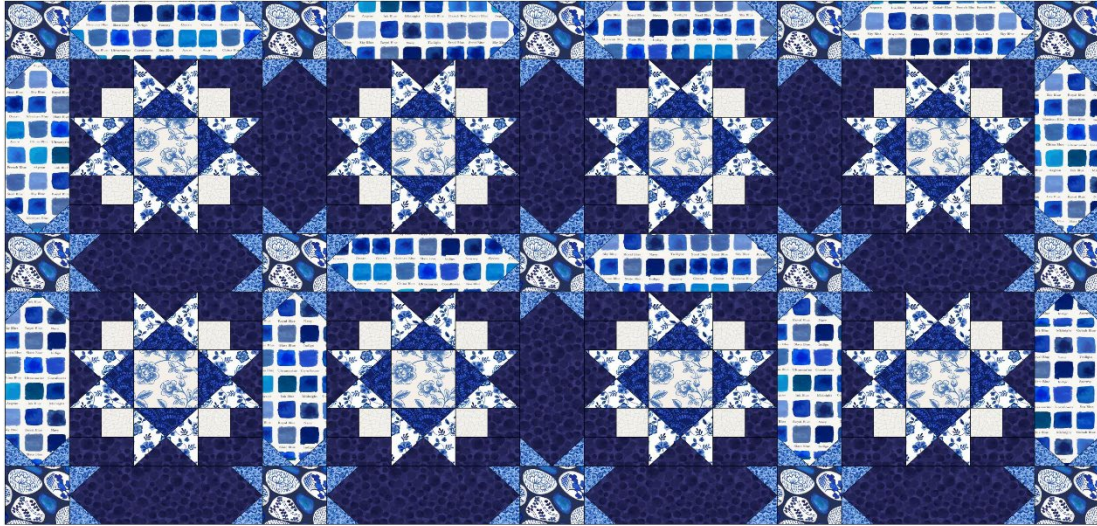
Lay out all your blocks, squares and sashing pieces as in the main diagram.

Rows 1, 3, 5, 7 and 9 will be the squares and strips.

Rows 2, 4, 6 and 8 will be sashing strips and blocks.

Start with the top row and press your seams left on the odd numbers.

Even numbers will be to the right this will help when sewing the rows together. Stitch the rows together to complete the quilt top.



Five of the rows on the quilt.

Quilting and binding

Sandwich the quilt top, wadding and backing together.

Quilt by hand or machine a pattern to match the quilt.

Trim the backing and wadding to size of quilt.

Binding

Use your favorite method from fabric 1 for binding the quilt.



A993.A
Fabric 1



A994.C
Fabric 2



A995
Fabric 3



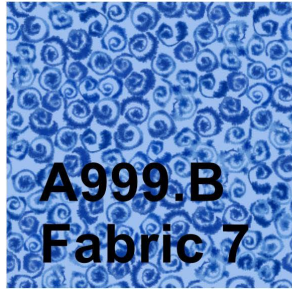
A996.A
Fabric 4



A997.A
Fabric 5



A998.C
Fabric 6



A999.B
Fabric 7



BB028
Fabric 8

Sally Ablett © 2026