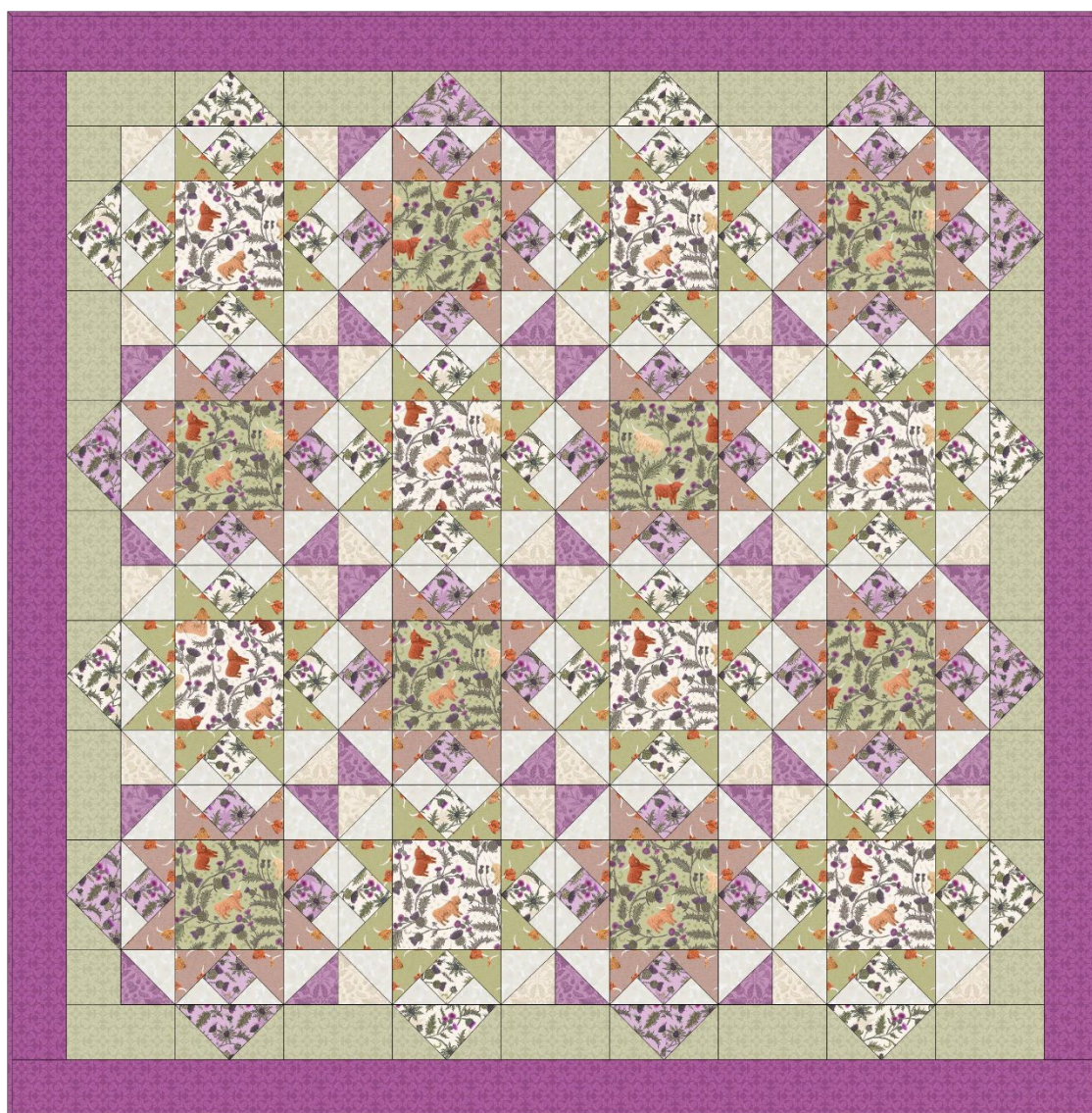




Designed and made by Sally Ablett - Quilt 1

Size of runner 60" x 60" - unfinished block size 12½" x 12½" - 3½" x 6½"



Main Diagram



Fabrics from Highlands collection

Requirements

1. A873.A - Highland cow and thistle on light cream - $\frac{3}{8}$ yd - 40cm
2. A873.B - Highland cow and thistle on soft apple - $\frac{3}{8}$ yd - 40cm
3. A874.B - Thistle on sage green - $1\frac{3}{4}$ yd - 1.60m
4. A874.C - Thistle on highland purple - $1\frac{1}{4}$ yd - 1.1 $\frac{1}{4}$ m
5. A875.A - Bee thistle on light cream - $\frac{3}{4}$ yd - 70cm
6. A875.C - Bee thistle on light heather - $\frac{3}{4}$ yd - 70cm
7. A876.B - Highlands cows on green - $\frac{1}{2}$ yd - $\frac{1}{2}$ m
8. A876.C - Highlands cows on light brown - $\frac{1}{2}$ yd - $\frac{1}{2}$ m
9. A877.A - Highlands on cream - fat $\frac{1}{4}$
10. A877.B - Highlands on warm heather - fat $\frac{1}{4}$
11. BB02 - Cream - 1yd - 1m

Wadding and backing 66" x 66"

All measurements include $\frac{1}{4}$ " seam allowances; press each seam as you go.

You need to join your fabric to get the length for the border strips.

Cutting

From fabric 1 cut

8 x $6\frac{1}{2}$ " x $6\frac{1}{2}$ " - Block 1

From fabric 2 cut

8 x $6\frac{1}{2}$ " x $6\frac{1}{2}$ " - block 2

From fabric 3 cut

16 x $3\frac{1}{2}$ " x $6\frac{1}{2}$ " - inner border

16 x $3\frac{7}{8}$ " x $3\frac{7}{8}$ " cut in half diagonally once - inner border

4 x $3\frac{1}{2}$ " x $3\frac{1}{2}$ " - inner border

From fabric 4 cut

2 x $3\frac{1}{2}$ " x $60\frac{1}{2}$ " - outer border top & bottom

2 x $3\frac{1}{2}$ " x $54\frac{1}{2}$ " - outer border sides

From fabric 5 cut

2 x $7\frac{1}{4}$ " x $7\frac{1}{4}$ " cut in half diagonally twice - inner border



32 x 2⁵/₈" x 2⁵/₈" - block 1

From fabric 6 cut

2 x 7¹/₄" x 7¹/₄" cut in half diagonally twice - inner border

32 x 2⁵/₈" x 2⁵/₈" - block 2

From fabric 7 cut

32 x 3⁷/₈" x 3⁷/₈" cut in half diagonally once - block 1

From fabric 8 cut

32 x 3⁷/₈" x 3⁷/₈" cut in half diagonally once - block 2

From fabric 9 cut

16 x 3⁷/₈" x 3⁷/₈" cut in half diagonally once - block 1

From fabric 10

3⁷/₈" x 3⁷/₈" cut in half diagonally once - block 2

From fabric 11 cut

32 x 4¹/₄" x 4¹/₄" cut in half diagonally twice - for both blocks

32 x 3⁷/₈" x 3⁷/₈" cut in half diagonally once - for both blocks

Making up the blocks



Block 1 diagram



Block diagram 2

Both blocks are made up in the same way. Lay out the fabric pieces for block 1. Start with sewing the two small triangles to each side of the square. So, triangle 2 to the square, press and then triangle 3 to your

work. Next stitch a large triangle number 4 to your work and adding the last triangle to complete the block.



32 blocks in total.

Stitching the corner squares by sewing the two small triangles together to make a square.

Next lay out all the block pieces and sew in rows and then your rows together for the block. 8 blocks in total for block 1.

Block 2 is made up in the same just different colours.

Quilt center.

Lay out all the blocks as in the main diagram. Stitch in rows and then sew your rows together to complete the quilt center.

Inner border



Border diagram. Sew a small triangle of number 2 the larger triangle, press and then number 3 triangle to complete the block. You will have two colour ways.

Lay out the blocks and the $3\frac{1}{2}$ " x $6\frac{1}{2}$ " for the top and bottom and sew together. For the sides add the square to each end.

Sew the sides to the quilt, press and then the top and bottom.

Outer border

Take the sides strips and sew to the quilt, press and then the top and bottom to complete the quilt top.

Quilting and binding

Sandwich the quilt top, wadding and backing together.

Quilt by hand or machine a pattern to match the quilt.

Maybe flowers or leaves. Trim the backing and wadding to size of quilt.

Binding

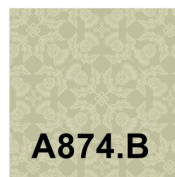
Use your favorite method from fabric 4 for binding the quilt.



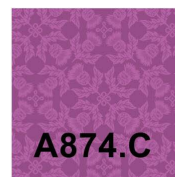
Fabric 1



Fabric 2



Fabric 3



Fabric 4



Fabric 6



Fabric 7



Fabric 7



Fabric 8



Fabric 9



Fabric 10



Fabric 11

A873.A

A873.B

A874.B

A874.C

A875.A

A875.C

A876.B

A876.C

A877.A

A877.B

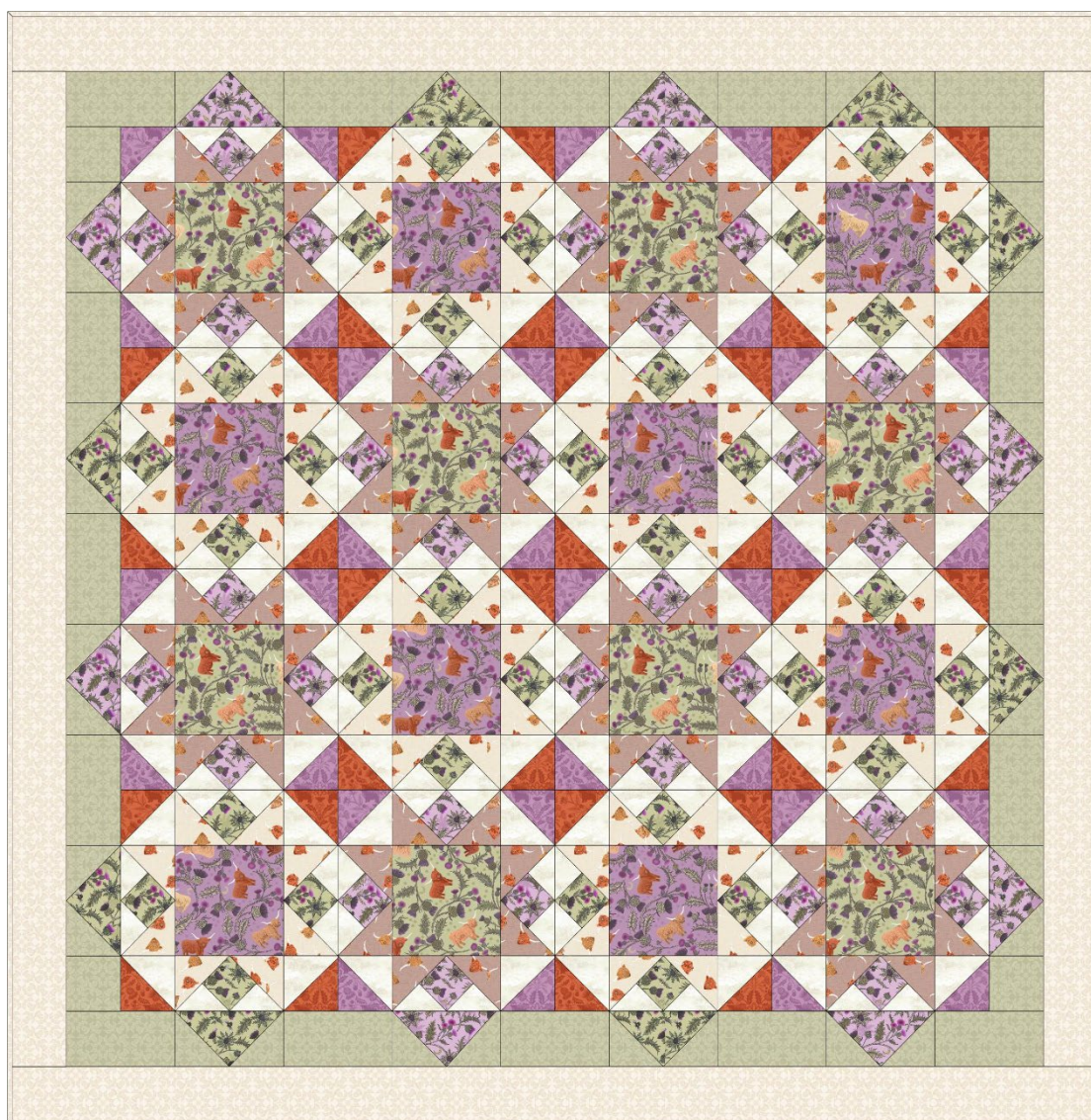
BB02

Sally Ablett © 2025



Designed and made by Sally Ablett - Quilt 2

Size of runner 60" x 60" - unfinished block size 12½" x 12½" - 3½" x 6½"



Main Diagram



Fabrics from Highlands collection

Requirements

1. A873.B - Highland cow and thistle on soft apple - $\frac{3}{8}$ yd - 40cm
2. A873.C - Highland cow and thistle on heather - $\frac{3}{8}$ yd - 40cm
3. A874.B - Thistle on sage green - $1\frac{3}{4}$ yd - 1.60m
4. A874.A - Thistle on light cream - $1\frac{1}{4}$ yd - $1\frac{1}{4}$ m
5. A875.B - Bee thistle on soft green - $\frac{3}{4}$ yd - 70cm
6. A875.C - Bee thistle on light heather - $\frac{3}{4}$ yd - 70cm
7. A876.A - Highlands cows on light cream - $\frac{1}{2}$ yd - $\frac{1}{2}$ m
8. A876.C - Highlands cows on light brown - $\frac{1}{2}$ yd - $\frac{1}{2}$ m
9. A877.B - Highlands on warm heather - fat $\frac{1}{4}$
10. A877.C - Highlands on highland orange - fat $\frac{1}{4}$
11. D1 - Cream dreams - 1yd - 1m

Wadding and backing 66" x 66"

All measurements include $\frac{1}{4}$ " seam allowances; press each seam as you go.

You need to join your fabric to get the length for the border strips.

Cutting

From fabric 1 cut

8 x $6\frac{1}{2}$ " x $6\frac{1}{2}$ " - Block 1

From fabric 2 cut

8 x $6\frac{1}{2}$ " x $6\frac{1}{2}$ " - block 2

From fabric 3 cut

16 x $3\frac{1}{2}$ " x $6\frac{1}{2}$ " - inner border

16 x $3\frac{7}{8}$ " x $3\frac{7}{8}$ " cut in half diagonally once - inner border

4 x $3\frac{1}{2}$ " x $3\frac{1}{2}$ " - inner border

From fabric 4 cut

2 x $3\frac{1}{2}$ " x $60\frac{1}{2}$ " - outer border top & bottom

2 x $3\frac{1}{2}$ " x $54\frac{1}{2}$ " - outer border sides

From fabric 5 cut

2 x $7\frac{1}{4}$ " x $7\frac{1}{4}$ " cut in half diagonally twice - inner border



32 x 2⁵/₈" x 2⁵/₈" - block 1

From fabric 6 cut

2 x 7¹/₄" x 7¹/₄" cut in half diagonally twice - inner border

32 x 2⁵/₈" x 2⁵/₈" - block 2

From fabric 7 cut

32 x 3⁷/₈" x 3⁷/₈" cut in half diagonally once - block 1

From fabric 8 cut

32 x 3⁷/₈" x 3⁷/₈" cut in half diagonally once - block 2

From fabric 9 cut

16 x 3⁷/₈" x 3⁷/₈" cut in half diagonally once - block 1

From fabric 10

3⁷/₈" x 3⁷/₈" cut in half diagonally once - block 2

From fabric 11 cut

32 x 4¹/₄" x 4¹/₄" cut in half diagonally twice - for both blocks

32 x 3⁷/₈" x 3⁷/₈" cut in half diagonally once - for both blocks

Making up the blocks



Block 1 diagram



Block diagram 2

Both blocks are made up in the same way. Lay out the fabric pieces for block 1. Start with sewing the two small triangles to each side of the square. So, triangle 2 to the square, press and then triangle 3 to your

work. Next stitch a large triangle number 4 to your work and adding the last triangle to complete the block.



32 blocks in total.

Stitching the corner squares by sewing the two small triangles together to make a square.

Next lay out all the block pieces and sew in rows and then your rows together for the block. 8 blocks in total for block 1.

Block 2 is made up in the same just different colours.

Quilt center.

Lay out all the blocks as in the main diagram. Stitch in rows and then sew your rows together to complete the quilt center.

Inner border



Border diagram. Sew a small triangle of number 2 the larger triangle, press and then number 3 triangle to complete the block. You will have two colour ways.

Lay out the blocks and the $3\frac{1}{2}$ " x $6\frac{1}{2}$ " for the top and bottom and sew together. For the sides add the square to each end.

Sew the sides to the quilt, press and then the top and bottom.

Outer border

Take the sides strips and sew to the quilt, press and then the top and bottom to complete the quilt top.

Quilting and binding

Sandwich the quilt top, wadding and backing together.

Quilt by hand or machine a pattern to match the quilt.

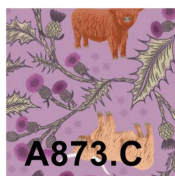
Maybe flowers or leaves. Trim the backing and wadding to size of quilt.

Binding

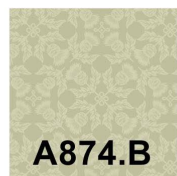
Use your favorite method from fabric 4 for binding the quilt.



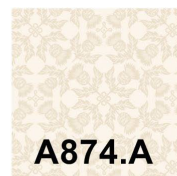
Fabric 1



Fabric 2



Fabric 3



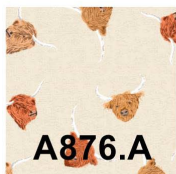
Fabric 4



Fabric 6



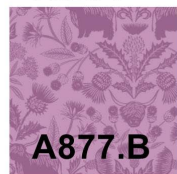
Fabric 7



Fabric 7



Fabric 8



Fabric 9



Fabric 10



Fabric 11

Sally Ablett © 2025