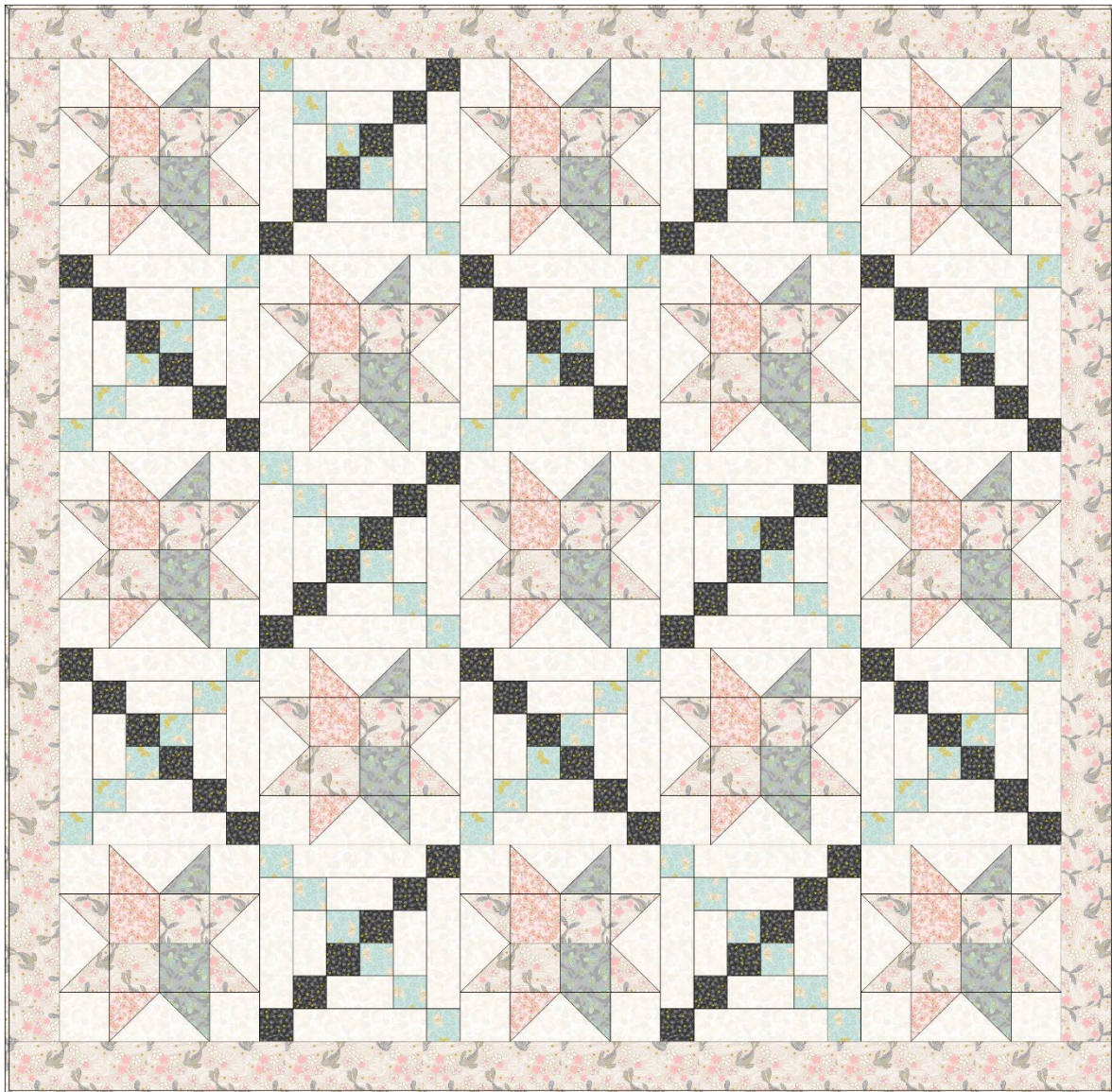




Designed and made by Sally Ablett - Quilt 1 - Size of Quilt 66" x 66"  
unfinished block size 12½" x 12½"



**Main Diagram**

## **Fabrics from Sakura with gold metallic collection**

### **Requirements**

1. A919.A - Sakura koi on warm neutral -  $1\frac{3}{4}$ yd -  $1\frac{3}{4}$ m
2. A920.C - Tiny blossom on charcoal -  $\frac{3}{8}$ yd - 40cm
3. A921.B - Sakura butterflies on light duck egg -  $\frac{3}{8}$ yd - 40cm
4. A922.A - Swimming koi on grey -  $\frac{3}{8}$ yd - 40cm
5. A923.B - Cherry blossom on light pink -  $\frac{3}{8}$ yd - 40cm
6. BB01 - White -  $2\frac{3}{8}$ yd -  $2\frac{1}{4}$ m

Wadding and backing 72" x 72"

**All measurements include  $\frac{1}{4}$ " seam allowances; press each seam as you go.**

**You need to join your fabric to get the length for the border strips.**

### **Cutting**

#### **From fabric 1 cut**

2 x  $3\frac{1}{2}$ " x  $66\frac{1}{2}$ " - border top and bottom

2 x  $3\frac{1}{2}$ " x  $60\frac{1}{2}$ " - border sides

26 x  $3\frac{7}{8}$ " x  $3\frac{7}{8}$ " cut in half diagonally once - block 1

26 x  $3\frac{1}{2}$ " x  $3\frac{1}{2}$ " - block 1

#### **From each of the fabrics 2 & 3 cut**

72 x  $2\frac{1}{2}$ " x  $2\frac{1}{2}$ " - blocks 2 A & 2 B

#### **From each of the fabric 4 & 5 cut**

13 x  $3\frac{7}{8}$ " x  $3\frac{7}{8}$ " cut in half diagonally once - block 1

13 x  $3\frac{7}{8}$ " x  $3\frac{7}{8}$ " cut in half diagonally once - block 1

#### **From fabric 6 cut**

13 x  $7\frac{1}{4}$ " x  $7\frac{1}{4}$ " cut in half diagram twice - block 1

52 x  $3\frac{1}{2}$ " x  $3\frac{1}{2}$ " - block 1

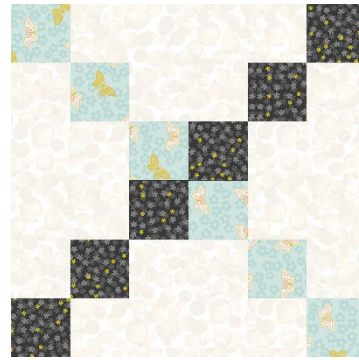
48 x  $2\frac{1}{2}$ " x  $8\frac{1}{2}$ " - block 2 A & 2 B

48 x  $2\frac{1}{2}$ " x  $4\frac{1}{2}$ " - block 2 A & 2 B

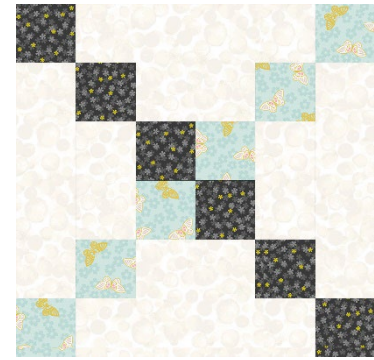
### **Making up the blocks**



**Block 1**



**Block 2 A**



**Block 2 B**

### Block 1

Lay out your fabric pieces for the block. Have put numbers on the blocks so you can follow the order in which to sew.



Make up the **Flying Geese** block by sewing a small triangle number 2 on the long side to the short side of the larger triangle number 1. Do the same to the other side with number 3.



Center square. Stitch the top rows together and the bottom two together. Now sew them to complete the block.

Lay out all the pieces for the block. Stitch in rows and then sew your rows together to complete the the block. 13 blocks in total.

### Block 2 A & 2 B

You will have 6 blocks going one way and 6 the other way. So look at the placement of the fabrics for your blocks.

Start with center by sewing the small squares together to make a bigger square. Next add the 2½" x 4½" strips of fabric 6 to the sides. On the

other two add a square at each end and sew to the block. Do the same to the outer strips and squares as before to complete the block.

### **Making up the quilt top**

Lay out the blocks as in the main diagram. Sew in rows, press the seams in the opposite way each time. This will help when stitching the blocks together. Sew your rows together to complete the quilt top.

### **Quilting and binding**

Sandwich the quilt top, wadding and backing together.

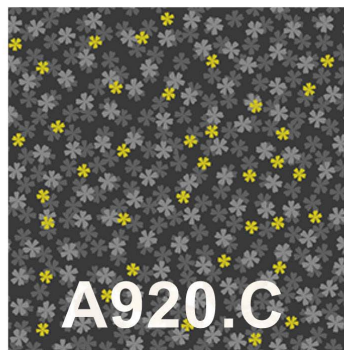
Quilt by hand or machine as desired. Trim the backing and wadding to size of quilt.

Use your favorite method from fabric 1 to bind the quilt.



**A919.A**

**Fabric 1**



**A920.C**

**Fabric 2**



**A921.B**

**Fabric 3**



**A922.A**

**Fabric 4**



**A923.B**

**Fabric 5**

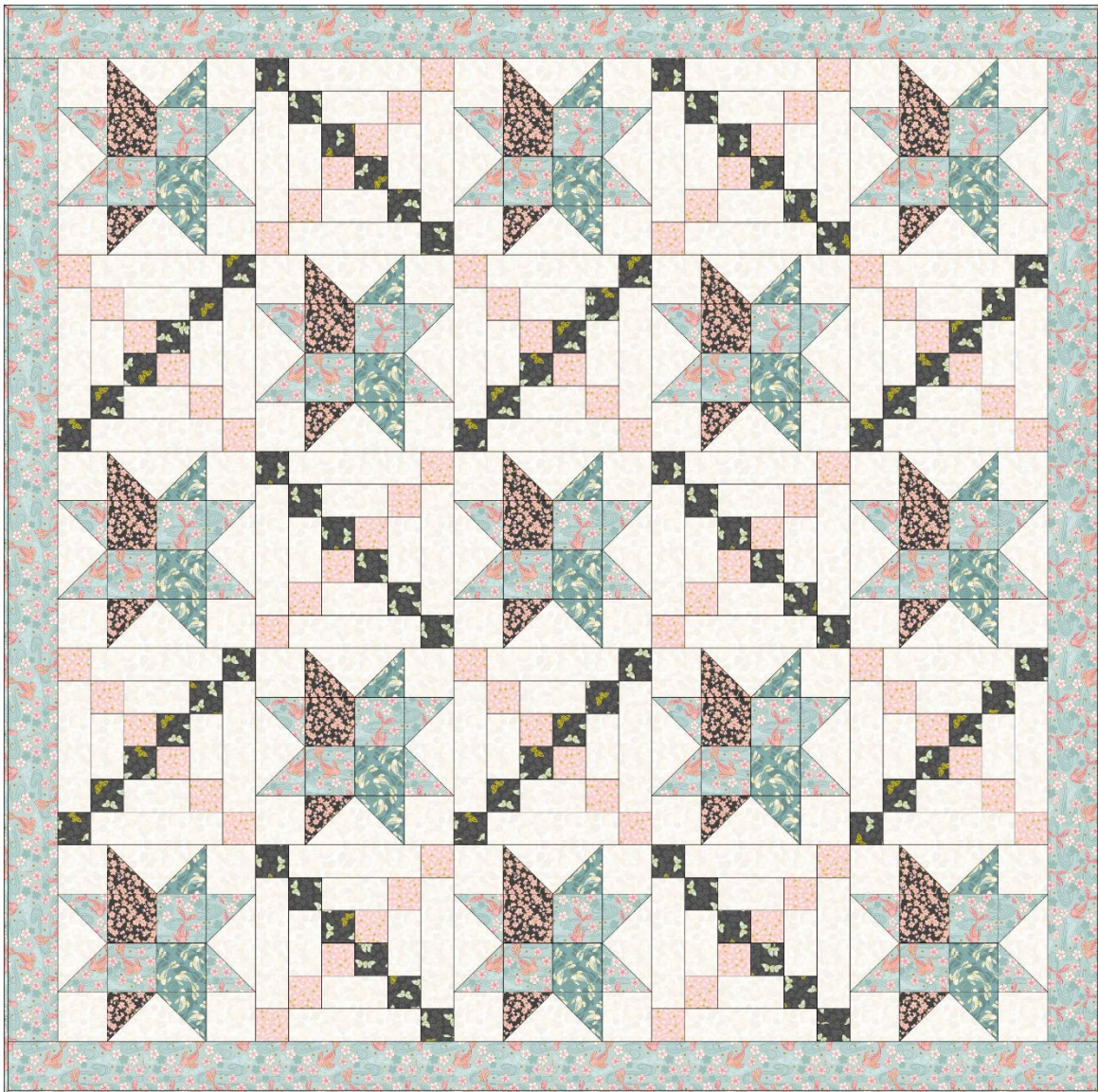


**BB01**

**Fabric 6**



Designed and made by Sally Ablett - Quilt 2 - Size of Quilt 66" x 66"  
unfinished block size 12½" x 12½"



**Main Diagram**

## **Fabrics from Sakura with gold metallic collection**

### **Requirements**

1. A919.B - Sakura koi on eau de nil -  $1\frac{3}{4}$ yd -  $1\frac{3}{4}$ m
2. A920.A - Tiny blossom on pink -  $\frac{3}{8}$ yd - 40cm
3. A921.C - Sakura butterflies on charcoal -  $\frac{3}{8}$ yd - 40cm
4. A922.C - Swimming koi on pond blue -  $\frac{3}{8}$ yd - 40cm
5. A923.C - Cherry blossom on charcoal -  $\frac{3}{8}$ yd - 40cm
6. BB01 - White -  $2\frac{3}{8}$ yd -  $2\frac{1}{4}$ m

Wadding and backing 72" x 72"

**All measurements include  $\frac{1}{4}$ " seam allowances; press each seam as you go.**

**You need to join your fabric to get the length for the border strips.**

### **Cutting**

#### **From fabric 1 cut**

2 x  $3\frac{1}{2}$ " x  $66\frac{1}{2}$ " - border top and bottom

2 x  $3\frac{1}{2}$ " x  $60\frac{1}{2}$ " - border sides

26 x  $3\frac{7}{8}$ " x  $3\frac{7}{8}$ " cut in half diagonally once - block 1

26 x  $3\frac{1}{2}$ " x  $3\frac{1}{2}$ " - block 1

#### **From each of the fabrics 2 & 3 cut**

72 x  $2\frac{1}{2}$ " x  $2\frac{1}{2}$ " - blocks 2 A & 2 B

#### **From each of the fabric 4 & 5 cut**

13 x  $3\frac{7}{8}$ " x  $3\frac{7}{8}$ " cut in half diagonally once - block 1

13 x  $3\frac{7}{8}$ " x  $3\frac{7}{8}$ " cut in half diagonally once - block 1

#### **From fabric 6 cut**

13 x  $7\frac{1}{4}$ " x  $7\frac{1}{4}$ " cut in half diagram twice - block 1

52 x  $3\frac{1}{2}$ " x  $3\frac{1}{2}$ " - block 1

48 x  $2\frac{1}{2}$ " x  $8\frac{1}{2}$ " - block 2 A & 2 B

48 x  $2\frac{1}{2}$ " x  $4\frac{1}{2}$ " - block 2 A & 2 B

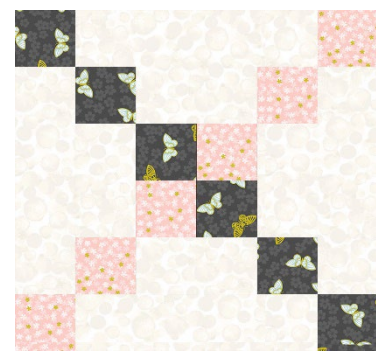
### **Making up the blocks**



**Block 1**



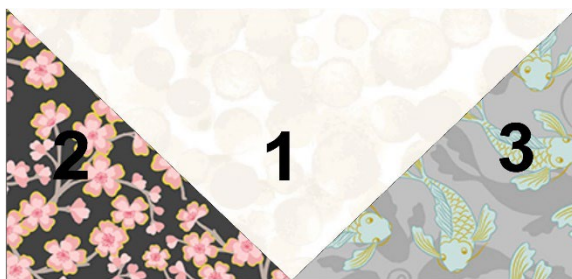
**Block 2 A**



**Block 2 B**

**Block 1**

Lay out your fabric pieces for the block. Have put numbers on the blocks so you can follow the order in which to sew.



Make up the **Flying Geese** block by sewing a small triangle number 2 on the long side to the short side of the larger triangle number 1. Do the same to the other side with number 3.



Center square. Stitch the top rows together and the bottom two together. Now sew them to complete the block.

Lay out all the pieces for the block. Stitch in rows and then sew your rows together to complete the block. 13 blocks in total.

### **Block 2 A & 2 B**

You will have 6 blocks going one way and 6 the other way. So look at the placement of the fabrics for your blocks.

Start with center by sewing the small squares together to make a bigger square. Next add the 2½" x 4½" strips of fabric 6 to the sides. On the

other two add a square at each end and sew to the block. Do the same to the outer strips and squares as before to complete the block.

### **Making up the quilt top**

Lay out the blocks as in the main diagram. Sew in rows, press the seams in the opposite way each time. This will help when stitching the blocks together. Sew your rows together to complete the quilt top.

### **Quilting and binding**

Sandwich the quilt top, wadding and backing together.

Quilt by hand or machine as desired. Trim the backing and wadding to size of quilt.

Use your favorite method from fabric 1 to bind the quilt.



**Fabric 1**



**Fabric 2**



**Fabric 3**



**Fabric 4**



**Fabric 5**

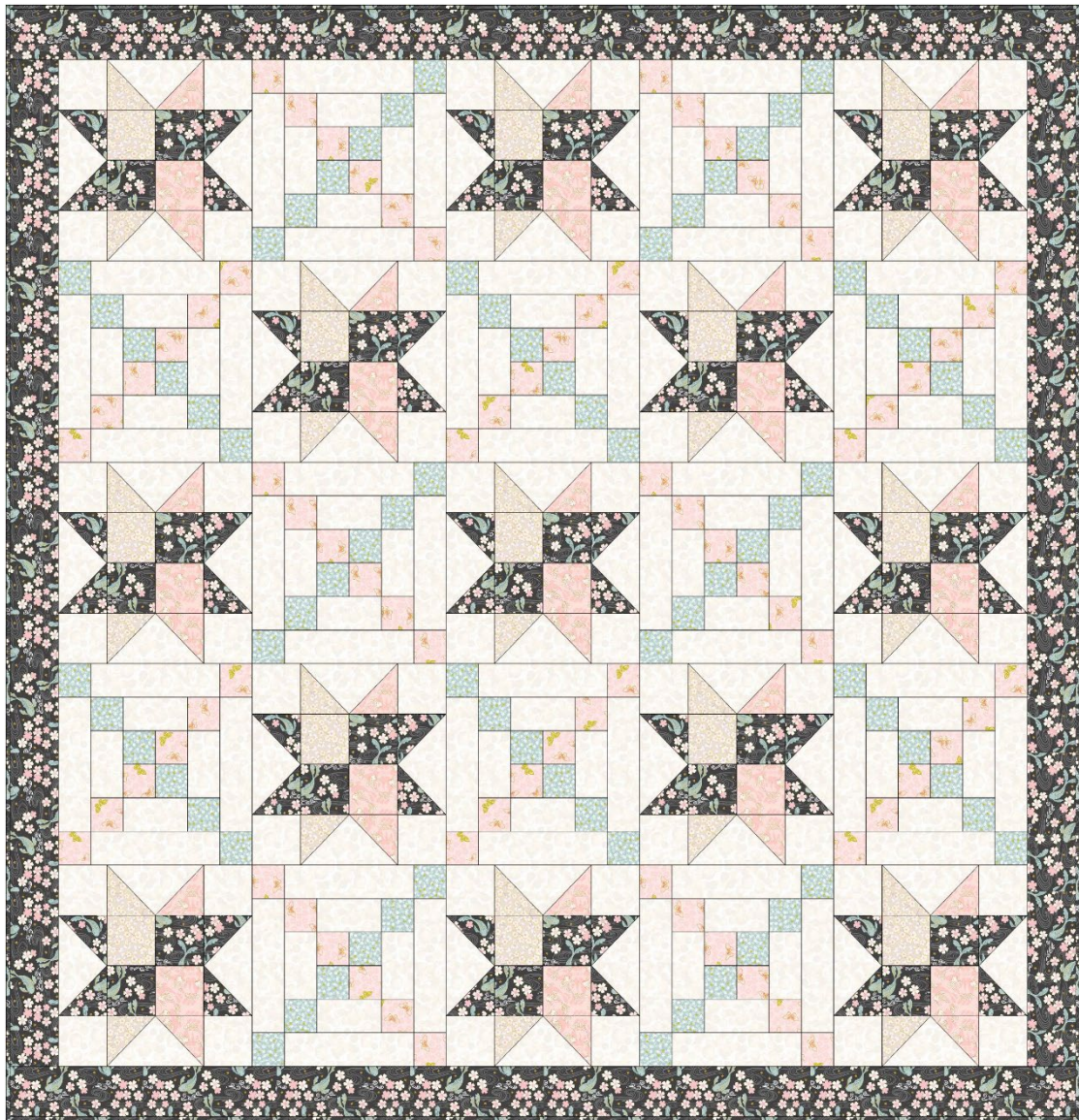


**Fabric 6**





Designed and made by Sally Ablett - Quilt 3 - Size of Quilt 66" x 66"  
unfinished block size 12½" x 12½"



**Main Diagram**

## **Fabrics from Sakura with gold metallic collection**

### **Requirements**

1. A919.C - Sakura koi on charcoal -  $1\frac{3}{4}$ yd -  $1\frac{3}{4}$ m
2. A920.B - Tiny blossom on duck egg -  $\frac{3}{8}$ yd - 40cm
3. A921.A - Sakura butterflies on pink -  $\frac{3}{8}$ yd - 40cm
4. A922.B - Swimming koi on pink -  $\frac{3}{8}$ yd - 40cm
5. A923.A - Cherry blossom on warm neutral -  $\frac{3}{8}$ yd - 40cm
6. BB01 - White -  $2\frac{3}{8}$ yd -  $2\frac{1}{4}$ m

Wadding and backing 72" x 72"

**All measurements include  $\frac{1}{4}$ " seam allowances; press each seam as you go.**

**You need to join your fabric to get the length for the border strips.**

### **Cutting**

#### **From fabric 1 cut**

2 x  $3\frac{1}{2}$ " x  $66\frac{1}{2}$ " - border top and bottom

2 x  $3\frac{1}{2}$ " x  $60\frac{1}{2}$ " - border sides

26 x  $3\frac{7}{8}$ " x  $3\frac{7}{8}$ " cut in half diagonally once - block 1

26 x  $3\frac{1}{2}$ " x  $3\frac{1}{2}$ " - block 1

#### **From each of the fabrics 2 & 3 cut**

72 x  $2\frac{1}{2}$ " x  $2\frac{1}{2}$ " - blocks 2 A & 2 B

#### **From each of the fabric 4 & 5 cut**

13 x  $3\frac{7}{8}$ " x  $3\frac{7}{8}$ " cut in half diagonally once - block 1

13 x  $3\frac{7}{8}$ " x  $3\frac{7}{8}$ " cut in half diagonally once - block 1

#### **From fabric 6 cut**

13 x  $7\frac{1}{4}$ " x  $7\frac{1}{4}$ " cut in half diagram twice - block 1

52 x  $3\frac{1}{2}$ " x  $3\frac{1}{2}$ " - block 1

48 x  $2\frac{1}{2}$ " x  $8\frac{1}{2}$ " - block 2 A & 2 B

48 x  $2\frac{1}{2}$ " x  $4\frac{1}{2}$ " - block 2 A & 2 B

### **Making up the blocks**



**Block 1**



**Block 2 A**



**Block 2 B**

**Block 1**

Lay out your fabric pieces for the block. Have put numbers on the blocks so you can follow the order in which to sew.



Make up the **Flying Geese** block by sewing a small triangle number 2 on the long side to the short side of the larger triangle number 1. Do the same to the other side with number 3.



Center square. Stitch the top rows together and the bottom two together. Now sew them to complete the block.

Lay out all the pieces for the block. Stitch in rows and then sew your rows together to complete the block. 13 blocks in total.

**Block 2 A & 2 B**

You will have 6 blocks going one way and 6 the other way. So look at the placement of the fabrics for your blocks.

Start with center by sewing the small squares together to make a bigger square. Next add the 2½" x 4½" strips of fabric 6 to the sides. On the other two add a square at each end and sew to the block. Do the same to the outer strips and squares as before to complete the block.

### **Making up the quilt top**

Lay out the blocks as in the main diagram. Sew in rows, press the seams in the opposite way each time. This will help when stitching the blocks together. Sew your rows together to complete the quilt top.

### **Quilting and binding**

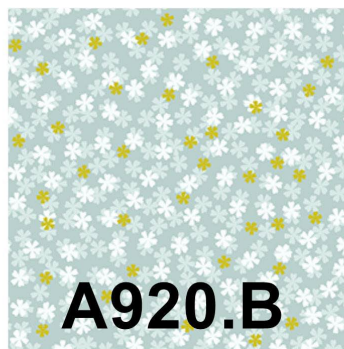
Sandwich the quilt top, wadding and backing together.

Quilt by hand or machine as desired. Trim the backing and wadding to size of quilt.

Use your favorite method from fabric 1 to bind the quilt.



**Fabric 1**



**Fabric 2**



**Fabric 3**



**Fabric 4**



**Fabric 5**



**Fabric 6**