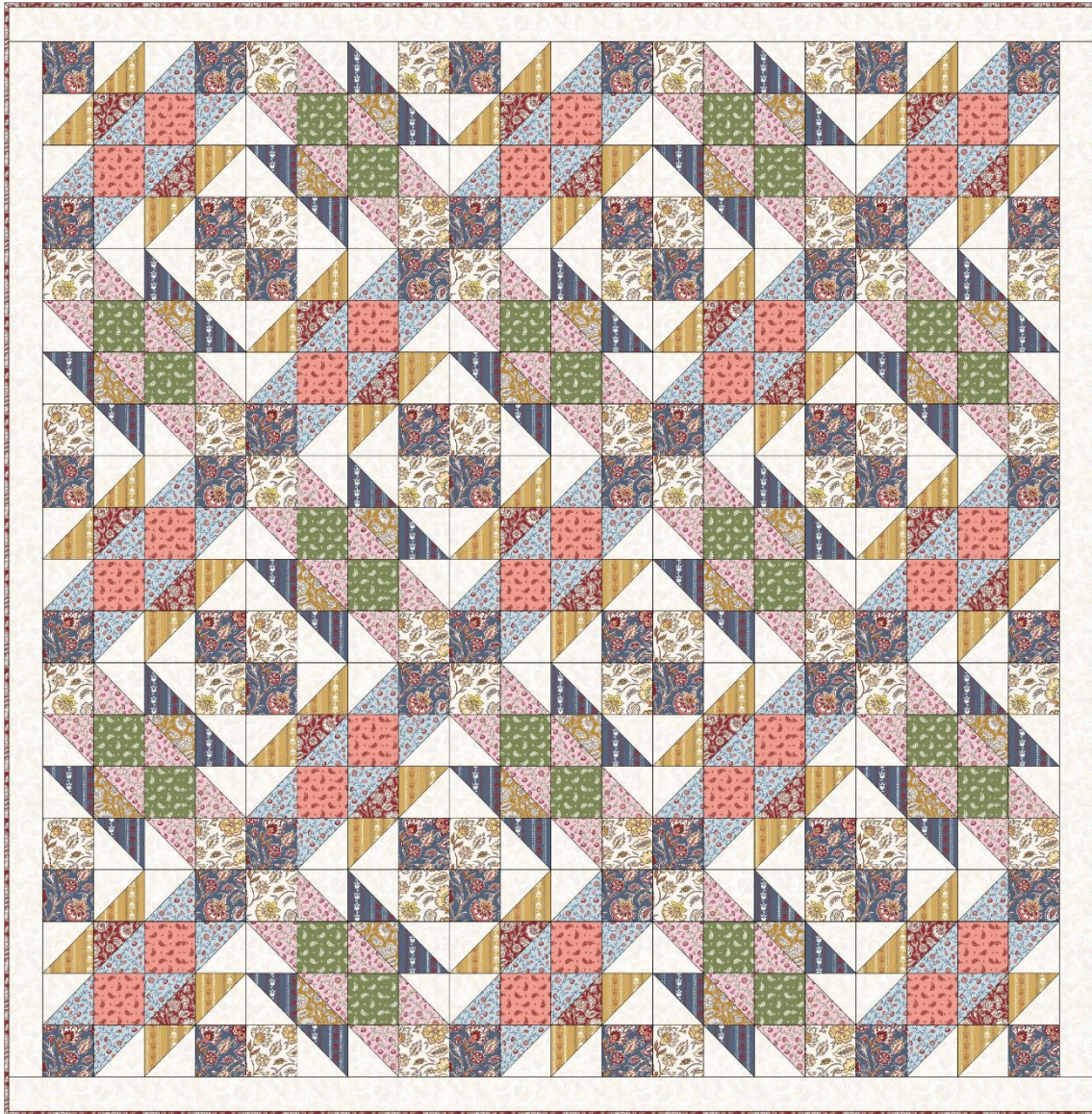




Designed and made by Sally Ablett - Quilt 1

Size of Quilt 64" x 64" - unfinished block size 12½" x 12½"



Main Diagram

## **Fabrics from Indian Summer collection**

### **Requirements**

1. SH19.C - Indian summer large floral indigo & red -  $\frac{1}{2}$ yd -  $\frac{1}{2}$ m
2. SH19.A - Indian summer large floral yellows -  $\frac{1}{2}$ yd -  $\frac{1}{2}$ m
3. SH20.A - Mini floral red -  $\frac{3}{8}$ yd - 40cm
4. SH20.B - Mini floral green - fat $\frac{1}{4}$
5. SH21.B - Climbing flowers pink -  $\frac{1}{2}$ yd -  $\frac{1}{2}$ m
6. SH21.C - Climbing flowers blue -  $\frac{1}{2}$ yd -  $\frac{1}{2}$ m
7. SH22.B - Floral stripe on yellow -  $\frac{3}{8}$ yd - 40cm
8. SH22.C - Floral stripe on indigo -  $\frac{3}{8}$ yd - 40cm
9. SH23.A - Indian summer gold floral - fat $\frac{1}{4}$
10. SH23.C - Indian summer red floral -  $\frac{1}{2}$ yd -  $\frac{1}{2}$ m
11. BB01 - White -  $1\frac{3}{4}$ yd -  $1\frac{3}{4}$ m

Wadding and backing 72" x 72"

**All measurements include  $\frac{1}{4}$ " seam allowances; press each seam as you go.**

**You need to join your fabric to get the length for the border strips.**

### **Cutting**

#### **From fabric 1 cut**

52 x  $3\frac{1}{2}$ " x  $3\frac{1}{2}$ " - Block 1

#### **From fabric 2 cut**

48 x  $3\frac{1}{2}$ " x  $3\frac{1}{2}$ " - block 2

#### **From fabric 3 cut**

26 x  $3\frac{1}{2}$ " x  $3\frac{1}{2}$ " - block 1

#### **From fabric 4 cut**

24 x  $3\frac{1}{2}$ " x  $3\frac{1}{2}$ " - block 2

#### **From fabric 5 cut**

36 x  $3\frac{7}{8}$ " x  $3\frac{7}{8}$ " cut in half diagonally once - block 2

#### **From fabric 6 cut**

39 x  $3\frac{7}{8}$ " x  $3\frac{7}{8}$ " cut in half diagonally once - block 1

#### **From fabric 7 cut**

26 x  $3\frac{7}{8}$ " x  $3\frac{7}{8}$ " cut in half diagonally once - block 1

**From fabric 8 cut**

24 x 3<sup>7</sup>/<sub>8</sub>" x 3<sup>7</sup>/<sub>8</sub>" cut in half diagonally once - block 2

**From fabric 9 cut**

12 x 3<sup>7</sup>/<sub>8</sub>" x 3<sup>7</sup>/<sub>8</sub>" cut in half diagonally once - block 2

**From fabric 10 cut**

13 x 3<sup>7</sup>/<sub>8</sub>" x 3<sup>7</sup>/<sub>8</sub>" cut in half diagonally once - block 1

**From fabric 11 cut**

2 x 2<sup>1</sup>/<sub>2</sub>" x 64<sup>1</sup>/<sub>2</sub>" - border top & bottom

2 x 2<sup>1</sup>/<sub>2</sub>" x 60<sup>1</sup>/<sub>2</sub>" - border sides

100 x 3<sup>7</sup>/<sub>8</sub>" x 3<sup>7</sup>/<sub>8</sub>" cut in half diagonally once - for both blocks

**Making up the blocks**



**Block 1**



**Block 2**

Both blocks are made up in the same way. Block 1 lay out the fabric pieces for the block. Make up all the triangle blocks.



Stitch the two triangles together to make the block.

Sew the blocks in rows and then the rows together to complete the block.  
13 in total for block 13

**Block 2.** This will be made up in the same way as block 1. This time you will make 12 in total.

### **Making up the quilt centre.**

Place the blocks out as in the main diagram. Stitch in rows, pressing the seams in opposite way each time. This will help way sewing the rows together to complete the quilt center.

### **Border**

Sew the sides to the quilt, press back. Next stitch the top and bottom to complete the quilt top.

### **Quilting and binding**

Sandwich the quilt top, wadding and backing together.

Quilt by hand or machine as desired. Trim the backing and wadding to size of quilt.

Use your favorite method from fabric 10 to bind the quilt.

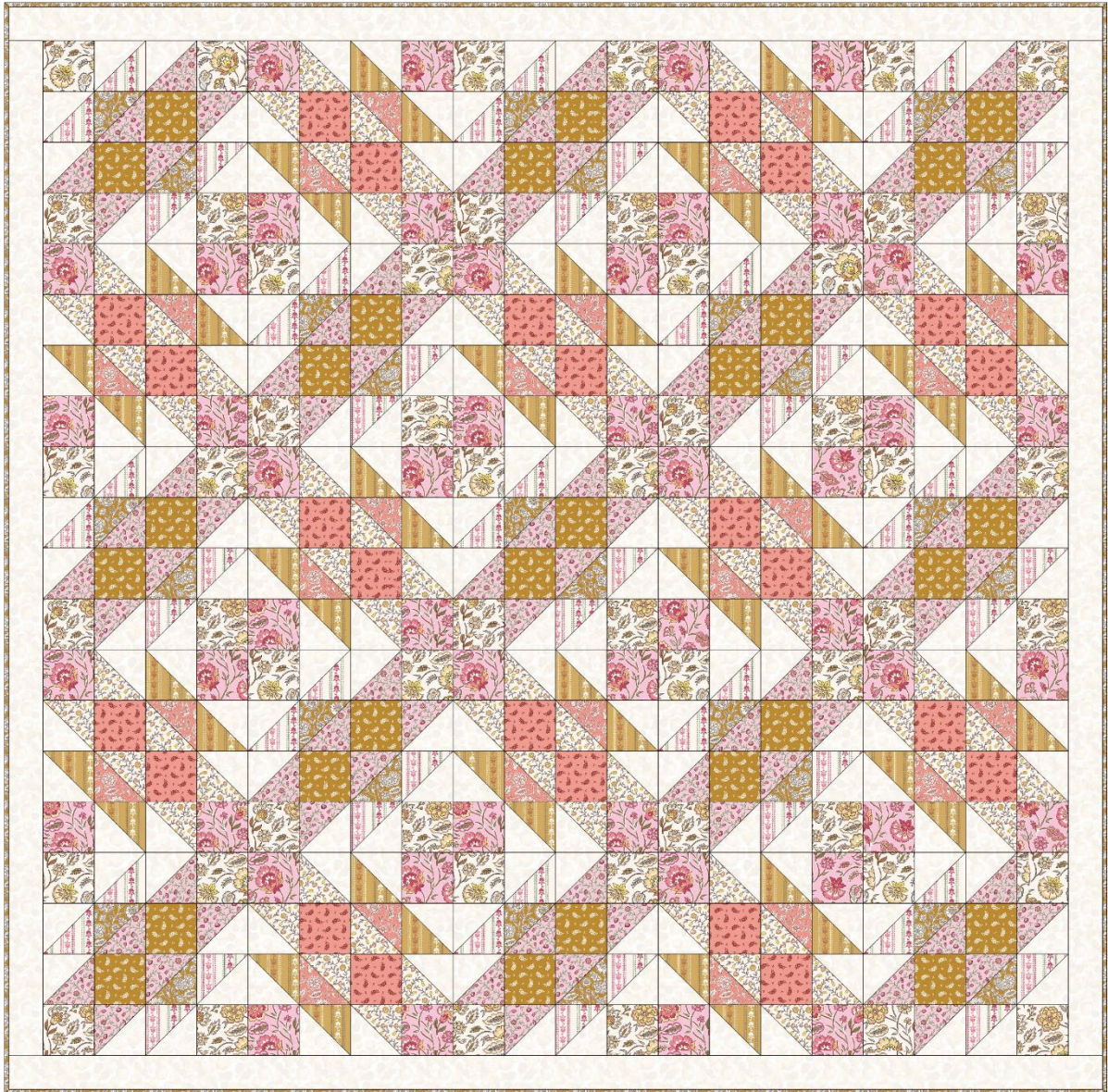


Sally Ablett © 2025



Designed and made by Sally Ablett - Quilt 2

Size of Quilt 64" x 64" - unfinished block size 12½" x 12½"



Main Diagram

## **Fabrics from Indian Summer collection**

### **Requirements**

1. SH19.A - Indian summer large floral yellows -  $\frac{1}{2}$ yd -  $\frac{1}{2}$ m
2. SH19.B - Indian summer large floral pinks -  $\frac{1}{2}$ yd
3. SH20.C - Mini floral gold -  $\frac{3}{8}$ yd - 40cm
4. SH20.A - Mini floral red - fat $\frac{1}{4}$
5. SH21.A - Climbing flowers yellow -  $\frac{1}{2}$ yd -  $\frac{1}{2}$ m
6. SH21.B - Climbing flowers pink -  $\frac{1}{2}$ yd -  $\frac{1}{2}$ m
7. SH22.A - Floral stripe on cream -  $\frac{3}{8}$ yd - 40cm
8. SH22.B - Floral stripe on yellow -  $\frac{3}{8}$ yd - 40cm
9. SH23.B - Indian summer pink floral - fat $\frac{1}{4}$
10. SH23.A - Indian summer gold floral -  $\frac{1}{2}$ yd -  $\frac{1}{2}$ m
11. BB01 - White -  $1\frac{3}{4}$ yd -  $1\frac{3}{4}$ m

Wadding and backing 72" x 72"

**All measurements include  $\frac{1}{4}$ " seam allowances; press each seam as you go.**

**You need to join your fabric to get the length for the border strips.**

### **Cutting**

#### **From fabric 1 cut**

52 x  $3\frac{1}{2}$ " x  $3\frac{1}{2}$ " - Block 1

#### **From fabric 2 cut**

48 x  $3\frac{1}{2}$ " x  $3\frac{1}{2}$ " - block 2

#### **From fabric 3 cut**

26 x  $3\frac{1}{2}$ " x  $3\frac{1}{2}$ " - block 1

#### **From fabric 4 cut**

24 x  $3\frac{1}{2}$ " x  $3\frac{1}{2}$ " - block 2

#### **From fabric 5 cut**

36 x  $3\frac{7}{8}$ " x  $3\frac{7}{8}$ " cut in half diagonally once - block 2

#### **From fabric 6 cut**

39 x  $3\frac{7}{8}$ " x  $3\frac{7}{8}$ " cut in half diagonally once - block 1

#### **From fabric 7 cut**

26 x  $3\frac{7}{8}$ " x  $3\frac{7}{8}$ " cut in half diagonally once - block 1

**From fabric 8 cut**

24 x 3<sup>7</sup>/<sub>8</sub>" x 3<sup>7</sup>/<sub>8</sub>" cut in half diagonally once - block 2

**From fabric 9 cut**

12 x 3<sup>7</sup>/<sub>8</sub>" x 3<sup>7</sup>/<sub>8</sub>" cut in half diagonally once - block 2

**From fabric 10 cut**

13 x 3<sup>7</sup>/<sub>8</sub>" x 3<sup>7</sup>/<sub>8</sub>" cut in half diagonally once - block 1

**From fabric 11 cut**

2 x 2<sup>1</sup>/<sub>2</sub>" x 64<sup>1</sup>/<sub>2</sub>" - border top & bottom

2 x 2<sup>1</sup>/<sub>2</sub>" x 60<sup>1</sup>/<sub>2</sub>" - border sides

100 x 3<sup>7</sup>/<sub>8</sub>" x 3<sup>7</sup>/<sub>8</sub>" cut in half diagonally once - for both blocks

**Making up the blocks**



**Block 1**



**Block 2**

Both blocks are made up in the same way. Block 1 lay out the fabric pieces for the block. Make up all the triangle blocks.



Stitch the two triangles together to make the block.

Sew the blocks in rows and then the rows together to complete the block. 13 in total for block 13

**Block 2.** This will be made up in the same way as block 1. This time you will make 12 in total.

### **Making up the quilt centre.**

Place the blocks out as in the main diagram. Stitch in rows, pressing the seams in opposite way each time. This will help way sewing the rows together to complete the quilt center.

### **Border**

Sew the sides to the quilt, press back. Next stitch the top and bottom to complete the quilt top.

### **Quilting and binding**

Sandwich the quilt top, wadding and backing together.

Quilt by hand or machine as desired. Trim the backing and wadding to size of quilt.

Use your favorite method from fabric 10 to bind the quilt.



Fabric 1



Fabric 2



Fabric 3



Fabric 4



Fabric 5



Fabric 6



Fabric 7



Fabric 8



Fabric 9



Fabric 10



Fabric 10

Sally Ablett © 2025



