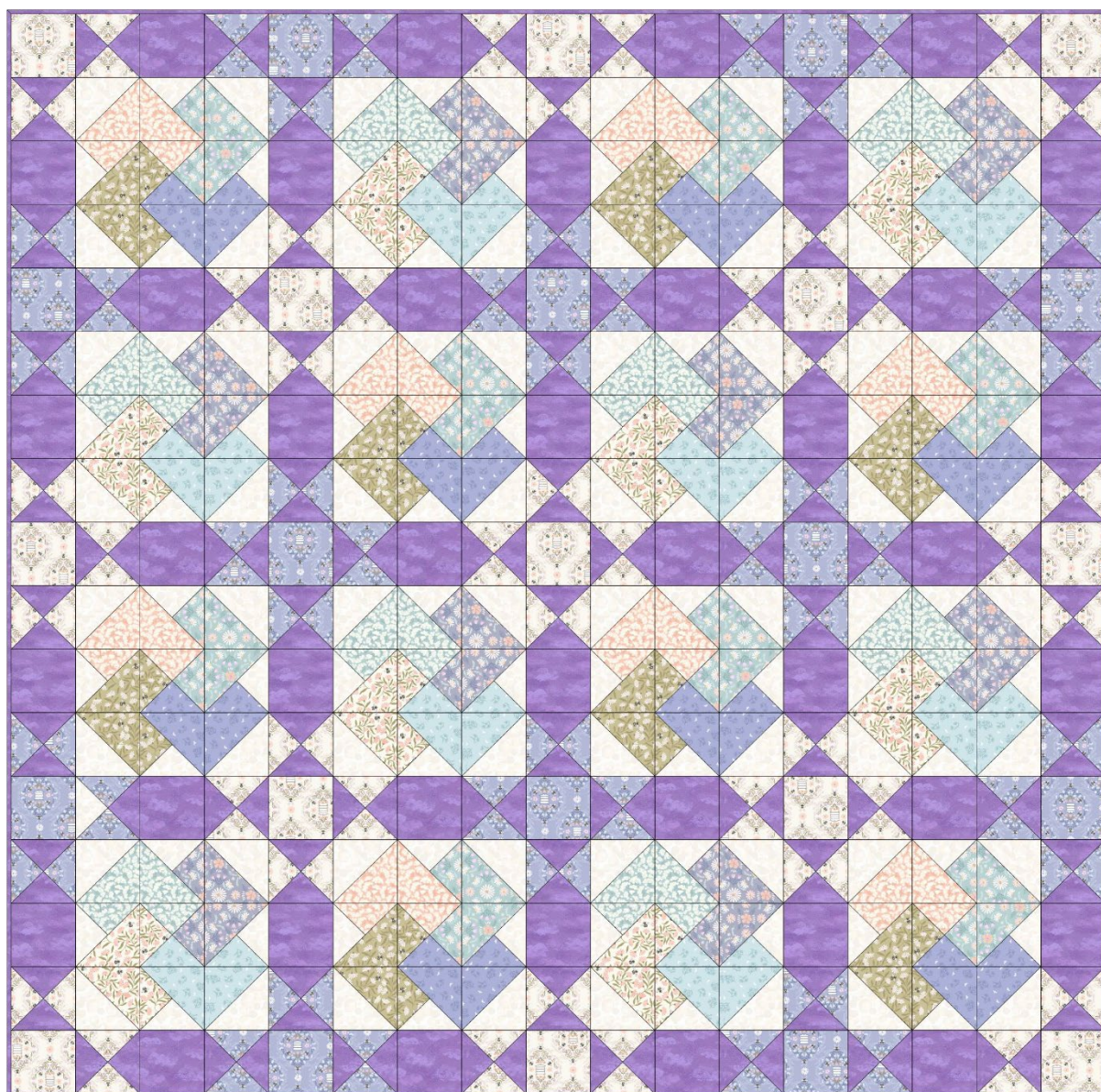




Designed and made by Sally Ablett - Quilt 1 - Size of Quilt 64" x 64"
unfinished block size 12½" x 12½" - 4½" x 12½"



Main Diagram

Fabrics from Honey Sweet collection

Requirements

1. A902.A - Cow parsley on peach blush - $\frac{3}{8}$ yd - 40cm
2. A904.C - Honey sweet bees on sage green - $\frac{3}{8}$ yd - 40cm
3. A903.A - Honey sweet flowers on blue - $\frac{3}{8}$ yd - 40cm
4. A905 C - Tiny floral bee on lilac - $\frac{3}{8}$ yd - 40cm
5. A902.B - Cow parsley on blue - $\frac{3}{8}$ yd - 40cm
6. A904.A - Honey sweet bees on cream - $\frac{3}{8}$ yd - 40cm
7. A903.C - Honey sweet flowers on soft lilac - $\frac{3}{8}$ yd - 40cm
8. A905.B - Tiny floral bee on blue - $\frac{3}{8}$ yd - 40cm
9. A901.A - Honey sweet bee hives on cream - $\frac{1}{2}$ yd - $\frac{1}{2}$ m
10. A901.C - Honey sweet bee hives on summer lilac - $\frac{1}{2}$ yd - $\frac{1}{2}$ m
11. BB01 - White - 1yd - 1m
12. D12 - Lavender dreams - $2\frac{1}{2}$ yd - $2\frac{1}{2}$ m

Wadding and backing 70" x 70"

All measurements include $\frac{1}{4}$ " seam allowances; press each seam as you go.

Cutting

From each of the fabrics 1 to 4 you need to cut

8 x $4\frac{7}{8}$ " x $4\frac{7}{8}$ " cut in half diagonally once - for block 1

4 x $5\frac{1}{4}$ " x $5\frac{1}{4}$ " cut in half diagonally twice - for block 1

From each of the fabrics 5 to 8 you need to cut

8 x $4\frac{7}{8}$ " x $4\frac{7}{8}$ " cut in half diagonally once - for block 2

4 x $5\frac{1}{4}$ " x $5\frac{1}{4}$ " cut in half diagonally twice - for block 2

From fabric 9 cut

20 x $5\frac{1}{4}$ " x $5\frac{1}{4}$ " cut in half diagonally twice - for sashing blocks

13 x $4\frac{1}{2}$ " x $4\frac{1}{2}$ " - for sashing

From fabric 10 cut

20 x $5\frac{1}{4}$ " x $5\frac{1}{4}$ " cut in half diagonally twice - for sashing blocks

12 x $4\frac{1}{2}$ " x $4\frac{1}{2}$ " - for sashing

From fabric 11 cut

16 x $5\frac{1}{4}$ " x $5\frac{1}{4}$ " cut in half diagonally twice - for both blocks 1 & 2

16 x $4\frac{7}{8}$ " x $4\frac{7}{8}$ " cut in half diagonally once - for both blocks 1 & 2

From fabric 12 cut

40 x 5¼" x 5¼" cut in half diagonally twice - for sashing blocks

40 x 4½" x 4½" - for sashing blocks

Making up the blocks. Both blocks 1 & 2 are made up in the same.

Card trick block.

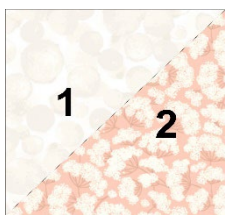


Block 1

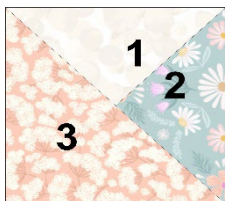


Block 2

Lay out the fabric pieces for block 1. Made up the corner squares.



sew to two triangles together to make a square.



This time stitch the two small triangles together and then sew to triangle number 3 to complete the block.



Stitch the triangles number 1 & 2 together and do the same to 3 & 4 triangles.

Now sew the two together to made a square.

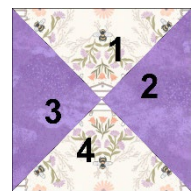
Lay out all the pieces as in block 1 diagram. Stitch in rows and then sew your rows together to complete the block. 8 blocks in total for block 1.

Block 2 will be made in the same way as block 1. 8 blocks in total for block 2.

Sashing blocks.



Sashing block diagram



Part of block

Lay out your fabric pieces for the sashing blocks. Look at placement of fabrics for each piece`s. You have four small triangles as in part of the block for sashing. Sewing number 1 triangle to number 2. Do the same to number 3 and number 4. Stitch the two larger triangles together to make a square. Lay out as in sashing diagram and sew in rows. Look at the colour placement of the sashing blocks for putting them together.

Making up the quilt top.

Lay out all the blocks and sashing as in the main diagram. Sew in rows and then stitch the rows together to complete the quilt top.

Quilting and binding

Sandwich the quilt top, wadding and backing together.

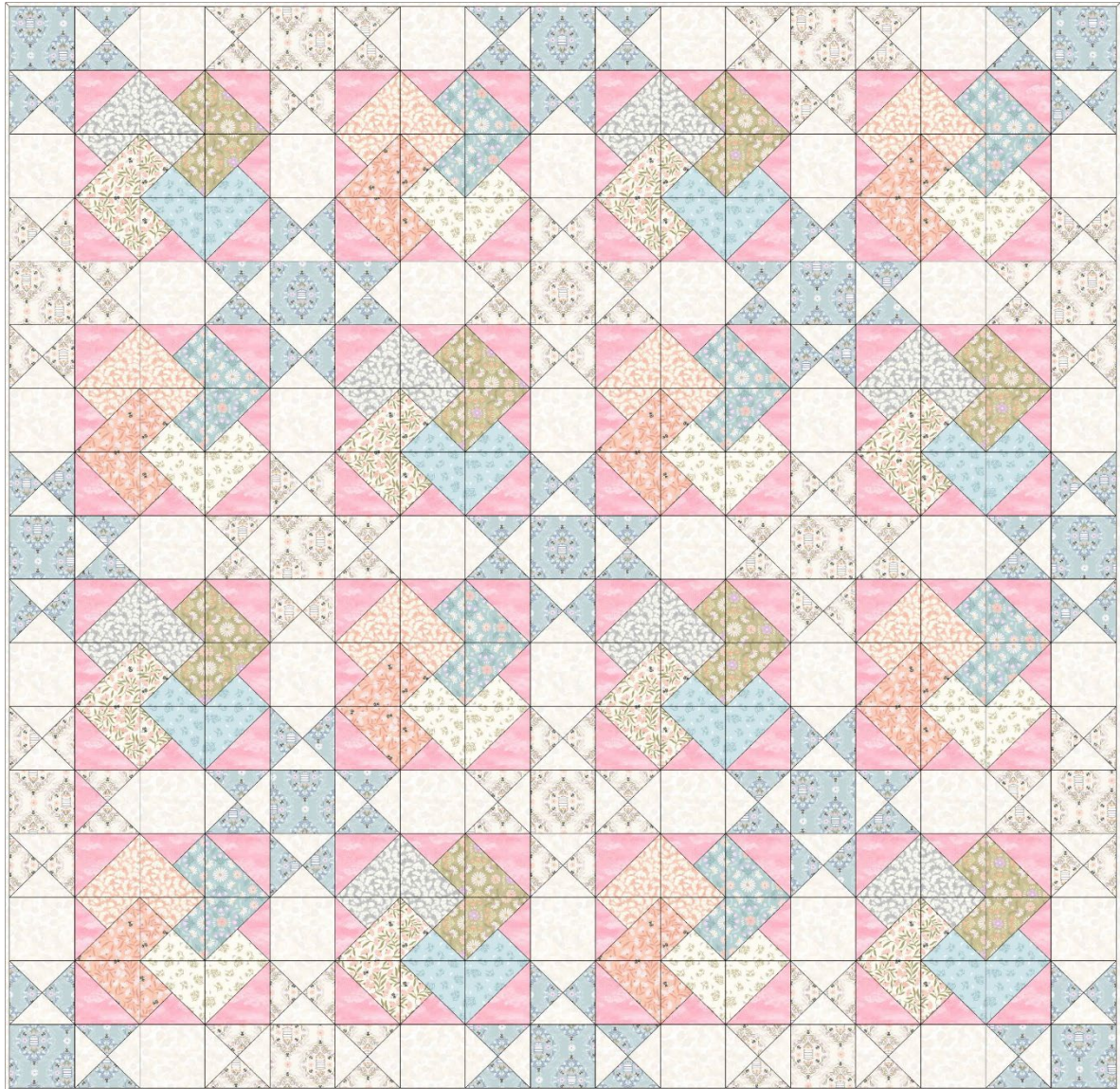
Quilt by hand or machine as desired. Trim the backing and wadding to size of quilt.

Use your favorite method from fabric 12 to bind the quilt.





Designed and made by Sally Ablett - Quilt 2 - Size of Quilt 64" x 64"
unfinished block size 12½" x 12½" - 4½" x 12½"



Main Diagram

Fabrics from Honey Sweet collection

Requirements

1. A902.C - Cow parsley on silver grey - $\frac{3}{8}$ yd - 40cm
2. A904.A - Honey sweet bees on cream - $\frac{3}{8}$ yd - 40cm
3. A903.B - Honey sweet flowers on soft green - $\frac{3}{8}$ yd - 40cm
4. A905 B - Tiny floral bee on blue - $\frac{3}{8}$ yd - 40cm
5. A902.A - Cow parsley on peach blush - $\frac{3}{8}$ yd - 40cm
6. A904.B - Honey sweet bees on peach blush - $\frac{3}{8}$ yd - 40cm
7. A903.A - Honey sweet flowers on blue - $\frac{3}{8}$ yd - 40cm
8. A905.A - Tiny floral bee on cream - $\frac{3}{8}$ yd - 40cm
9. A901.B - Honey sweet bee hives on soft blue - $\frac{1}{2}$ yd - $\frac{1}{2}$ m
10. A901.A - Honey sweet bee hives on cream - $\frac{1}{2}$ yd - $\frac{1}{2}$ m
11. D14 - Bright pink dreams - 1yd - 1m
12. BB01 - White D14 - $2\frac{1}{2}$ yd - $2\frac{1}{2}$ m

Wadding and backing 70" x 70"

All measurements include $\frac{1}{4}$ " seam allowances; press each seam as you go.

Cutting

From each of the fabrics 1 to 4 you need to cut

8 x $4\frac{7}{8}$ " x $4\frac{7}{8}$ " cut in half diagonally once - for block 1

4 x $5\frac{1}{4}$ " x $5\frac{1}{4}$ " cut in half diagonally twice - for block 1

From each of the fabrics 5 to 8 you need to cut

8 x $4\frac{7}{8}$ " x $4\frac{7}{8}$ " cut in half diagonally once - for block 2

4 x $5\frac{1}{4}$ " x $5\frac{1}{4}$ " cut in half diagonally twice - for block 2

From fabric 9 cut

20 x $5\frac{1}{4}$ " x $5\frac{1}{4}$ " cut in half diagonally twice - for sashing blocks

13 x $4\frac{1}{2}$ " x $4\frac{1}{2}$ " - for sashing

From fabric 10 cut

20 x $5\frac{1}{4}$ " x $5\frac{1}{4}$ " cut in half diagonally twice - for sashing blocks

12 x $4\frac{1}{2}$ " x $4\frac{1}{2}$ " - for sashing

From fabric 11 cut

16 x $5\frac{1}{4}$ " x $5\frac{1}{4}$ " cut in half diagonally twice - for both blocks 1 & 2

16 x $4\frac{7}{8}$ " x $4\frac{7}{8}$ " cut in half diagonally once - for both blocks 1 & 2

From fabric 12 cut

40 x 5¼" x 5¼" cut in half diagonally twice - for sashing blocks

40 x 4½" x 4½" - for sashing blocks

Making up the blocks. Both blocks 1 & 2 are made up in the same.

Card trick block.

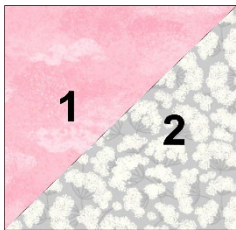


Block 1



Block 2

Lay out the fabric pieces for block 1. Made up the corner squares.



sew to two triangles together to make a square.



This time stitch the two small triangles together and then sew to triangle number 3 to complete the block.



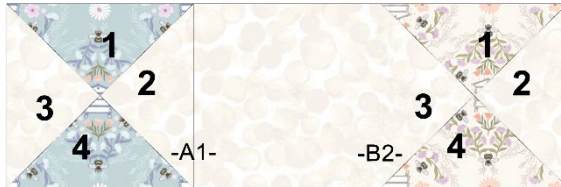
Stitch the triangles number 1 & 2 together and do the same to 3 & 4 triangles.

Now sew the two together to made a square.

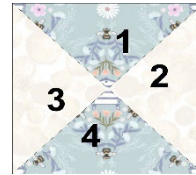
Lay out all the pieces as in block 1 diagram. Stitch in rows and then sew your rows together to complete the block. 8 blocks in total for block 1.

Block 2 will be made in the same way as block 1. 8 blocks in total for block 2.

Sashing blocks.



Sashing block diagram



Part of block

Lay out your fabric pieces for the sashing blocks. Look at placement of fabrics for each piece's. You have four small triangles as in part of the block for sashing. Sewing number 1 triangle to number 2. Do the same to number 3 and number 4. Stitch the two larger triangles together to make a square. Lay out as in sashing diagram and sew in rows. Look at the colour placement of the sashing blocks for putting them together.

Making up the quilt top.

Lay out all the blocks and sashing as in the main diagram. Sew in rows and then stitch the rows together to complete the quilt top.

Quilting and binding

Sandwich the quilt top, wadding and backing together.

Quilt by hand or machine as desired. Trim the backing and wadding to size of quilt.

Use your favorite method from fabric 12 to bind the quilt.

