

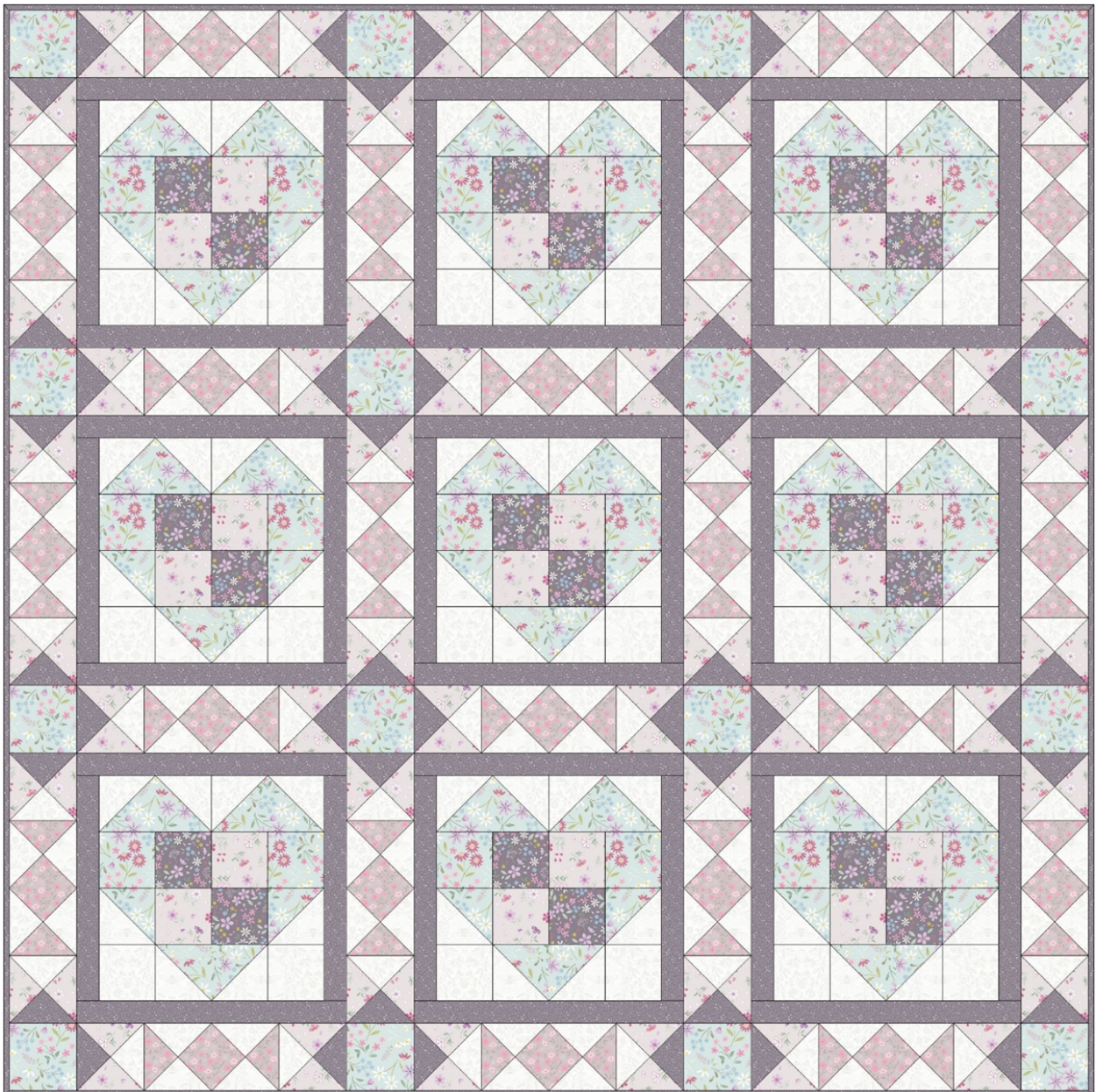


# Pressed Flower Quilt

CASSANDRA  
CONNOLLY

Designed and made by Sally Ablett

Size of quilt 48" x 48",  
Unfinished block sizes- 12½" x 12½"  
Sashing- 3½" x 12½"



Main Diagram





## Requirements

Fabrics from The Pressed Flowers Collection by Cassandra Connolly for Lewis and Irene.

1. CC51.3 - Sleeping Bloom - Light Teal - 5/8 yd
2. CC52.3 - Floral Ode - Light Charcoal Grey - Fat ¼
3. CC53.2 - Floral Affections- Mink - 5/8 yd
4. CC54.3 - Timeless Blossom- Deep Taupe - ¾yd
5. CC55.3 -Pressed Posy- Light Charcoal Grey - 1 yd

Wadding and backing 52" x 52"



All measurements include ¼" seam allowances; press each seam as you go.

## Cutting

From fabric 1 cut

7 x 6¼" x 6¼" cut in half diagonally twice - block 1 with 1 tringle over.

16 x 3½" x 3½" - sashing

9 x 3 ⅜" x 3 ⅜" cut in half diagonally once - block 1

18 x 3" x 3" - block 1

From fabric 2 cut

18 x 3" x 3" - block 1

From fabric 3 cut

24 x 4¼" x 4¼" cut in half diagonally twice - sashing

18 x 3" x 3" - block 1

From fabric 4 cut

24 x 4¼" x 4¼" cut in half diagonally twice - sashing

From fabric 5 cut

12 x 4¼" x 4¼" cut in half diagonally twice - sashing

18 x 1½" x 12½" - block 1 top & bottom

18 x 1½" x 10½" - block 1 sides

From fabric 6 cut

36 x 4¼" x 4¼" cut in half diagonally twice - sashing

36 x 3 ⅜" x 3 ⅜" cut in half diagonally once - block 1

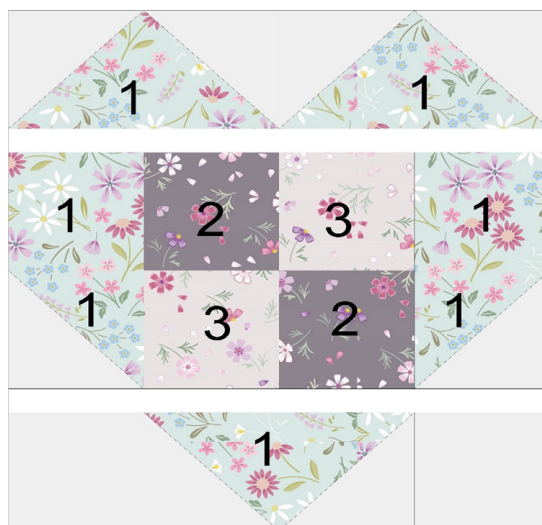
18 x 3" x 3" - block 1



# Making up the blocks

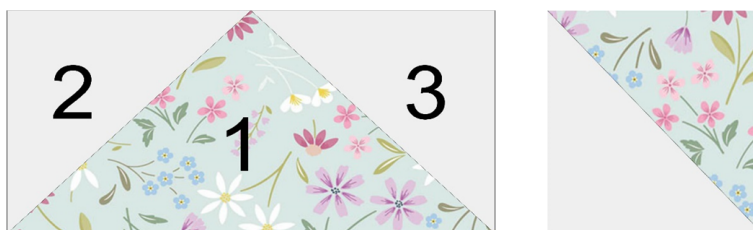


Block 1 Diagram



Sewing rows, fabric numbers and the lay out of the center part of the block.

Lay out all the pieces for the block. Make up the Flying Geese block by sewing the long side of number 2 of the small triangles to the short side of the larger triangle number 1. Do the same to the other side number 3.



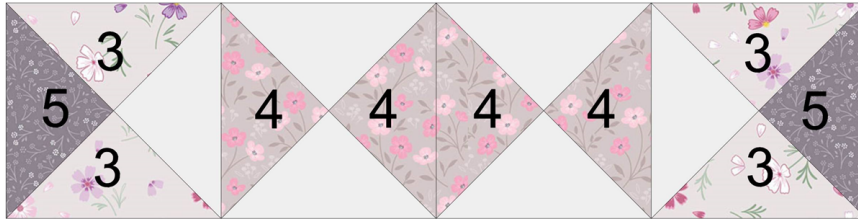
Sew the two small triangles together to make a square.

Place all the pieces as sewing rows. Stitch the top row together.

Sew the squares in the centre of the block and add the Flying Geese to each side. Now the last row, the Flying Geese and the two squares each side. Stitch the rows together and add fabric 5 strips to the sides and then the top and the bottom to complete the block. There are 9 blocks in total.



## Sashing Strips



Block lay out with fabric numbers. This is made up of 4 squares.



One of the squares.

Sew two small triangles together and then stitch the two together to complete the square. All are made up in the same way. Stitch the four blocks together to make the strip. 24 in total.

## Making up the quilt

To complete the throw, lay out all of the blocks and sashing strips as in the main diagram. Stitch in rows and then sew the rows together.

Press your seams in the opposite way each time as this will help when sewing the rows together.

## Quilting

Sandwich quilt top, wadding and backing together. Quilt by hand or machine as desired.

Trim backing and wadding to size of quilt.

## Binding

Use your favourite binding method using fabric 5 to bind the quilt.

Sally Ablett © 2025

