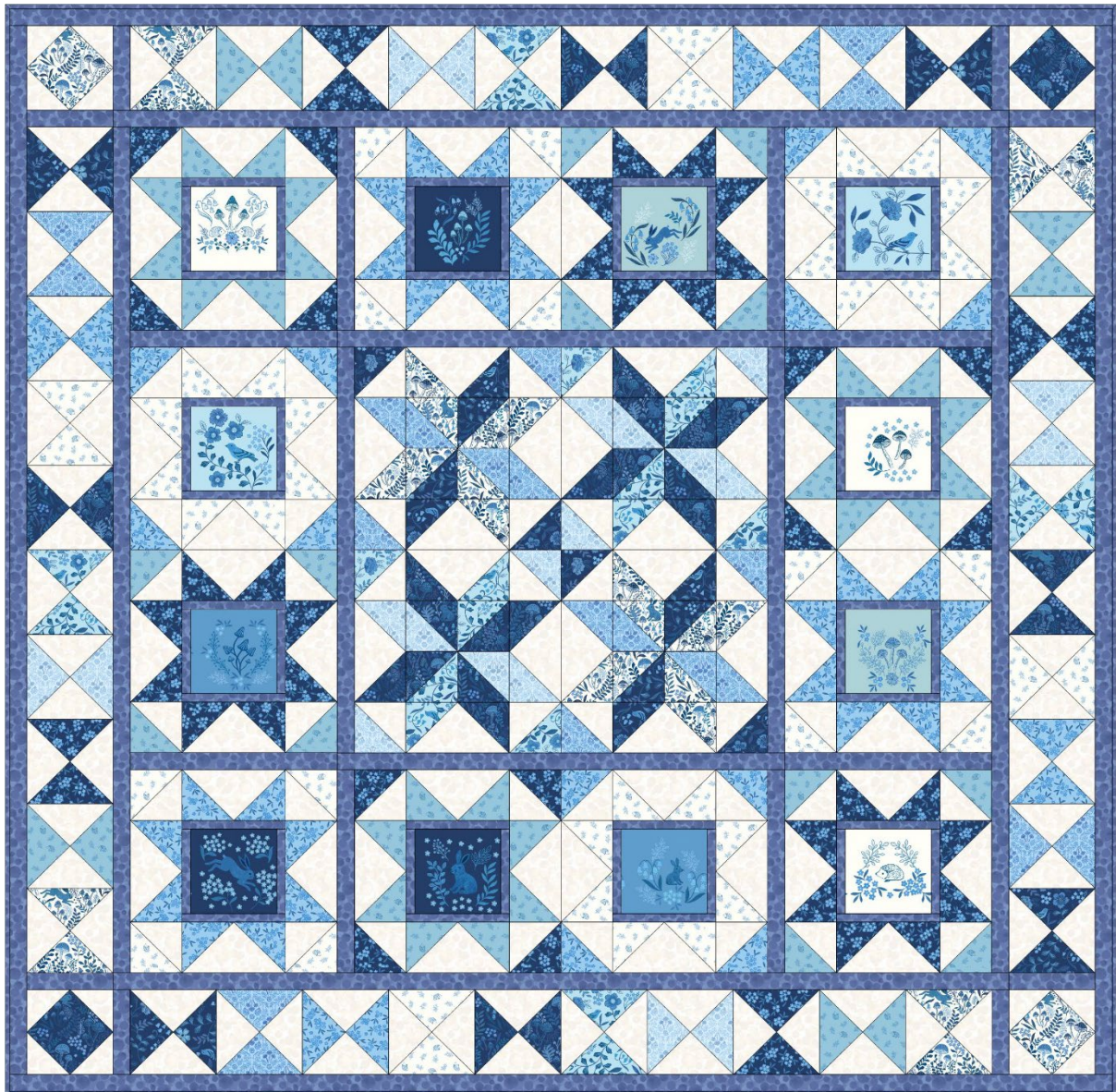




Designed and made by Sally Ablett - Quilt 1

Size of runner 64" x 64" - unfinished block size 12½" x 12½" - 5½" x 5½"



Main Diagram

Fabrics from Forget-Me-Not Lane collection

Requirements

1. A913.A - Rabbit meadow on cream - $\frac{3}{8}$ yd
2. A913.C - Rabbit meadow on dark blue - $\frac{3}{8}$ yd
3. A914.A - Little hedgehog on cream - fat $\frac{1}{4}$
4. A914.B - Little hedgehog on sky blue - fat $\frac{1}{4}$
5. A915.B - Forget me not on light blue - fat $\frac{1}{4}$
6. A915.C - Forget me not on dark blue - fat $\frac{1}{4}$
7. A916.A - Woodland mushrooms on pale blue - fat $\frac{1}{4}$
8. A916.C - Woodland mushrooms on mid blue - fat $\frac{1}{4}$
9. A917.A - Countryside birds on China blue - fat $\frac{1}{4}$
10. A917.C - Countryside birds on dark blue - fat $\frac{1}{4}$
11. 5" Panels
12. BB01 - White - $1\frac{7}{8}$ yd - 1.70m
13. BB012 - St Ives blue - $1\frac{1}{2}$ yd - $1\frac{1}{2}$ m

Wadding and backing 70" x 70"

All measurements include $\frac{1}{4}$ " seam allowances; press each seam as you go.

You need to join your fabric to get the length for the border strips.

Cutting

From fabric 1 cut

2 x $6\frac{1}{4}$ " x $6\frac{1}{4}$ " cut in half diagonally twice - border

2 x 4" x 4" - border corner blocks

8 x $3\frac{7}{8}$ " x $3\frac{7}{8}$ " cut in half diagonally once - block 2 A

From fabric 2 cut

2 x $6\frac{1}{4}$ " x $6\frac{1}{4}$ " cut in half diagonally twice - border

2 x 4" x 4" - border corner blocks

8 x $3\frac{7}{8}$ " x $3\frac{7}{8}$ " cut in half diagonally once - block 2 B

From fabric 3 cut

2 x $6\frac{1}{4}$ " x $6\frac{1}{4}$ " cut in half diagonally twice border

18 x $3\frac{7}{8}$ " x $3\frac{7}{8}$ " cut in half diagonally once - block 1

From fabric 4 cut

2 x 6 $\frac{1}{4}$ " x 6 $\frac{1}{4}$ " cut in half diagonally twice - border
18 x 3 $\frac{7}{8}$ " x 3 $\frac{7}{8}$ " cut in half diagonally once - block 1

From fabric 5 cut

2 x 6 $\frac{1}{4}$ " x 6 $\frac{1}{4}$ " cut in half diagonally twice - border
18 x 3 $\frac{7}{8}$ " x 3 $\frac{7}{8}$ " cut in half diagonally once - block 1

From fabric 6 cut

2 x 6 $\frac{1}{4}$ " x 6 $\frac{1}{4}$ " cut in half diagonally twice - border
18 x 3 $\frac{7}{8}$ " x 3 $\frac{7}{8}$ " cut in half diagonally once - block 1

From fabric 7 cut

6 x 3 $\frac{7}{8}$ " x 3 $\frac{7}{8}$ " cut in half diagonally once - block 2 B
2 x 6 $\frac{1}{4}$ " x 6 $\frac{1}{4}$ " cut in half diagonally twice - border

From fabric 8 cut

6 x 3 $\frac{7}{8}$ " x 3 $\frac{7}{8}$ " cut in half diagonally once - block 2 A
2 x 6 $\frac{1}{4}$ " x 6 $\frac{1}{4}$ " cut in half diagonally twice - border

From fabric 9 cut

6 x 3 $\frac{7}{8}$ " x 3 $\frac{7}{8}$ " cut in half diagonally once - block 2 A
2 x 6 $\frac{1}{4}$ " x 6 $\frac{1}{4}$ " cut in half diagonally twice - border

From fabric 10 cut

6 x 3 $\frac{7}{8}$ " x 3 $\frac{7}{8}$ " cut in half diagonally once - block 2 B
2 x 6 $\frac{1}{4}$ " x 6 $\frac{1}{4}$ " cut in half diagonally twice - border

From fabric 11 cut

12 x 5 $\frac{1}{2}$ " x 5 $\frac{1}{2}$ " - block 1

From fabric 12 cut

16 x 7 $\frac{1}{4}$ " x 7 $\frac{1}{4}$ " cut in half diagonally twice - blocks 1 & 2
20 x 6 $\frac{1}{4}$ " x 6 $\frac{1}{4}$ " cut in half diagonally twice - border
8 x 3 $\frac{3}{8}$ " x 3 $\frac{3}{8}$ " cut in half diagonally once - corner blocks

From fabric 13 cut

2 x 1 $\frac{1}{2}$ " x 64 $\frac{1}{2}$ " top & bottom - border

2 x 1½" x 62½" sides - border

2 x 1½" x 52½" top & bottom

2 x 1½" x 59½" sides

2 x 1½" x 26½" top & bottom

2 x 1½" x 24½" sides

8 x 1½" x 12½"

8 x 1½" x 5½"

24 x 1" x 6½" top & bottom block 1

24 x 1" x 5½" sides block 1

Making up the blocks



Block 1

Block 2A

Block 2B

Block 1

Lay out all the fabric pieces for the block. Look at the main diagram for which colour fabrics you need for each block.

Making the Flying Geese blocks by sewing a small triangle number 2 on the long sides to the short side of the larger triangle number 1, press back. Do the same to the other small triangle number 3.



Next stitch the corner square by sewing the two triangles together to make a square. Now the center part of the block. Sew the strips 1½" x 5½" to the sides and then the top and

bottom. Lay out all the pieces for the block and sew in rows. Now sew them together to complete the block. 12 in total of block 1.

Blocks 2A and 2B.

Both blocks are made up in the same way. The Flying Geese block is made up as before in block 1. Stitch the triangles together to make squares. Lay out all the pieces as in block diagram. Stitch in rows and then sew the rows together to complete the block. 4 in total.

Block 3 and 4



Block 3



Block 4 - corner square block

On block 3 sew the small triangles together. Number 1 to 2 and then 3 to 4. Next stitch the two triangles together to make a square.

Block 4. Take a 4" x 4" square and the 3³/₈" triangles. Fold the square in half and do the same to the triangle along the long edge. Match the two folds and pin into place. So, 2 and 3 press and then 4 and 5 to make a square. 2 of each colour way in total.

Making up the quilt top

Start with the 4 center squares of block 2. Stitch in rows and then the rows together.

Take the fabric strips of fabric 13 1/2" x 24 1/2" and stitch to the sides, press back. Now the strips 1 1/2" x 26 1/2" to the top and bottom.

Adding block 1 to the quilt. Sew 2 blocks together as in the main diagram. For the sides add a strip to the top and bottom. Stitch to the sides, press back. With the top and bottom add the strips to each end and then the blocks. Stitch to the quilt top and bottom.

Now add the strips 1 1/2" x 50 1/2" to the sides, press and then the 1 1/2" x 52 1/2" to the top and bottom.

Block border with blocks 3 and 4.

Lay out the block colours as in the main diagram. On the sides strips add a 1½" x 5½" to the top and bottom. Sew this to the quilt.

On the top and bottom add the strips and then a block to each end. Sew to the quilt. Sew the last border strips. Sides and then the top and bottom to complete the quilt top.

Quilting and binding

Sandwich the quilt top, wadding and backing together.

Quilt by hand or machine as desired. Trim the backing and wadding to size of quilt.

Use your favorite method from fabric 13 to bind the quilt.



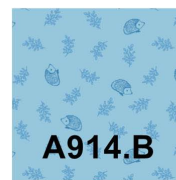
Fabric 1



Fabric 2



Fabric 3



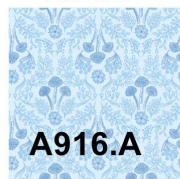
Fabric 4



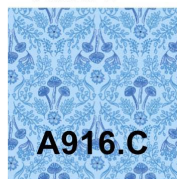
Fabric 5



Fabric 6



Fabric 7



Fabric 8



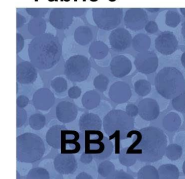
Fabric 9



Fabric 10



Fabric 12



Fabric 13

Sally Ablett © 2025



Designed and made by Sally Ablett - Quilt 2

Size of runner 64" x 64" - unfinished block size 12½" x 12½" - 5½" x 5½"



Main Diagram

Fabrics from Forget-Me-Not Lane collection

Requirements

1. A913.A - Rabbit meadow on cream - $\frac{3}{8}$ yd
2. A913.B - Rabbit meadow on eggshell blue - $\frac{3}{8}$ yd
3. A914.A - Little hedgehog on cream - fat $\frac{1}{4}$
4. A914.C - Little hedgehog on country blue - fat $\frac{1}{4}$
5. A915.A - Forget me not on cream - fat $\frac{1}{4}$
6. A915.C - Forget me not on dark blue - fat $\frac{1}{4}$
7. A916.A - Woodland mushrooms on pale blue - fat $\frac{1}{4}$
8. A916.B - Woodland mushrooms on pale duck egg - fat $\frac{1}{4}$
9. A917.B - Countryside birds on mid denim blue - fat $\frac{1}{4}$
10. A917.C - Countryside birds on dark blue - fat $\frac{1}{4}$
11. 5 " Panels
12. BB01 - White - $1\frac{7}{8}$ yd - 1.70m
13. BB03 - Light grey - $1\frac{1}{2}$ yd - $1\frac{1}{2}$ m

Wadding and backing 70" x 70"

All measurements include $\frac{1}{4}$ " seam allowances; press each seam as you go.

You need to join your fabric to get the length for the border strips.

Cutting

From fabric 1 cut

2 x $6\frac{1}{4}$ " x $6\frac{1}{4}$ " cut in half diagonally twice - border

2 x 4" x 4" - border corner blocks

8 x $3\frac{7}{8}$ " x $3\frac{7}{8}$ " cut in half diagonally once - block 2 A

From fabric 2 cut

2 x $6\frac{1}{4}$ " x $6\frac{1}{4}$ " cut in half diagonally twice - border

2 x 4" x 4" - border corner blocks

8 x $3\frac{7}{8}$ " x $3\frac{7}{8}$ " cut in half diagonally once - block 2 B

From fabric 3 cut

2 x $6\frac{1}{4}$ " x $6\frac{1}{4}$ " cut in half diagonally twice border

18 x $3\frac{7}{8}$ " x $3\frac{7}{8}$ " cut in half diagonally once - block 1

From fabric 4 cut

2 x 6 $\frac{1}{4}$ " x 6 $\frac{1}{4}$ " cut in half diagonally twice - border
18 x 3 $\frac{7}{8}$ " x 3 $\frac{7}{8}$ " cut in half diagonally once - block 1

From fabric 5 cut

2 x 6 $\frac{1}{4}$ " x 6 $\frac{1}{4}$ " cut in half diagonally twice - border
18 x 3 $\frac{7}{8}$ " x 3 $\frac{7}{8}$ " cut in half diagonally once - block 1

From fabric 6 cut

2 x 6 $\frac{1}{4}$ " x 6 $\frac{1}{4}$ " cut in half diagonally twice - border
18 x 3 $\frac{7}{8}$ " x 3 $\frac{7}{8}$ " cut in half diagonally once - block 1

From fabric 7 cut

6 x 3 $\frac{7}{8}$ " x 3 $\frac{7}{8}$ " cut in half diagonally once - block 2 B
2 x 6 $\frac{1}{4}$ " x 6 $\frac{1}{4}$ " cut in half diagonally twice - border

From fabric 8 cut

6 x 3 $\frac{7}{8}$ " x 3 $\frac{7}{8}$ " cut in half diagonally once - block 2 A
2 x 6 $\frac{1}{4}$ " x 6 $\frac{1}{4}$ " cut in half diagonally twice - border

From fabric 9 cut

6 x 3 $\frac{7}{8}$ " x 3 $\frac{7}{8}$ " cut in half diagonally once - block 2 A
2 x 6 $\frac{1}{4}$ " x 6 $\frac{1}{4}$ " cut in half diagonally twice - border

From fabric 10 cut

6 x 3 $\frac{7}{8}$ " x 3 $\frac{7}{8}$ " cut in half diagonally once - block 2 B
2 x 6 $\frac{1}{4}$ " x 6 $\frac{1}{4}$ " cut in half diagonally twice - border

From fabric 11 cut

12 x 5 $\frac{1}{2}$ " x 5 $\frac{1}{2}$ " - block 1

From fabric 12 cut

16 x 7 $\frac{1}{4}$ " x 7 $\frac{1}{4}$ " cut in half diagonally twice - blocks 1 & 2
20 x 6 $\frac{1}{4}$ " x 6 $\frac{1}{4}$ " cut in half diagonally twice - border
8 x 3 $\frac{3}{8}$ " x 3 $\frac{3}{8}$ " cut in half diagonally once - corner blocks

From fabric 13 cut

2 x 1 $\frac{1}{2}$ " x 64 $\frac{1}{2}$ " top & bottom - border

2 x 1½" x 62½" sides - border

2 x 1½" x 52½" top & bottom

2 x 1½" x 59½" sides

2 x 1½" x 26½" top & bottom

2 x 1½" x 24½" sides

8 x 1½" x 12½"

8 x 1½" x 5½"

24 x 1" x 6½" top & bottom block 1

24 x 1" x 5½" sides block 1

Making up the blocks



Block 1



Block 2A



Block 2B

Block 1

Lay out all the fabric pieces for the block. Look at the main diagram for which colour fabrics you need for each block.

Making the Flying Geese blocks by sewing a small triangle number 2 on the long sides to the short side of the larger triangle number 1, press back. Do the same to the other small triangle number 3.



Next stitch the corner square by sewing the two triangles together to make a square. Now the center part of the block. Sew the strips 1½" x 5½" to the sides and then the top and

bottom. Lay out all the pieces for the block and sew in rows. Now sew them together to complete the block. 12 in total of block 1.

Blocks 2A and 2B.

Both blocks are made up in the same way. The Flying Geese block is made up as before in block 1. Stitch the triangles together to make squares. Lay out all the pieces as in block diagram. Stitch in rows and then sew the rows together to complete the block. 4 in total.

Block 3 and 4



Block 3



Block 4 - corner square block

On block 3 sew the small triangles together. Number 1 to 2 and then 3 to 4. Next stitch the two triangles together to make a square.

Block 4. Take a 4" x 4" square and the 3³/₈" triangles. Fold the square in half and do the same to the triangle along the long edge. Match the two folds and pin into place. So, 2 and 3 press and then 4 and 5 to make a square. 2 of each colour way in total.

Making up the quilt top

Start with the 4 center squares of block 2. Stitch in rows and then the rows together.

Take the fabric strips of fabric 13 1¹/₂" x 24¹/₂" and stitch to the sides, press back. Now the strips 1¹/₂" x 26¹/₂" to the top and bottom.

Adding block 1 to the quilt. Sew 2 blocks together as in the main diagram. For the sides add a strip to the top and bottom. Stitch to the sides, press back. With the top and bottom add the strips to each end and then the blocks. Stitch to the quilt top and bottom.

Now add the strips 1¹/₂" x 50¹/₂" to the sides, press and then the 1¹/₂" x 52¹/₂" to the top and bottom.

Block border with blocks 3 and 4.

Lay out the block colours as in the main diagram. On the sides strips add a 1½" x 5½" to the top and bottom. Sew this to the quilt.

On the top and bottom add the strips and then a block to each end. Sew to the quilt. Sew the last border strips. Sides and then the top and bottom to complete the quilt top.

Quilting and binding

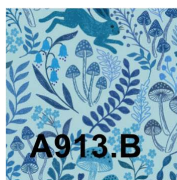
Sandwich the quilt top, wadding and backing together.

Quilt by hand or machine as desired. Trim the backing and wadding to size of quilt.

Use your favorite method from fabric 13 to bind the quilt.



Fabric 1



Fabric 2



Fabric 3



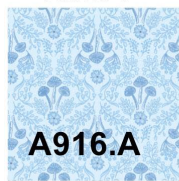
Fabric 4



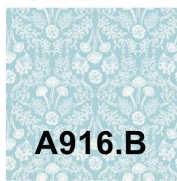
Fabric 5



Fabric 6



Fabric 7



Fabric 8



Fabric 9



Fabric 10



Fabric 12



Fabric 13

Sally Ablett © 2025

