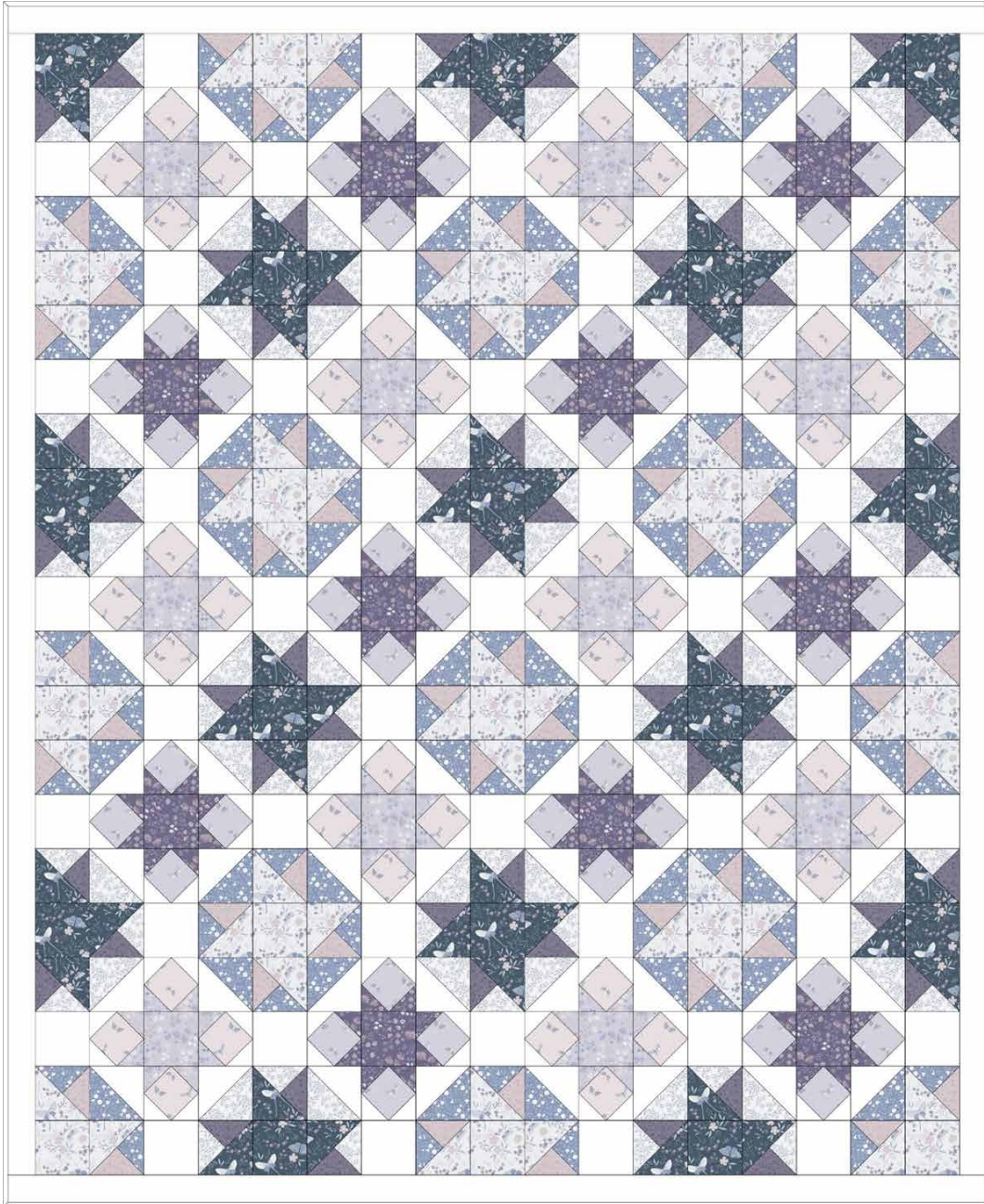


# Evenfall Quilt

CASSANDRA  
CONNOLLY

Designed and made by Sally Ablett

Size of quilt 54" x 66",  
Unfinished block sizes- 9 ½" x 9 ½"  
Sashing- 3 ½" x 3 ½" - 3 ½" x 9 ½"



Main Diagram





## Requirements

Fabrics from Evenfall collection by Cassandra Connolly for Lewis and Irene.

1. CC41.1 - Evenfall - Pale Grey - ½m
2. CC41.3 - Evenfall - Midnight Blue - ½m
3. CC42.2 - Night Garden - Pale Misty Lilac - 40cm
4. CC42.3 - Night Garden - Deep Purple - 40cm
5. CC43.1 - Moonflower - Pale Grey - ½m
6. CC43.2 - Moonflower - Dark Periwinkle - ½m
7. CC44.1 - Twilight - Light Dusky Pink - fat ¼
8. CC44.2 - Twilight - Pale Misty Lilac - fat¼
9. CC45.2 - Floral Dusk - Dusky Pink - ½m
10. CC45.3 - Floral Dusk - Dusky Purple - ½m
11. Background - 2m

Wadding and backing 60" x 72"



All measurements include ¼" seam allowances; press each seam as you go.

You will need to join your fabric to get the length for the border strips.

## Cutting

From fabric 1 cut  
 25 x 3 7/8" x 3 7/8" cut in half diagonally once (you will have 1 triangle over)  
 15 x 3 ½" x 3 ½"

From fabric 2 cut  
 25 x 3 7/8" x 3 7/8" cut in half diagonally once (you will have 1 triangle over)  
 15 x 3 ½" x 3 ½"

From fabric 3 cut  
 10 x 3 ½" x 3 ½"  
 40 x 2 3/8" x 2 3/8" cut in half diagonally once

From fabric 4 cut  
 10 x 3 ½" x 3 ½"  
 40 x 2 3/8" x 2 3/8" cut in half diagonally once



From fabric 5 cut  
13 x 4¼" x 4¼" cut in half diagonally twice (you will have 3 over)  
20 x 3 7/8" x 3 7/8" cut in half diagonally once

From fabric 6 cut  
13 x 4¼" x 4¼" cut in half diagonally twice (you will have 3 over)  
20 x 3 7/8" x 3 7/8" cut in half diagonally once

From fabric 7 cut  
40 x 2 5/8" x 2 5/8"

From fabric 8 cut  
40 x 2 5/8" x 2 5/8"

From fabric 9 cut  
13 x 4¼" x 4¼" cut in half diagonally twice (you will have 3 over)

From fabric 10 cut  
13 x 4¼" x 4¼" cut in half diagonally twice (you will have 3 over)

From fabric 11 cut  
2 x 2" x 65½" outer border sides  
2 x 2" x 54½" outer border for top & bottom  
40 x 3 7/8" x 3 7/8" cut in half diagonally once  
49 x 3½" x 3½"  
80 x 2 3/8" x 2 3/8" cut in half diagonally once

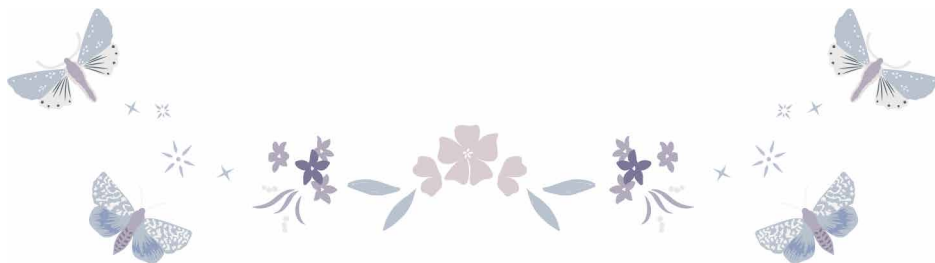
## *Making up the blocks*

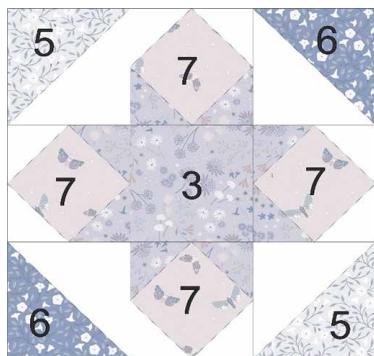
On each of the blocks I have put the fabric numbers to help you and the alphabet for assembling the blocks.

The sashing is made up of blocks so I have added a diagram of the quilt with just the sashing and blocks 1 & 2 are blanked out.

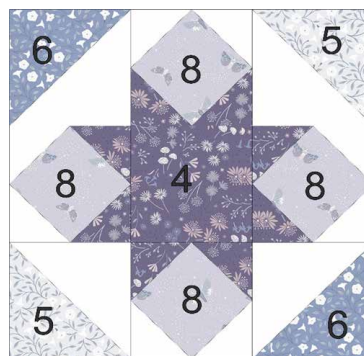
On this diagram I have put the sewing rows. The odd number will be the narrow rows and the even numbers will have your blocks in.

Both block 1 and 2 are made up in the same way. Lay out the fabric pieces for block 1.

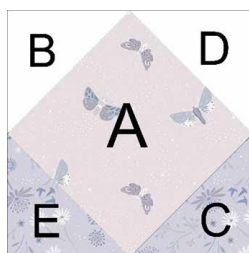




Block 1



Block 2



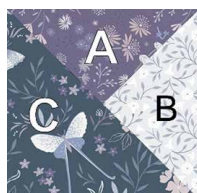
Stitch the B triangle to the square, press back. Next sew C and then D and E to make square. Do the same to the other 3 block pieces. Now sew the corner triangles together to make a square.

You will have 10 in total for block 1 and block 2.

## *Sashing Pieces*



Sashing strips diagram



Part of the sashing

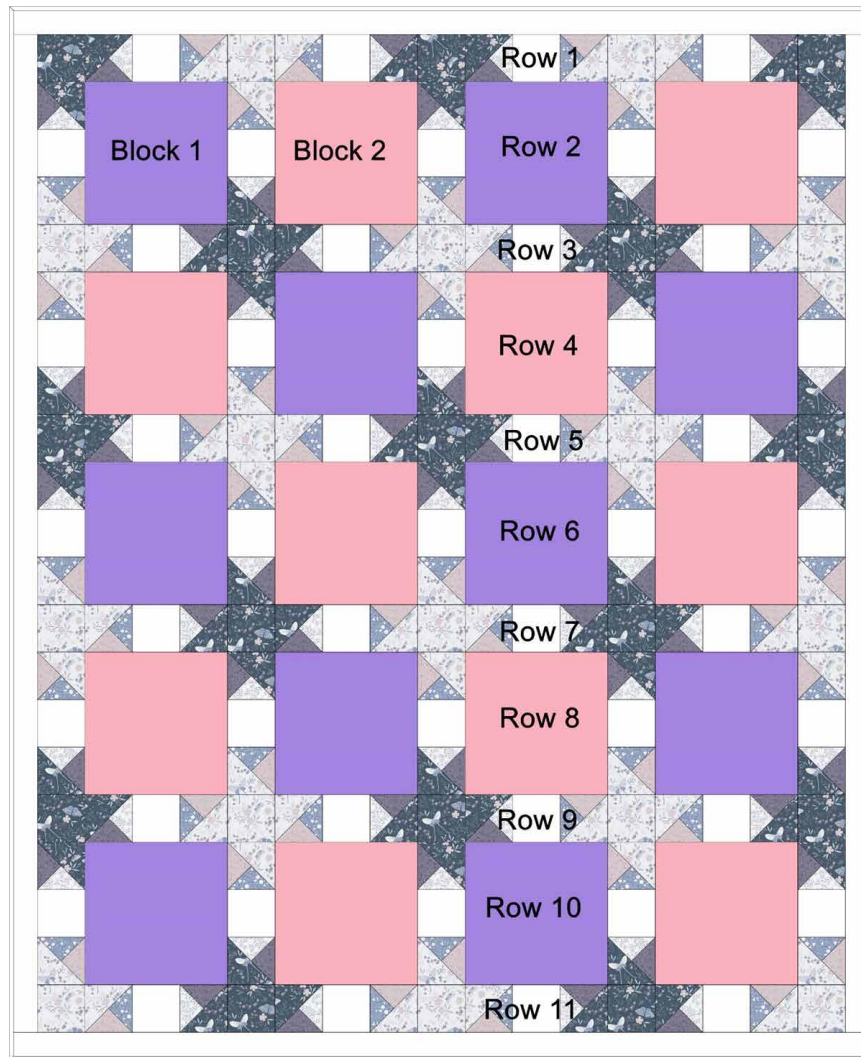


Lay out the fabric pieces for the sashing strips. Look at the main diagram for the lay out of the fabrics. Stitch two of the small triangles together, press and then sew to the larger triangle to complete the block.

Looking at the main diagram for colour lay out for each set of three. Stitch two of the small blocks together with a plain square in between.

When all the sashing blocks are sewn together you are ready to sew the quilt together.

## *Making up the quilt*



As you can see, I have put block 1 & 2 in a plain colour. Start by sewing row 1 together, with a square and then the sashing block. Press your seams to the right on this strip. Row 2 this will be a sashing block to start and ending with a sashing block, but this time press your seams to the left.

Stitch all the rows and then sew them together to complete the quilt center.



## Border

Sew the sides to the quilt, press back and then top and bottom to complete your quilt top.

## Quilting

Sandwich quilt top, wadding and backing together. Quilt by hand or machine as desired.

Trim backing and wadding to size of quilt.

## Binding

Use your favourite binding method using fabric 11 to bind the quilt.

Sally Ablett © 2025

