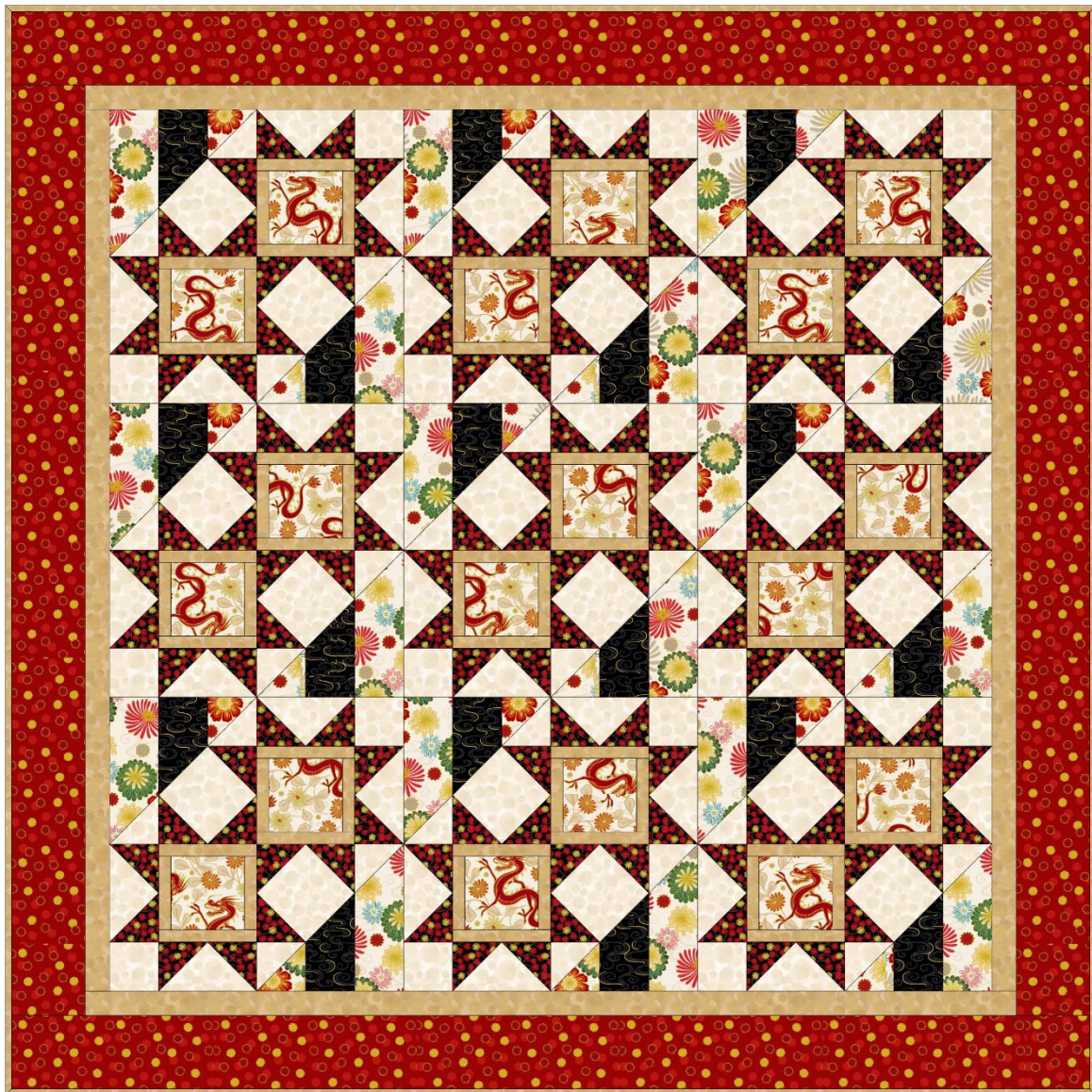




Designed and made by Sally Ablett - Table topper 1

Size of runner 44" x 44" - unfinished block size 12½" x 12½"



**Main Diagram**

## Requirements

Fabrics from the Year of the Dragon collection:

1. A862.1 - Dragon on cream with gold metallic - fat $\frac{1}{4}$
2. A863.2 - Red and gold cosmos with gold metallic -  $\frac{3}{4}$ yd - 70cm
3. A864.3 - Dragon swirl on black with gold metallic - fat $\frac{1}{4}$
4. A865.2 - Red and gold aster on black with gold metallic -  $\frac{1}{2}$ yd -  $\frac{1}{2}$ m
5. A866.1 - Multi Year of the Dragon floral on cream gold metallic -  $\frac{3}{8}$ yd - 40cm
6. BB148 - Cream -  $\frac{5}{8}$ yd - 60cm
7. BB151 - Gold -  $\frac{3}{8}$ yd - 40cm

Wadding and backing 50" x 50"

**All measurements include  $\frac{1}{4}$ " seam allowances; press each seam as you go. You need to join your fabric to get the length for the border strips.**



cutting a 45° angle from top left to bottom right. ♥♥

### Cutting

#### From fabric 1 cut

18  $\frac{3}{2}$ " x 3  $\frac{1}{2}$ "

#### From fabric 2 cut

2 x 3  $\frac{1}{2}$ " x 38  $\frac{1}{2}$ " (outer border - sides)

2 x 3  $\frac{1}{2}$ " x 44  $\frac{1}{2}$ " (outer border - top & bottom)

#### From fabric 3 cut

18 x 2  $\frac{1}{2}$ " x 4  $\frac{7}{8}$ " (you need to cut a 45° as in the diagram ♥♥)

#### From fabric 4 cut

63 x 2  $\frac{7}{8}$ " x 2  $\frac{7}{8}$ " cut in half diagonally once

#### From fabric 5 cut

18 x 2  $\frac{1}{2}$ " x 6  $\frac{7}{8}$ " (you need to cut a 45° as in the diagram ♥♥)

9 x 2  $\frac{7}{8}$ " x 2  $\frac{7}{8}$ " cut in half diagonally once

#### From fabric 6 cut

9 x 5  $\frac{1}{4}$ " x 5  $\frac{1}{4}$ " cut in half diagonally twice

18 x 2 $\frac{7}{8}$ " x 2 $\frac{7}{8}$ " cut in half diagonally once

18 x 2 $\frac{1}{2}$ " x 2 $\frac{1}{2}$ "

18 x 3 $\frac{3}{8}$ " x 3 $\frac{3}{8}$ "

### From fabric 7 cut

2 x 1 $\frac{1}{2}$ " x 36 $\frac{1}{2}$ " (sides - inner border)

2 x 1 $\frac{1}{2}$ " x 38 $\frac{1}{2}$ " (top & bottom - inner border)

### Making up the block



Block 1

This block is made up in four parts.

Use the block diagram as a guide for fabric placement.

Lay out all the fabric pieces for the block 1.

You will see that the bottom left and top right are the same. As then top left and bottom right are. I have put numbers on the diagram so this will be a bit like sewing with numbers. Take your square and stitch the strips to the side, press and then top and bottom.

Next make up the Flying Geese blocks by sewing the small triangles to the larger triangle. Sew one to the center square and the other add the square to the end. Now stitch to your work.

Make up the other side in the same way. Again it's all by numbers. Stitch the small triangle to the square and then the opposite sides. Next stitch the other small triangles to your work as in the diagram. Sew the

other side of this part of the block and then sew the two together. Now stitch in rows and then the rows together to complete the block. 9 blocks in total.

Lay out the blocks as in the main diagram and sew in rows, press the seams in the opposite way each time as this will when sew in your rows together.

### **Inner border**

Stitch the sides to the topper, press and then the top and bottom.

### **Outer border**

Sew the sides to the topper, press and then the top and bottom to complete your topper.

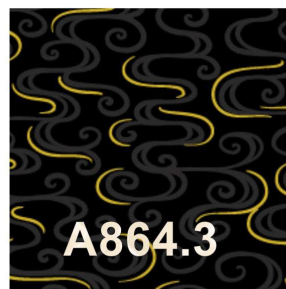
### **Quilting**

Sandwich the quilt top, wadding and backing together.

Quilt by hand or machine as desired. See what you can see in the fabric for ideas for quilting your quilt

### **Binding**

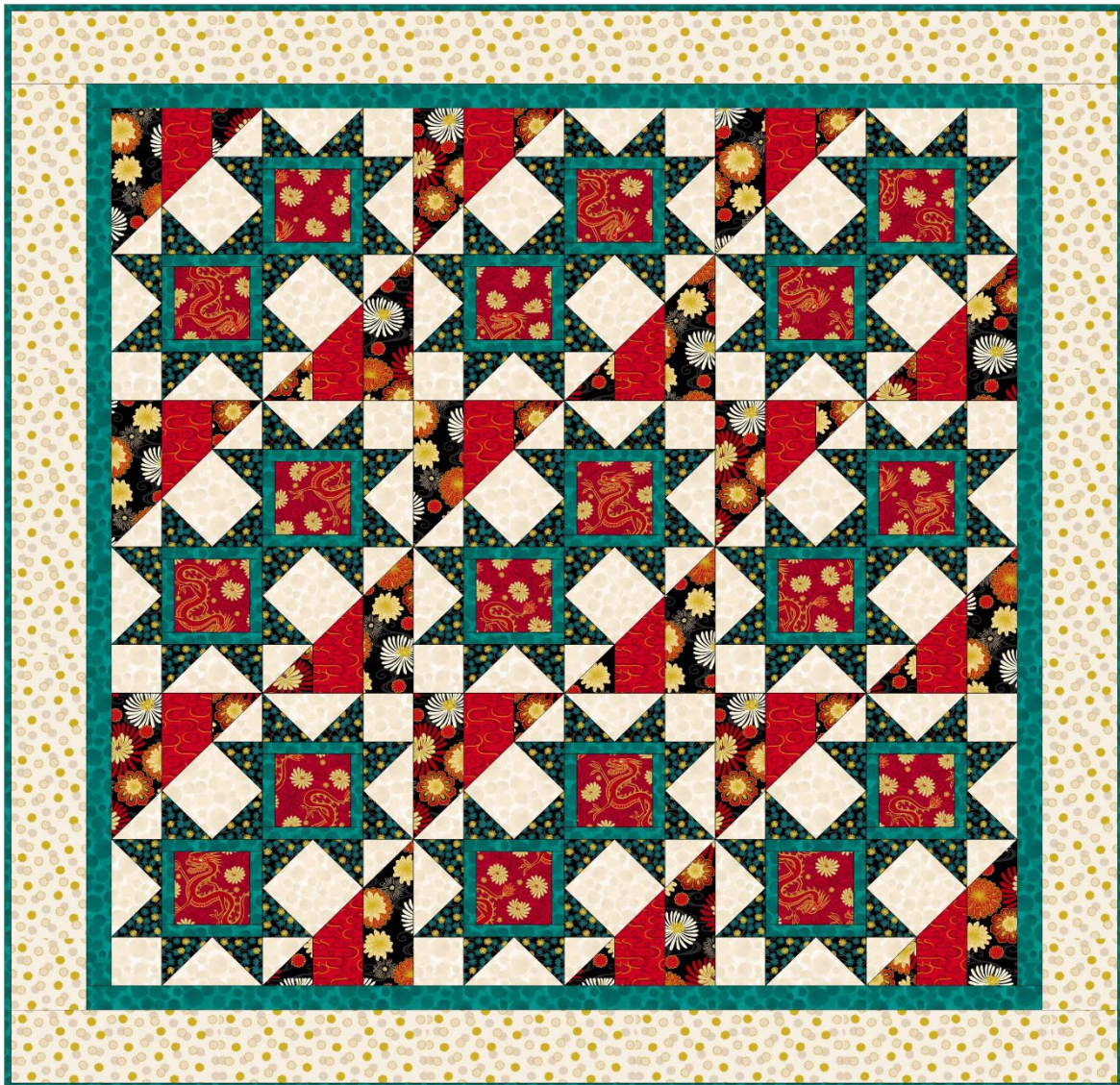
Use your favorite method from fabric 7 to bind the quilt.





Designed and made by Sally Ablett - Table topper 2

Size of runner 44" x 44" - unfinished block size 12½" x 12½"



## Main Diagram

### Requirements

Fabrics from the Year of the Dragon collection:

1. A862.2 - Dragon on red with gold metallic - fat $\frac{1}{4}$
2. A863.1 - Cream and gold cosmos with gold metallic -  $\frac{3}{4}$ yd - 70cm
3. A864.1 - Dragon swirl on red with gold metallic at - fat $\frac{1}{4}$
4. A865.3 - Dark jade and gold aster on black with gold metallic -  $\frac{1}{2}$ yd -  $\frac{1}{2}$ m
5. A866.3 - Black and red Year of the Dragon floral gold metallic -  $\frac{3}{8}$ yd - 40cm
6. BB148 - Cream -  $\frac{5}{8}$ yd - 60cm
7. BB017 - Hampshire green -  $\frac{3}{8}$ yd - 40cm

Wadding and backing 50" x 50"

**All measurements include  $\frac{1}{4}$ " seam allowances; press each seam as you go. You need to join your fabric to get the length for the border strips.**



cutting a 45° angle from top left to bottom right. ♥♥

### Cutting

#### From fabric 1 cut

18  $\frac{3}{2}$ " x 3  $\frac{1}{2}$ "

#### From fabric 2 cut

2 x 3  $\frac{1}{2}$ " x 38  $\frac{1}{2}$ " (outer border - sides)

2 x 3  $\frac{1}{2}$ " x 44  $\frac{1}{2}$ " (outer border - top & bottom)

#### From fabric 3 cut

18 x 2  $\frac{1}{2}$ " x 4  $\frac{7}{8}$ " (you need to cut a 45° as in the diagram ♥♥)

#### From fabric 4 cut

63 x 2  $\frac{7}{8}$ " x 2  $\frac{7}{8}$ " cut in half diagonally once

#### From fabric 5 cut

18 x 2  $\frac{1}{2}$ " x 6  $\frac{7}{8}$ " (you need to cut a 45° as in the diagram ♥♥)

9 x 2  $\frac{7}{8}$ " x 2  $\frac{7}{8}$ " cut in half diagonally once

#### From fabric 6 cut

9 x 5¼" x 5¼" cut in half diagonally twice

18 x 2⅞" x 2⅞" cut in half diagonally once

18 x 2½" x 2½"

18 x 3⅜" x 3⅜"

### From fabric 7 cut

2 x 1½" x 36½" (sides - inner border)

2 x 1½" x 38½" (top & bottom - inner border)

### Making up the block



Block 1

This block is made up in four parts.

Use the block diagram as a guide for fabric placement.

Lay out all the fabric pieces for the block 1.

You will see that the bottom left and top right are the same. As then top left and bottom right are. I have put numbers on the diagram so this will be a bit like sewing with numbers. Take your square and stitch the strips to the side, press and then top and bottom.

Next make up the Flying Geese blocks by sewing the small triangles to the larger triangle. Sew one to the center square and the other add the square to the end. Now stitch to your work.

Make up the other side in the same way. Again it's all by numbers. Stitch the small triangle to the square and then the opposite sides. Next stitch the other small triangles to your work as in the diagram. Sew the other side of this part of the block and then sew the two together. Now stitch in rows and then the rows together to complete the block. 9 blocks in total.

Lay out the blocks as in the main diagram and sew in rows, press the seams in the opposite way each time as this will when sew in your rows together.

### **Inner border**

Stitch the sides to the topper, press and then the top and bottom.

### **Outer border**

Sew the sides to the topper, press and then the top and bottom to complete your topper.

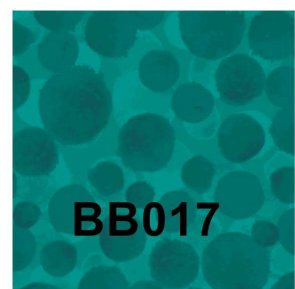
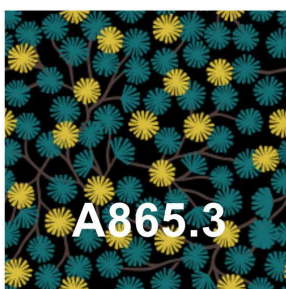
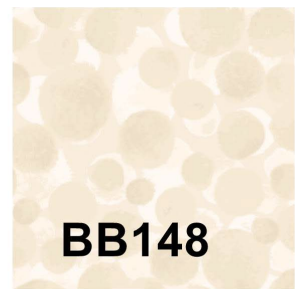
### **Quilting**

Sandwich the quilt top, wadding and backing together.

Quilt by hand or machine as desired. See what you can see in the fabric for ideas for quilting your quilt

### **Binding**

Use your favorite method from fabric 7 to bind the quilt.

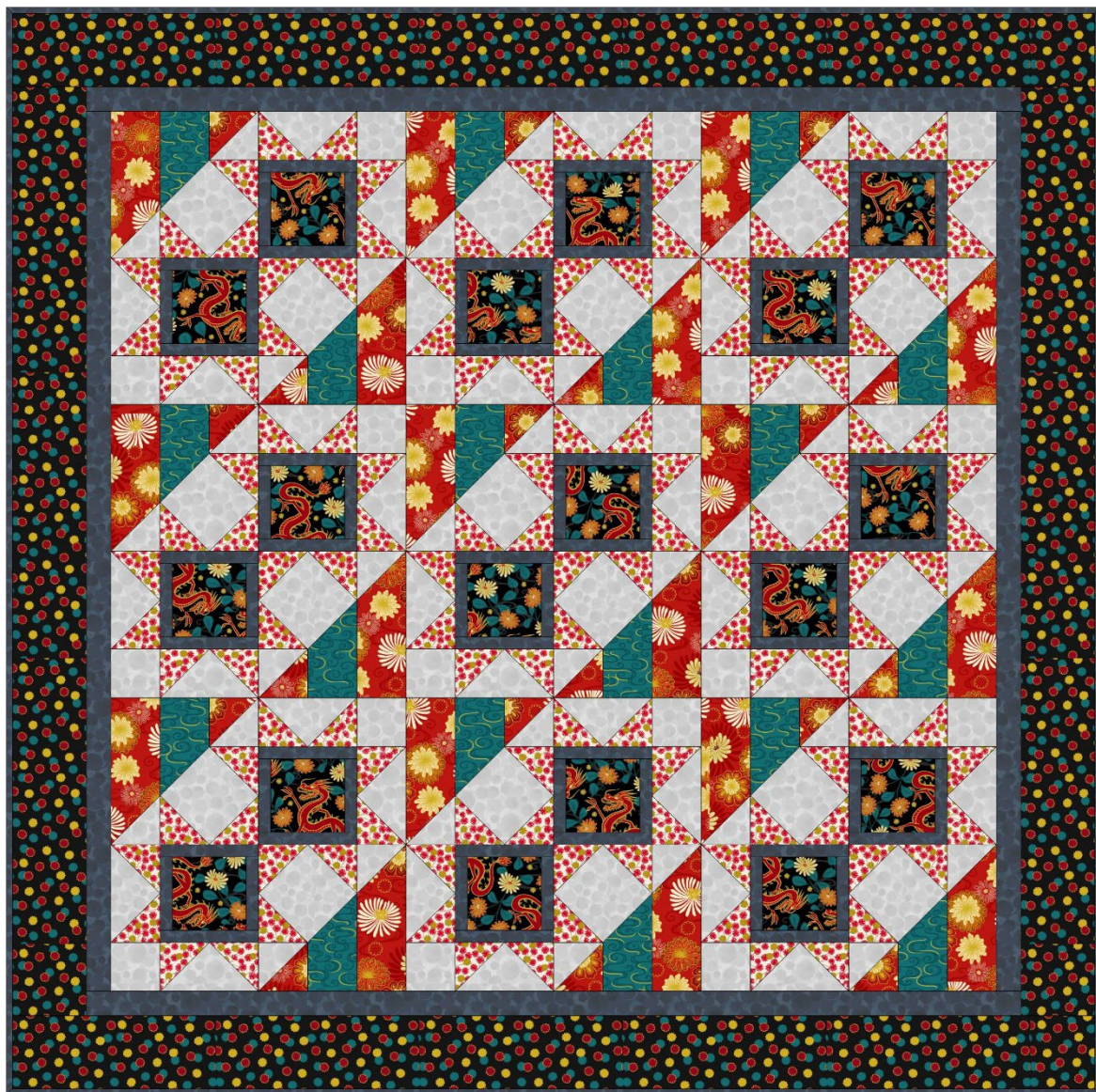






Designed and made by Sally Ablett - Table topper 3

Size of runner 44" x 44" - unfinished block size 12½" x 12½"



Main Diagram

## Requirements

Fabrics from the Year of the Dragon collection:

1. A862.3 - Dragon on black with gold metallic - fat $\frac{1}{4}$
2. A863.3 - Black and gold cosmos with gold metallic  $\frac{3}{4}$ yd - 70cm
3. A864.2 - Dragon swirl on dark jade with gold metallic - fat $\frac{1}{4}$
4. A865.1 - Red and gold aster on cream with gold metallic -  $\frac{1}{2}$ yd -  $\frac{1}{2}$ m
5. A866.2 - Red Year of the Dragon floral with gold metallic -  $\frac{3}{8}$ yd - 40cm
6. BB148 - Cream -  $\frac{5}{8}$ yd - 60cm
7. BB03 - Light grey -  $\frac{3}{8}$ yd - 40cm

Wadding and backing 50" x 50"

**All measurements include  $\frac{1}{4}$ " seam allowances; press each seam as you go. You need to join your fabric to get the length for the border strips.**



cutting a 45° angle from top left to bottom right. ♥♥

### Cutting

#### From fabric 1 cut

18  $3\frac{1}{2}$ " x  $3\frac{1}{2}$ "

#### From fabric 2 cut

2 x  $3\frac{1}{2}$ " x  $38\frac{1}{2}$ " (outer border - sides)

2 x  $3\frac{1}{2}$ " x  $44\frac{1}{2}$ " (outer border - top & bottom)

#### From fabric 3 cut

18 x  $2\frac{1}{2}$ " x  $4\frac{7}{8}$ " (you need to cut a 45° as in the diagram ♥♥)

#### From fabric 4 cut

63 x  $2\frac{7}{8}$ " x  $2\frac{7}{8}$ " cut in half diagonally once

#### From fabric 5 cut

18 x  $2\frac{1}{2}$ " x  $6\frac{7}{8}$ " (you need to cut a 45° as in the diagram ♥♥)

9 x  $2\frac{7}{8}$ " x  $2\frac{7}{8}$ " cut in half diagonally once

#### From fabric 6 cut

9 x  $5\frac{1}{4}$ " x  $5\frac{1}{4}$ " cut in half diagonally twice

18 x 2<sup>7</sup>/<sub>8</sub>" x 2<sup>7</sup>/<sub>8</sub>" cut in half diagonally once

18 x 2<sup>1</sup>/<sub>2</sub>" x 2<sup>1</sup>/<sub>2</sub>"

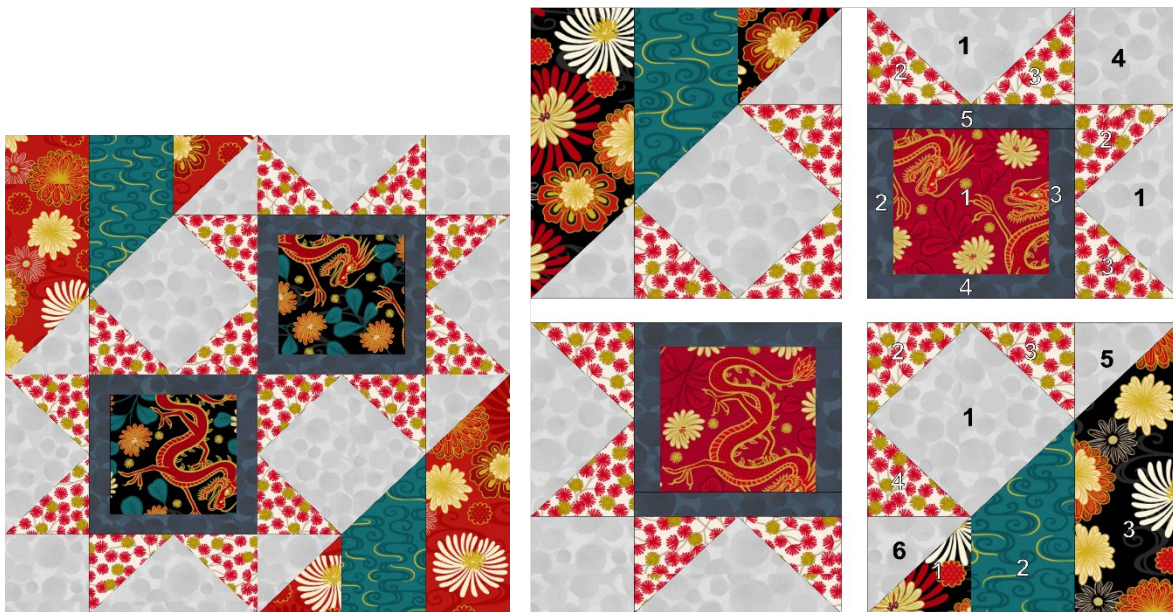
18 x 3<sup>3</sup>/<sub>8</sub>" x 3<sup>3</sup>/<sub>8</sub>"

### From fabric 7 cut

2 x 1<sup>1</sup>/<sub>2</sub>" x 36<sup>1</sup>/<sub>2</sub>" (sides - inner border)

2 x 1<sup>1</sup>/<sub>2</sub>" x 38<sup>1</sup>/<sub>2</sub>" (top & bottom - inner border)

### Making up the block



Block 1

This block is made up in four parts.

Use the block diagram as a guide for fabric placement.

Lay out all the fabric pieces for the block 1.

You will see that the bottom left and top right are the same. As then top left and bottom right are. I have put numbers on the diagram so this will be a bit like sewing with numbers. Take your square and stitch the strips to the side, press and then top and bottom.

Next make up the Flying Geese blocks by sewing the small triangles to the larger triangle. Sew one to the center square and the other add the square to the end. Now stitch to your work.

Make up the other side in the same way. Again it's all by numbers. Stitch the small triangle to the square and then the opposite sides. Next

stitch the other small triangles to your work as in the diagram. Sew the other side of this part of the block and then sew the two together. Now stitch in rows and then the rows together to complete the block. 9 blocks in total.

Lay out the blocks as in the main diagram and sew in rows, press the seams in the opposite way each time as this will when sewin your rows together.

### **Inner border**

Stitch the sides to the topper, press and then the top and bottom.

### **Outer border**

Sew the sides to the topper, press and then the top and bottom to complete your topper.

### **Quilting**

Sandwich the quilt top, wadding and backing together.

Quilt by hand or machine as desired. See what you can see in the fabric for ideas for quilting your quilt

### **Binding**

Use your favorite method from fabric 7 to bind the quilt.

