



Designed and made by Sally Ablett - Quilt 1

Size of quilt 66" x 66" - unfinished block sizes 6½" x 6½" - 4½" x 6½" - 2½" x 4½"



Main Diagram

Fabrics from the Cranborne Chase collection:

1. A834.1 - Cranborne Chase on dark cream - $\frac{3}{8}$ yd - 40cm
2. A834.3 - Cranborne Chase on light oak - $\frac{3}{8}$ yd - 40cm
3. A835.2 - Breezy scroll on slate blue - fat $\frac{1}{4}$
4. A835.3 - Breezy scroll on truffle - fat $\frac{1}{4}$
5. A836.1 - Oak leaves on light slate - fat $\frac{1}{4}$
6. A836.2 - Oak leaves on light acorn - fat $\frac{1}{4}$
7. A837.2 - Berry on light slate - $1\frac{1}{4}$ yds - $1\frac{1}{4}$ m
8. A837.3 - Berry on warm truffle - $\frac{7}{8}$ yd - 90cm
9. A838.1 - Cranborne scroll on natural - fat $\frac{1}{4}$
10. A838.3 - Cranborne scroll on slate blue - fat $\frac{1}{4}$
11. BB01 - White - $2\frac{3}{8}$ yd - 2.20m
12. BB024 - Chocolate - $\frac{1}{2}$ yd - $\frac{1}{2}$ m

Wadding and backing 72" x 72"

All measurements include $\frac{1}{4}$ " seam allowances; press each seam as you go. You need to join your fabric to get the length for the border strips.

Cutting

From each of the fabrics 1 and 2 you need to cut

8 x $5\frac{1}{2}$ " x $5\frac{1}{2}$ "

From fabric 3 cut

7 x $5\frac{1}{4}$ " x $5\frac{1}{4}$ " cut in half diagonally twice (outer border)

From fabric 4 cut

6 x $5\frac{1}{4}$ " x $5\frac{1}{4}$ " cut in half diagonally twice (outer border)

4 x $2\frac{1}{2}$ " x $2\frac{1}{2}$ " (corners for outer border)

From each of the fabric 5 and 6 you need to cut

20 x $2\frac{1}{2}$ " x $4\frac{1}{2}$ "

From fabric 7 cut

48 x $2\frac{7}{8}$ " x $2\frac{7}{8}$ " cut in half diagonally once

From fabric 8 cut

52 x $2\frac{7}{8}$ " x $2\frac{7}{8}$ " cut in half diagonally once

From fabric 9 cut

13 x 4½" x 4½"

From fabric 10

12 x 4½" x 4½"

From fabric 11 cut

2 x 2½" x 52½" Inner border top & bottom

2 x 2½" x 48½" inner border sides

37 x 5¼" x 5¼" cut in half diagonally twice (for blocks and outer border)

16 x 2½" x 6½"

4 x 2⅞" x 2⅞" cut in half diagonally once

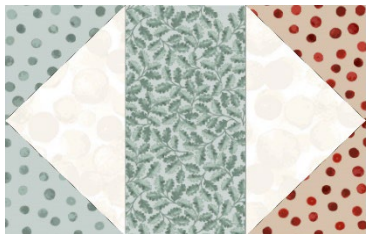
4 x 2½" x 2½"

From fabric 12 cut

32 x 1½" x 5½" sides

32 x 1½" x 6½" top & bottom

Making up the blocks



1



2



3



4

Block 1. You have two Flying Gees blocks at each end on this block. Stitch a small triangle to each side of the larger triangle to complete the block. Look at the colour way on each of the blocks as in the main diagram. Lay out all three pieces and sew in rows. 40 blocks in total.

Block 2 and 3 are made up in the same way. Sew the sides strips to the square, press and then the top and bottom. 8 of each colour way.

Block 4 – Flying Geese block make up as before in block 1. Two colour ways for this. 12 of fabric 7 and 8 of fabric 8.

Making up the centre of the quilt.

Lay out all your pieces for the quilt as in the main diagram. The top row will be a background square, Flying Geese and 2½" x 6½" strips. Stitch the row together. Next row will be squares and block 1 again look at the colour lay out before sewing. Keep working down the rows, press the seams in the opposite way each time as this help when stitching the rows together.

Stitch all your rows together to complete the quilt centre.

Inner border

Sew the side strips to the quilt, press and then the top and bottom.

Outer border

Lay out the small triangles as in the main diagram. Join them together with a small triangle at each end. On the top and bottom strip add a square to each end. Sew the sides to the quilt, press and then the top and bottom to complete the quilt top.

Quilting and binding

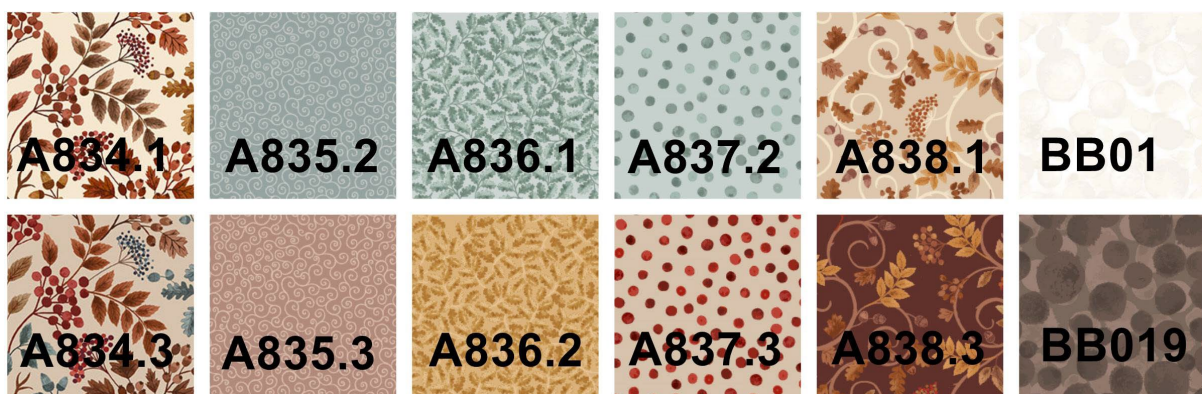
Sandwich the quilt top, wadding and backing together.

Quilt by hand or machine a pattern to match the quilt.

Trim the backing and wadding to size of quilt.

Binding

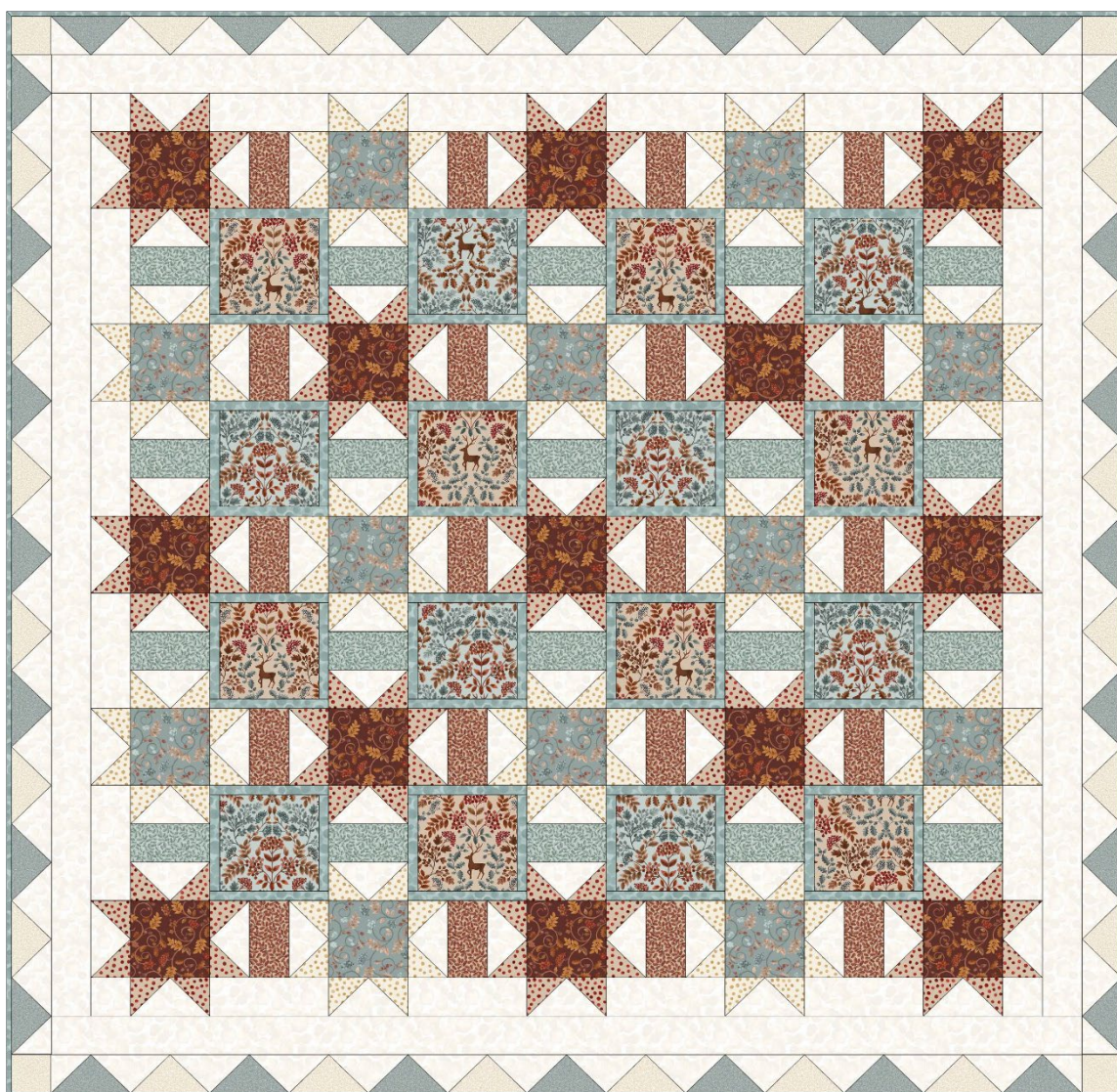
Use your favorite method from fabric 12 for binding the quilt.





Designed and made by Sally Ablett - Quilt 2

Size of quilt 66" x 66" - unfinished block sizes 6½" x 6½" - 4½" x 6½" - 2½" x 4½"



Main Diagram

Fabrics from the Cranborne Chase collection:

1. A834.2 - Cranborne Chase on light slate - $\frac{3}{8}$ yd - 40cm
2. A834.3 - Cranborne Chase on light oak - $\frac{3}{8}$ yd - 40cm
3. A835.1 - Breezy scroll on cream - fat $\frac{1}{4}$
4. A835.2 - Breezy scroll on slate blue - fat $\frac{1}{4}$
5. A836.1 - Oak leaves on light slate - fat $\frac{1}{4}$
6. A836.3 - Oak leaves on light oak - fat $\frac{1}{4}$
7. A837.3 - Berry on warm truffle 1 $\frac{1}{4}$ yds - 1 $\frac{1}{4}$ m
8. A837.1 - Berry on rustic cream - $\frac{7}{8}$ yd - 90cm
9. A838.2 - Cranborne scroll on conker - fat $\frac{1}{4}$
10. A838.3 - Cranborne scroll on slate blue - fat $\frac{1}{4}$
11. BB01 - White - 2 $\frac{3}{8}$ yd - 2.20m
12. BB09 - Studland seafoam - $\frac{1}{2}$ yd - $\frac{1}{2}$ m

Wadding and backing 72" x 72"

All measurements include $\frac{1}{4}$ " seam allowances; press each seam as you go. You need to join your fabric to get the length for the border strips.

Cutting

From each of the fabrics 1 and 2 you need to cut

8 x 5 $\frac{1}{2}$ " x 5 $\frac{1}{2}$ "

From fabric 3 cut

7 x 5 $\frac{1}{4}$ " x 5 $\frac{1}{4}$ " cut in half diagonally twice (outer border)

From fabric 4 cut

6 x 5 $\frac{1}{4}$ " x 5 $\frac{1}{4}$ " cut in half diagonally twice (outer border)

4 x 2 $\frac{1}{2}$ " x 2 $\frac{1}{2}$ " (corners for outer border)

From each of the fabric 5 and 6 you need to cut

20 x 2 $\frac{1}{2}$ " x 4 $\frac{1}{2}$ "

From fabric 7 cut

48 x 2 $\frac{7}{8}$ " x 2 $\frac{7}{8}$ " cut in half diagonally once

From fabric 8 cut

52 x 2 $\frac{7}{8}$ " x 2 $\frac{7}{8}$ " cut in half diagonally once

From fabric 9 cut

13 x 4½" x 4½"

From fabric 10

12 x 4½" x 4½"

From fabric 11 cut

2 x 2½" x 52½" Inner border top & bottom

2 x 2½" x 48½" inner border sides

37 x 5¼" x 5¼" cut in half diagonally twice (for blocks and outer border)

16 x 2½" x 6½"

4 x 2⅞" x 2⅞" cut in half diagonally once

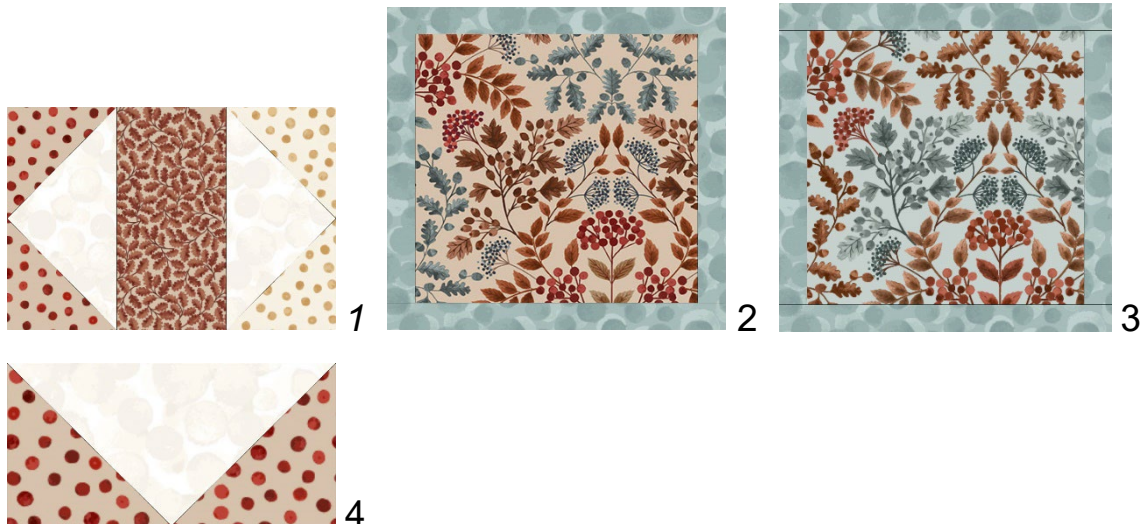
4 x 2½" x 2½"

From fabric 12 cut

32 x 1½" x 5½" sides

32 x 1½" x 6½" top & bottom

Making up the blocks



Block 1. You have two Flying Gees blocks at each end on this block. Stitch a small triangle to each side of the larger triangle to complete the block. Look at the colour way on each of the blocks as in the main diagram. Lay out all three pieces and sew in rows. 40 blocks in total.

Block 2 and 3 are made up in the same way. Sew the sides strips to the square, press and then the top and bottom. 8 of each colour way.

Block 4 – Flying Geese block make up as before in block 1. Two colour ways for this. 12 of fabric 7 and 8 of fabric 8.

Making up the centre of the quilt.

Lay out all your pieces for the quilt as in the main diagram. The top row will be a background square, Flying Geese and 2½" x 6½" strips. Stitch the row together. Next row will be squares and block 1 again look at the colour lay out before sewing. Keep working down the rows, press the seams in the opposite way each time as this help when stitching the rows together.

Stitch all your rows together to complete the quilt centre.

Inner border

Sew the side strips to the quilt, press and then the top and bottom.

Outer border

Lay out the small triangles as in the main diagram. Join them together with a small triangle at each end. On the top and bottom strip add a square to each end. Sew the sides to the quilt, press and then the top and bottom to complete the quilt top.

Quilting and binding

Sandwich the quilt top, wadding and backing together.

Quilt by hand or machine a pattern to match the quilt.

Trim the backing and wadding to size of quilt.

Binding

Use your favorite method from fabric 12 for binding the quilt.

