



Designed and made by Sally Ablett - Quilt 1

Size of quilt 62" x 62" - unfinished block size 10½" x 10½" - 6½" x 6½"



Main Diagram

Fabrics from Disco collection

Requirements

1. A839.1 - Multi disco balls with silver metallic - $\frac{1}{2}$ yd - $\frac{1}{2}$ m
2. A839.3 - Silver disco balls with silver metallic - $\frac{1}{2}$ yd - $\frac{1}{2}$ m
3. A840.1 - Blue glitter with silver metallic - $\frac{1}{2}$ yd - $\frac{1}{2}$ m
4. A840.3 - Silver glitter with gold metallic - $\frac{1}{2}$ yd - $\frac{1}{2}$ m
5. A841.1 - Blue big glitter with silver metallic - $\frac{1}{2}$ yd - $\frac{1}{2}$ m
6. A841.2 - Multi big glitter with gold metallic - $\frac{1}{2}$ yd - $\frac{1}{2}$ m
7. A842.1 - Pink and gold disco dots with gold metallic - $\frac{1}{2}$ yd - $\frac{1}{2}$ m
8. A842.2 - Blue disco dots with silver metallic - $\frac{1}{2}$ yd - $\frac{1}{2}$ m
9. A843.1 - Multi disco rainbow with gold metallic - $\frac{1}{2}$ yd - $\frac{1}{2}$ m
10. A843.2 - Blue disco rainbows with silver metallic - $\frac{1}{2}$ yd - $\frac{1}{2}$ m
11. BB01 - White - $2\frac{3}{4}$ yd - 2.70m

Wadding and backing 66" x 66"

All measurements include $\frac{1}{4}$ " seam allowances; press each seam as you go.

You need to join your fabric to get the length for the border strips.

Cutting

From fabric 1 cut

3 x $6\frac{7}{8}$ " x $6\frac{7}{8}$ " cut in half diagonally once (middled border)

8 x $5\frac{1}{2}$ " x $5\frac{1}{2}$ " (block 2)

4 x $1\frac{1}{2}$ " x $1\frac{1}{2}$ " (sashing)

From fabric 2 cut

3 x $6\frac{7}{8}$ " x $6\frac{7}{8}$ " cut in half diagonally once (middled border)

8 x $5\frac{1}{2}$ " x $5\frac{1}{2}$ " (block 1)

5 x $1\frac{1}{2}$ " x $1\frac{1}{2}$ " (sashing)

From each of the fabric 3, 4, 5, 6, 7, 8, 9 and 10 you need to cut

1 x $6\frac{7}{8}$ " x $6\frac{7}{8}$ " cut in half diagonally once (middled border)

1 x $5\frac{1}{8}$ " x $5\frac{1}{8}$ " cut in half diagonally once (middle border)

8 x $2\frac{1}{2}$ " x $5\frac{1}{2}$ "

8 x $2\frac{1}{2}$ " x $3\frac{1}{2}$ "

From fabric 11 cut

2 x 1½" x 62½" top & bottom (outer border)

2 x 1½" x 60½" sides (outer border)

2 x 3" x 48½" top & bottom (inner border)

2 x 3" x 43½" sides (inner border)

4 x 7¼" x 7¼" cut in half diagonally twice (middle border)

6 x 6⅞" x 6⅞" cut in half diagonally once (middle border)

4 x 6½" x 12½" (middle border)

24 x 1½" x 10½" sashing strips

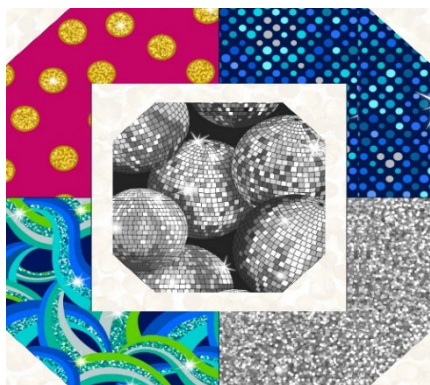
64 x 2" x 2" for both blocks

64 x 1½" x 1½" for both blocks

32 x 1" x 6½" top & bottom for both blocks

32 x 1" x 5½" sides for both blocks

Making up the blocks.

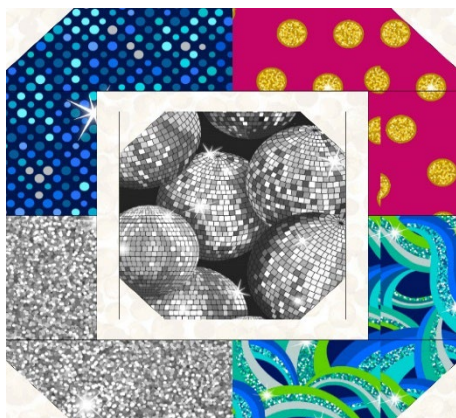


Block 1

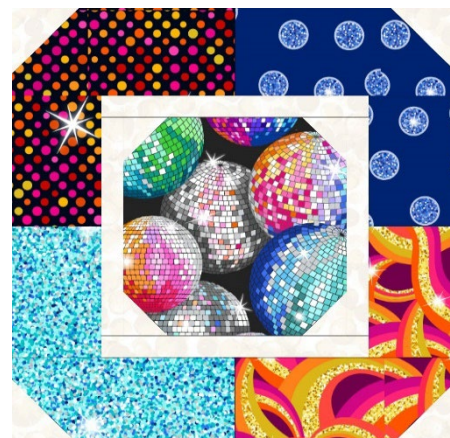


Block 2

You will see that both blocks are made up in the same way, but on rows 2 and 4 you will flip the fabrics.

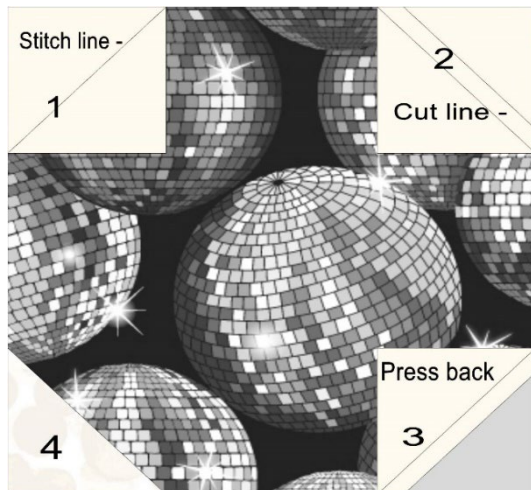


1 A



2 B

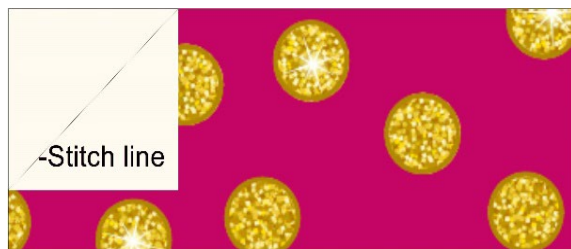
Lay out the fabric pieces for block 1. Starting with the center.



Draw a diagonally line on the wrong side of the background fabric piece $1\frac{1}{2}$ " x $1\frac{1}{2}$ ". Place into the corner and sew into place.

Trim $\frac{1}{4}$ " seam away from stitch line. Do the same to all four corners.

Add the side strips to your work, press back and then the top and bottom.



Next the outer part of the block. Do the same with the small squares as before with the center part of the block. This time it's the 2" x 2" you will use.

Look at the diagram of block 1 as to see which corner to place the square. Do all four corners.

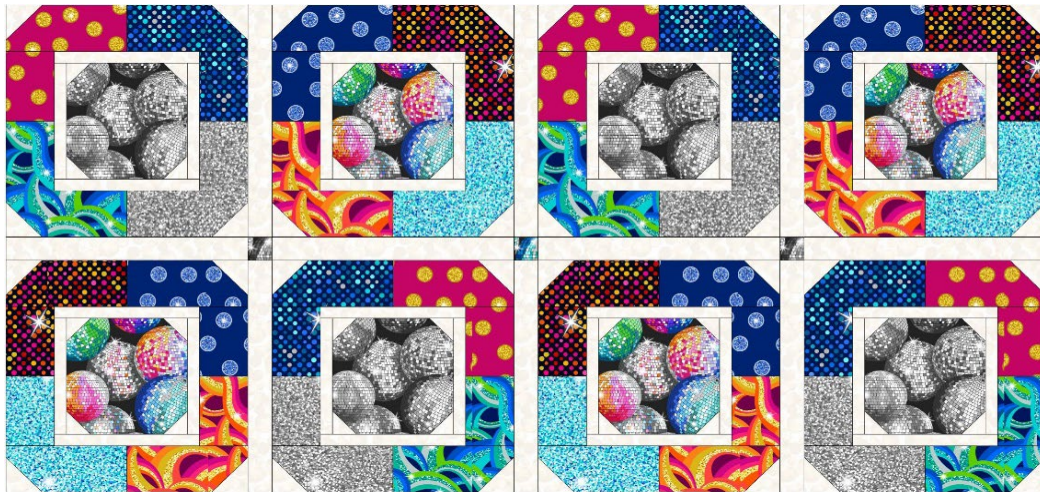
Next you need to sew the side and top and bottom pieces of the block together before make up the block.

Lay out as in block diagram 1 and sew in rows and then the rows together to complete the block.

For block 1 you need 4 blocks and block 1 A this is the flip one again you need 4 blocks in total.

For block 2 you will make up as block 1 and block 1 A and again the same number of blocks.

Making up the center.



Lay out the blocks, sashing and squares as in the main diagram.

Sew the top rows with blocks and sashing, press this row to the right.

On the next row press the seam in the opposite. So, each row is pressed in the opposite way. This will help when stitching your rows together to complete the quilt center.

Inner border

You need the background fabric strips for the inner border.

Take the side strip and stitch to the quilt, press back.

Next sew the top and bottom.

Middle border.



Half square triangle block



Y block

Place the fabric pieces out as in the main diagram.

The half square triangle blocks are all made up in the same way.

Sew the two large triangles together to make a square. 12 in total for the half square triangles.

Next the other blocks you will sew the two same triangles together and then stitch the two larger triangles together to make a square.

Lay out the blocks and 6½" x 12½" pieces as in the main diagram.

Stitch three blocks each side of the center strip of background fabric, but on the top and bottom add the corner squares to each end.

Stitch the sides to the quilt, press back then the top and bottom.

Outer border

Using the background fabric strips stitch the sides to the quilt, press back and then the top and bottom to complete the quilt top.

Quilting and binding

Sandwich the quilt top, wadding and backing together.

Quilt by hand or machine a pattern to match the quilt.

Trim the backing and wadding to size of quilt.

Binding

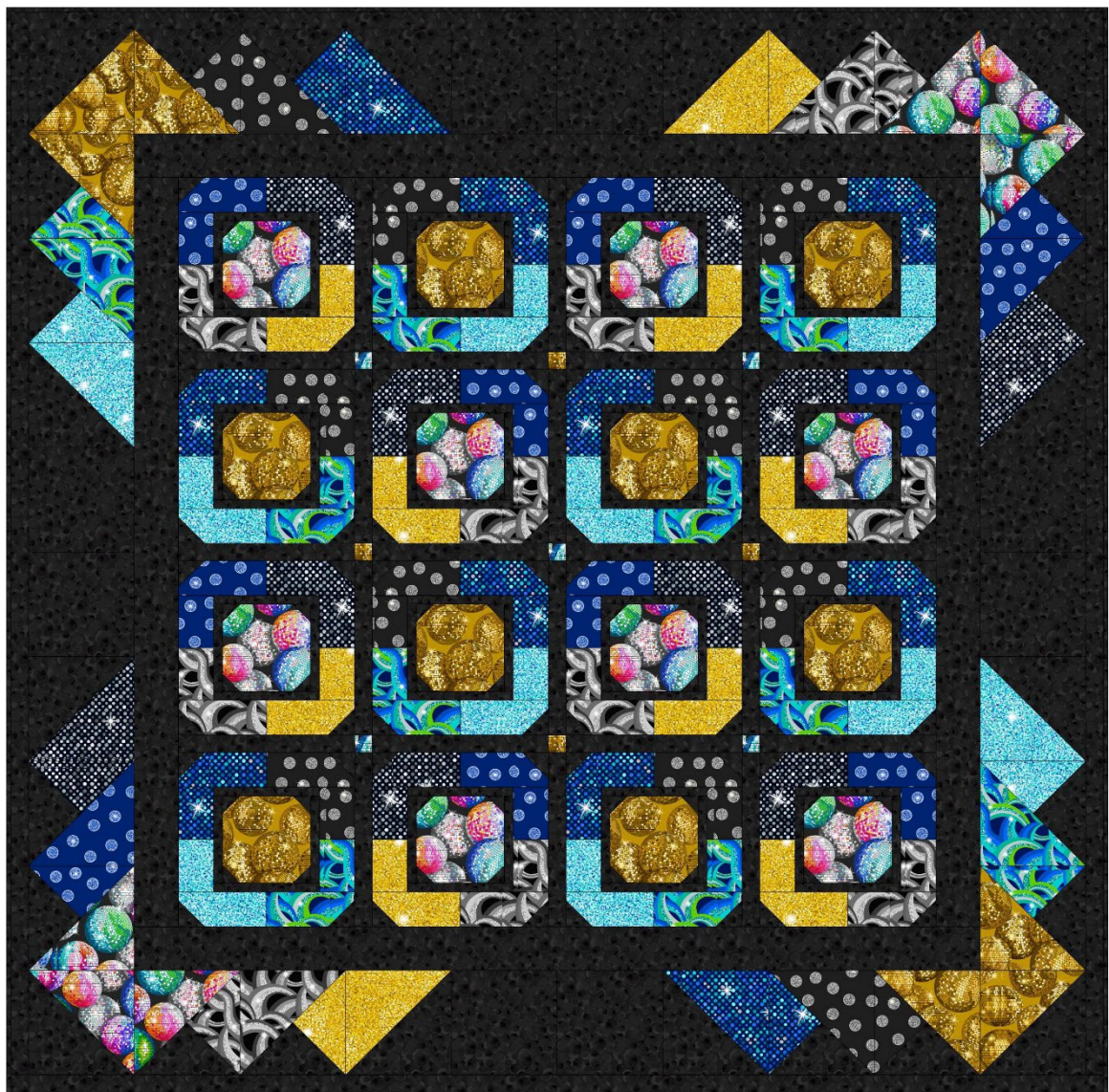
Use your favourite method from fabric 11 for binding the quilt.





Designed and made by Sally Ablett - Quilt 2

Size of quilt 62" x 62" - unfinished block size 10½" x 10½" - 6½" x 6½"



Main Diagram

Fabrics from Disco collection

Requirements

1. A839.1 - Multi disco balls with silver metallic - ½yd - ½m
2. A839.2 - Gold disco balls with gold metallic - ½yd - ½m
3. A840.1 - Blue glitter with silver metallic - ½yd - ½m
4. A840.2 - Gold glitter with gold metallic - ½yd - ½m
5. A841.1 - Blue big glitter with silver metallic - ½yd - ½m
6. A841.3 - Black and grey big glitter with silver metallic - ½yd - ½m
7. A842.2 - Blue disco dots with silver metallic - ½yd - ½m
8. A842.3 - Black disco dots with silver metallic - ½yd - ½m
9. A843.2 - Blue disco rainbows with silver metallic - ½yd - ½m
10. A843.3 - Black and grey disco rainbows - silver metallic - ½m
11. BB30 - Black - 2¾yd - 2.70m

Wadding and backing 66" x 66"

All measurements include ¼" seam allowances; press each seam as you go.

You need to join your fabric to get the length for the border strips.

Cutting

From fabric 1 cut

3 x 6⅞" x 6⅞" cut in half diagonally once (middled border)

8 x 5½" x 5½" (block 2)

4 x 1½" x 1½" (sashing)

From fabric 2 cut

3 x 6⅞" x 6⅞" cut in half diagonally once (middled border)

8 x 5½" x 5½" (block 1)

5 x 1½" x 1½" (sashing)

From each of the fabric 3, 4, 5, 6, 7, 8, 9 and 10 you need to cut

1 x 6⅞" x 6⅞" cut in half diagonally once (middled border)

1 x 5⅞" x 5⅞" cut in half diagonally once (middle border)

8 x 2½" x 5½"

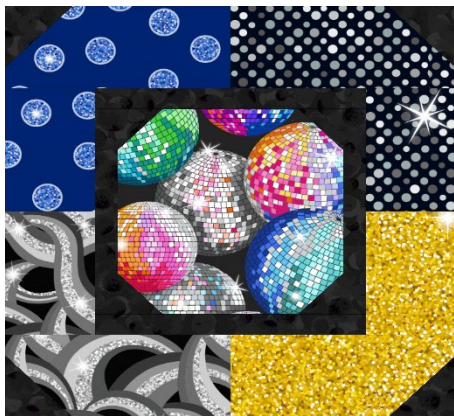
8 x 2½" x 3½"

From fabric 11 cut

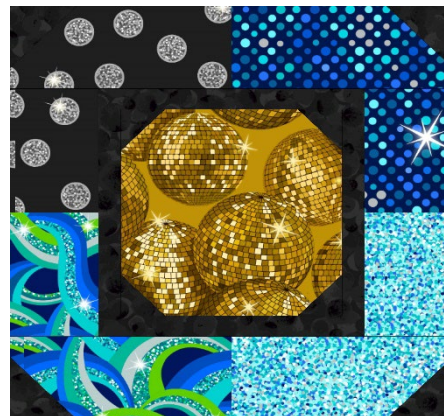
2 x 1½" x 62½" top & bottom (outer border)

2 x 1½" x 60½" sides (outer border)
 2 x 3" x 48½" top & bottom (inner border)
 2 x 3" x 43½" sides (inner border)
 4 x 7¼" x 7¼" cut in half diagonally twice (middle border)
 6 x 6⅞" x 6⅞" cut in half diagonally once (middle border)
 4 x 6½" x 12½" (middle border)
 24 x 1½" x 10½" sashing strips
 64 x 2" x 2" for both blocks
 64 x 1½" x 1½" for both blocks
 32 x 1" x 6½" top & bottom for both blocks
 32 x 1" x 5½" sides for both blocks

Making up the blocks.



Block 1

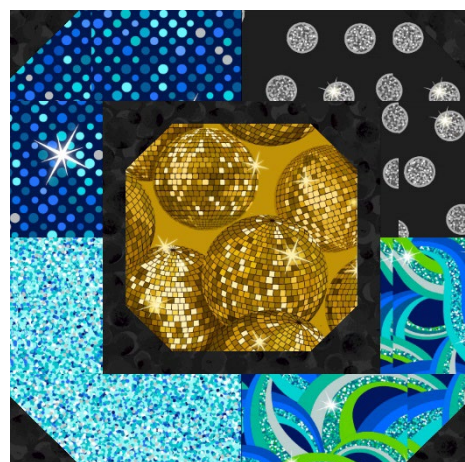


Block 2

You will see that both blocks are made up in the same way, but on rows 2 and 4 you will flip the fabrics.

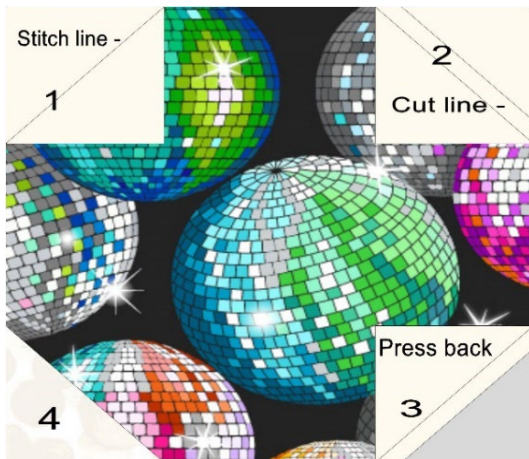


1



2

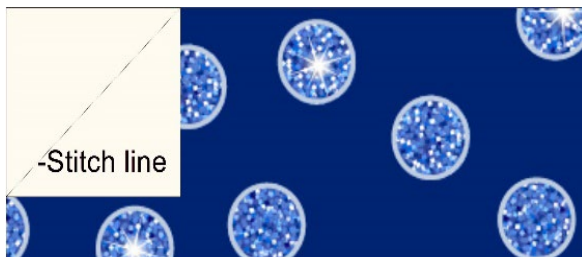
Lay out the fabric pieces for block 1. Starting with the center.



Draw a diagonally line on the wrong side of the background fabric piece $1\frac{1}{2}$ " x $1\frac{1}{2}$ ". Place into the corner and sew into place.

Trim $\frac{1}{4}$ " seam away from stitch line. Do the same to all four corners.

Add the side strips to your work, press back and then the top and bottom.



Next the outer part of the block. Do the same with the small squares as before with the center part of the block. This time it's the 2" x 2" you will use.

Look at the diagram of block 1 as to see which corner to place the square. Do all four corners.

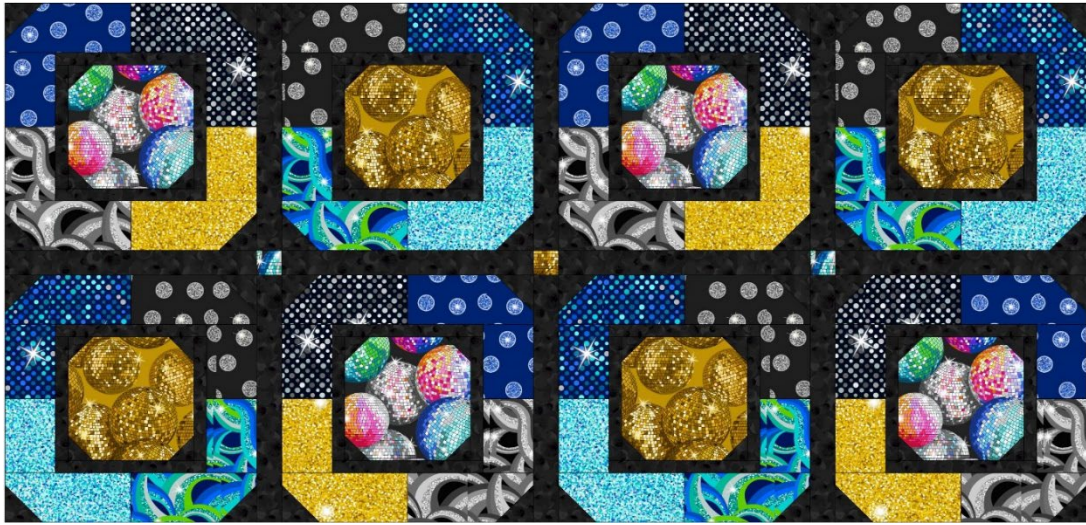
Next you need to sew the side and top and bottom pieces of the block together before make up the block.

Lay out as in block diagram 1 and sew in rows and then the rows together to complete the block.

For block 1 you need 4 blocks and block 1 A this is the flip one again you need 4 blocks in total.

For block 2 you will make up as block 1 and block 1 A and again the same number of blocks.

Making up the center.



Lay out the blocks, sashing and squares as in the main diagram.

Sew the top rows with blocks and sashing, press this row to the right.

On the next row press the seam in the opposite. So, each row is pressed in the opposite way. This will help when stitching your rows together to complete the quilt center.

Inner border

You need the background fabric strips for the inner border.

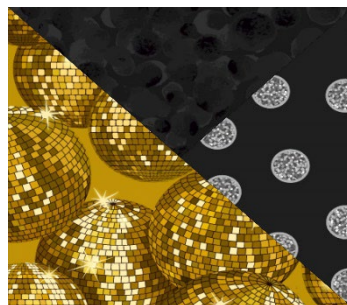
Take the side strip and stitch to the quilt, press back.

Next sew the top and bottom.

Middle border.



Half square triangle block



Y block

Place the fabric pieces out as in the main diagram.

The half square triangle blocks are all made up in the same way.

Sew the two large triangles together to make a square. 12 in total for the half square triangles.

Next the other blocks you will sew the two same triangles together and then stitch the two larger triangles together to make a square.

Lay out the blocks and 6½" x 12½" pieces as in the main diagram.

Stitch three blocks each side of the center strip of background fabric, but on the top and bottom add the corner squares to each end.

Stitch the sides to the quilt, press back then the top and bottom.

Outer border

Using the background fabric strips stitch the sides to the quilt, press back and then the top and bottom to complete the quilt top.

Quilting and binding

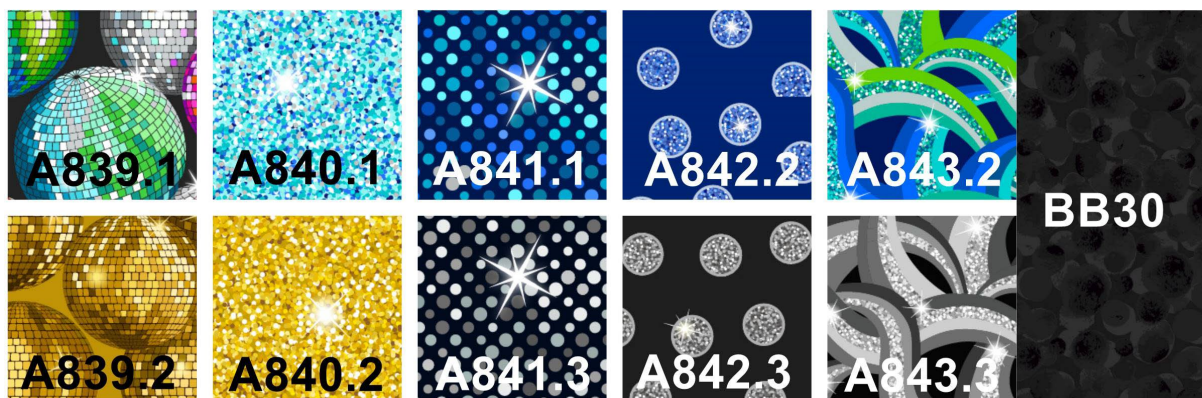
Sandwich the quilt top, wadding and backing together.

Quilt by hand or machine a pattern to match the quilt.

Trim the backing and wadding to size of quilt.

Binding

Use your favourite method from fabric 11 for binding the quilt.





Sally Ablett © 2024