



Designed and made by Sally Ablett - Throw 1

Size of runner 46" x 46" - unfinished block size 8½" x 8½"



Main Diagram

Requirements

Fabrics from the Grandma's Quilt collection

1. A774.1 - Ditzzy floral on cream - $\frac{3}{8}$ yd - 40cm
2. A775.3 - Flower dot red - fat $\frac{1}{4}$
3. A776.2 - Small flowers on blue - $\frac{3}{8}$ yd
4. A777.2 - Heart gingham blue - fat $\frac{1}{4}$
5. A778.3 - Flower chains on dark blue - $\frac{3}{8}$ yd - 40cm
6. BB01 - White - 1yd - 1m
7. BB29 - Indigo - 1yd - 1m

Wadding and backing 50" x 50"

Cutting

From fabric 1 cut

13 x 4 $\frac{1}{2}$ " x 4 $\frac{1}{2}$ " (block 1)

From fabric 2 cut

52 x 2 $\frac{7}{8}$ " x 2 $\frac{7}{8}$ " cut in half diagonally once (block 1)

From fabric 3 cut

12 x 5 $\frac{1}{4}$ " x 5 $\frac{1}{4}$ " cut in half diagonally twice (block 2)

From fabric 4 cut

48 x 2 $\frac{1}{2}$ " x 2 $\frac{1}{2}$ " (block 2)

From fabric 5 cut

12 x 5 $\frac{1}{4}$ " x 5 $\frac{1}{4}$ " cut in half diagonally twice (block 2)

From fabric 6 cut

13 x 5 $\frac{1}{4}$ " x 5 $\frac{1}{4}$ " cut in half diagonally twice (block 1)

48 x 2 $\frac{7}{8}$ " x 2 $\frac{7}{8}$ " cut in half diagonally once (block 2)

2 x 1" x 42 $\frac{1}{2}$ " top & bottom (inner border)

2 x 1 $\frac{1}{2}$ " x 40 $\frac{1}{2}$ " sides (inner border)

4 x 2 $\frac{1}{2}$ " x 2 $\frac{1}{2}$ " (corners on outer border)

From fabric 7 cut

4 x 2 $\frac{1}{2}$ " x 42 $\frac{1}{2}$ " (outer border)

52 x 2 $\frac{1}{2}$ " x 2 $\frac{1}{2}$ " (block 1)

Blocks



Block 1 diagram



Block 2 diagram

Block 1.

Lay out the fabric pieces for the block as in the diagram.

Sew a small triangle on the long side to each side of the larger triangle on the short side. This is a Flying Geese block.

Lay out the block pieces. Stitch the rows together and then sew your rows to complete the block. Sew 13 in total.

Block 2.

You have a Flying Geese block again, so sew as before. The center you will stitch two of the triangles together to make a larger triangle. Do this to the other set. Stitch the two triangles together to make a square.

Place the pieces as in the diagram for block 2. Stitch in rows and then sew the rows together to complete the block. Sew 12 in total.

Making up quilt center

Lay out the blocks as in the main diagram.

Sewing in rows. If you press your seams to the left and then on the next row to the right. This will help when sewing the rows together.

5 blocks by 5 blocks.

Borders

Inner border

Stitch the sides $1\frac{1}{2}$ " x $40\frac{1}{2}$ " to the throw press back and then the top and bottom $1\frac{1}{2}$ " x $42\frac{1}{2}$ ".

Outer border

Take 2 strips $2\frac{1}{2}$ " x $42\frac{1}{2}$ ". Stitch to the sides of the throw, press back.

On the other 2 strips add a square to each end.

Sew to the top and bottom to the throw to complete.

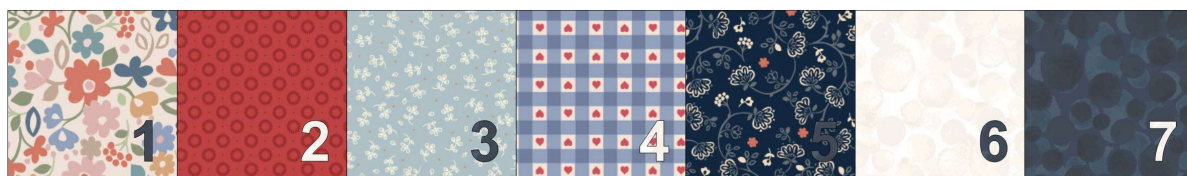
Quilting and binding

Sandwich the quilt top, wadding and backing together.

Quilt by hand or machine as desired.

Trim the backing and wadding to size of quilt.

Bind quilt with fabric 7.

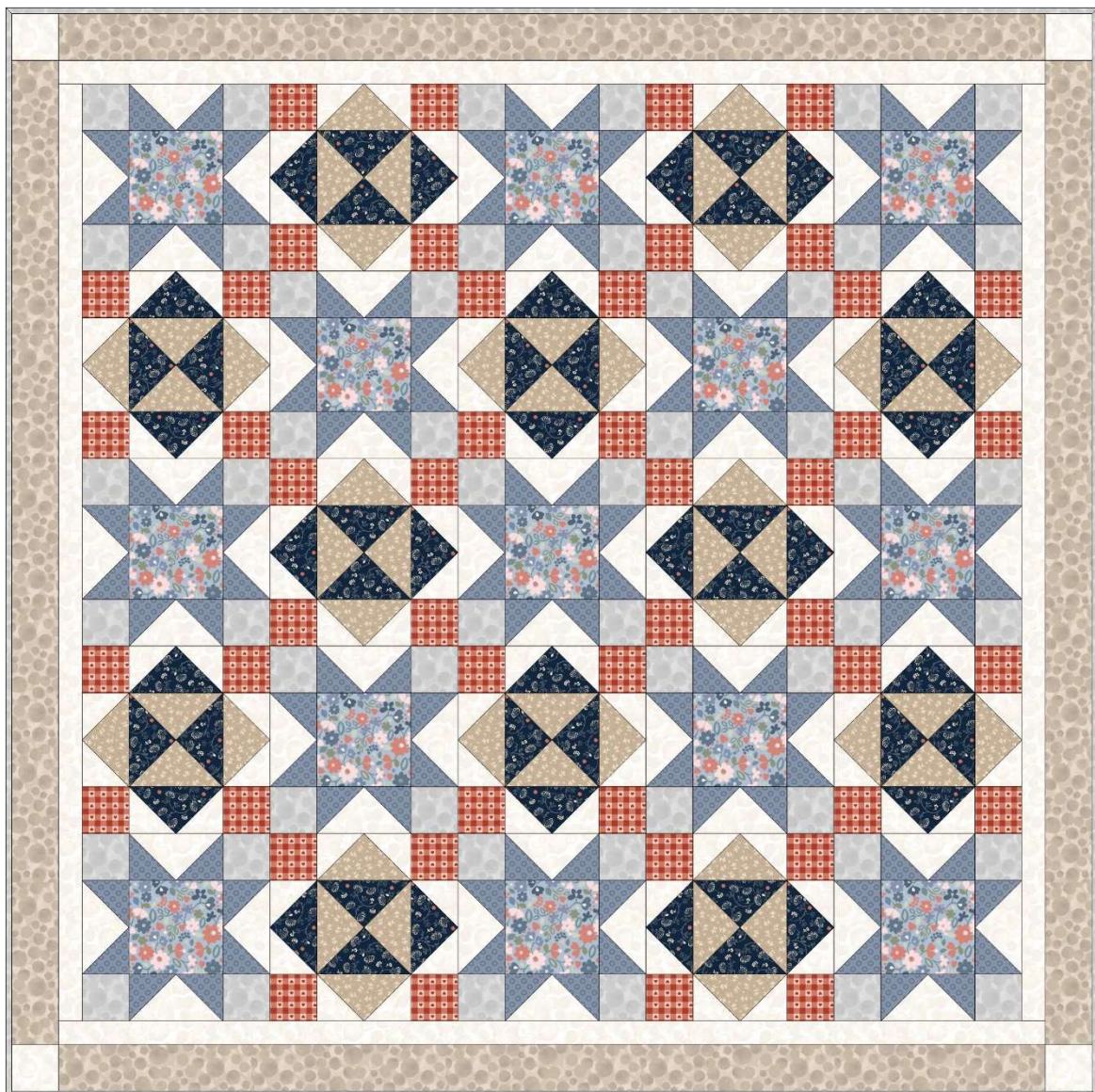


Sally Ablett © 2023



Designed and made by Sally Ablett - Throw 2

Size of runner 46" x 46" - unfinished block size 8½" x 8½"



Main Diagram

Requirements

Fabrics from the Grandma`s Quilt collection

1. A774.2 - Ditzzy floral on blue - $\frac{3}{8}$ yd - 40cm
2. A775.1 - Flower dot blue - fat $\frac{1}{4}$
3. A776.3 - Small flowers on natural - $\frac{3}{8}$ yd
4. A777.3 - Heart gingham red - fat $\frac{1}{4}$
5. A778.1 - Flower chains on blue - $\frac{3}{8}$ yd - 40cm
6. BB01 - White - 1yd - 1m
7. BB03 - Light grey - 1yd - 1m

Wadding and backing 50" x 50"

Cutting

From fabric 1 cut

13 x 4 $\frac{1}{2}$ " x 4 $\frac{1}{2}$ " (block 1)

From fabric 2 cut

52 x 2 $\frac{7}{8}$ " x 2 $\frac{7}{8}$ " cut in half diagonally once (block 1)

From fabric 3 cut

12 x 5 $\frac{1}{4}$ " x 5 $\frac{1}{4}$ " cut in half diagonally twice (block 2)

From fabric 4 cut

48 x 2 $\frac{1}{2}$ " x 2 $\frac{1}{2}$ " (block 2)

From fabric 5 cut

12 x 5 $\frac{1}{4}$ " x 5 $\frac{1}{4}$ " cut in half diagonally twice (block 2)

From fabric 6 cut

13 x 5 $\frac{1}{4}$ " x 5 $\frac{1}{4}$ " cut in half diagonally twice (block 1)

48 x 2 $\frac{7}{8}$ " x 2 $\frac{7}{8}$ " cut in half diagonally once (block 2)

2 x 1" x 42 $\frac{1}{2}$ " top & bottom (inner border)

2 x 1 $\frac{1}{2}$ " x 40 $\frac{1}{2}$ " sides (inner border)

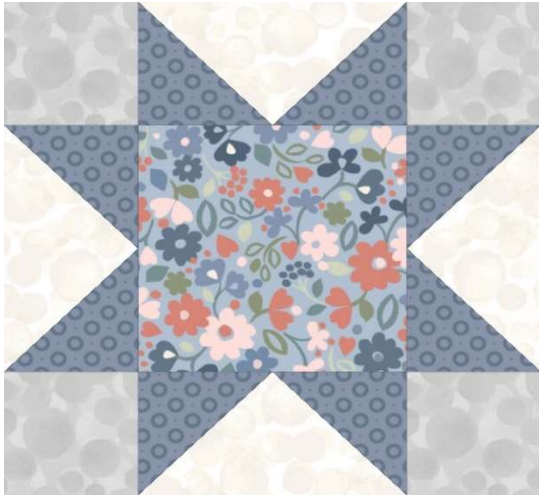
4 x 2 $\frac{1}{2}$ " x 2 $\frac{1}{2}$ " (corners on outer border)

From fabric 7 cut

4 x 2 $\frac{1}{2}$ " x 42 $\frac{1}{2}$ " (outer border)

52 x 2 $\frac{1}{2}$ " x 2 $\frac{1}{2}$ " (block 1)

Blocks



Block 1 diagram



Block 2 diagram

Block 1.

Lay out the fabric pieces for the block as in the diagram.

Sew a small triangle on the long side to each side of the larger triangle on the short side. This is a Flying Geese block.

Lay out the block pieces. Stitch the rows together and then sew your rows to complete the block. Sew 13 in total.

Block 2.

You have a Flying Geese block again, so sew as before. The center you will stitch two of the triangles together to make a larger triangle. Do this to the other set. Stich the two tringles together to made a square.

Place the pieces as in the diagram for block 2. Stitch in rows and then sew the rows together to complete the block. Sew 12 in total.

Making up quilt center

Lay out the blocks as in the main diagram.

Sewing in rows. If you press your seams to the left and then on the next row to the right. This will help when sewing the rows together.

5 blocks by 5 blocks.

Borders

Inner border

Stitch the sides 1½" x 40½" to the throw press back and then the top and bottom 1½" x 42½".

Outer border

Take 2 strips 2½" x 42½". Stitch to the sides of the throw, press back.

On the other 2 strips add a square to each end.

Sew to the top and bottom to the throw to complete.

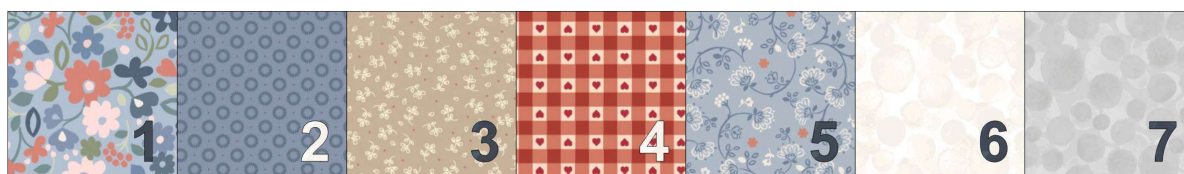
Quilting and binding

Sandwich the quilt top, wadding and backing together.

Quilt by hand or machine as desired.

Trim the backing and wadding to size of quilt.

Bind quilt with fabric 7.

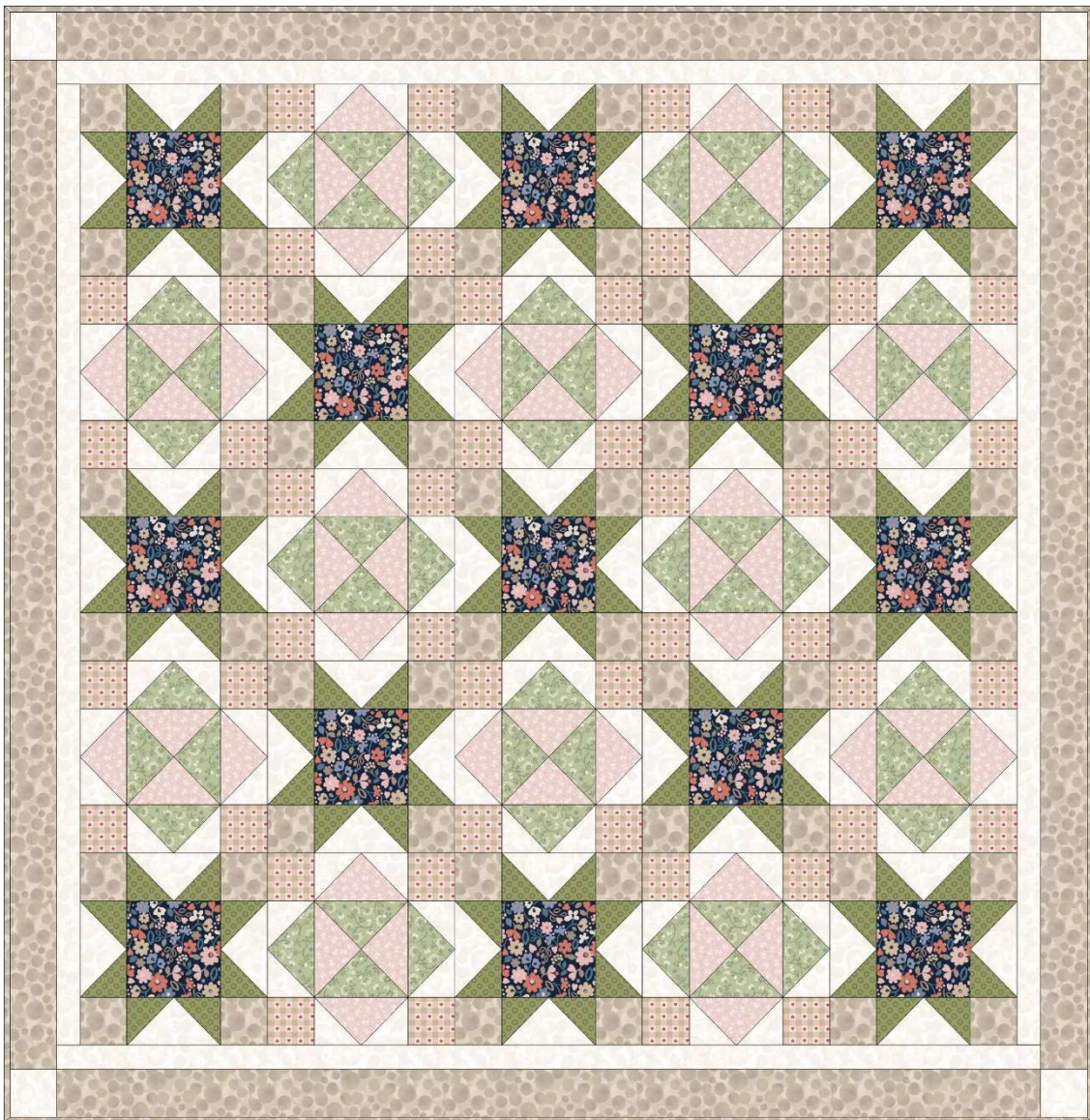


Sally Ablett © 2023



Designed and made by Sally Ablett - Throw 3

Size of runner 46" x 46" - unfinished block size 8½" x 8½"



Main Diagram

Requirements

Fabrics from the Grandma's Quilt collection

1. A774.2 - Ditzzy floral on blue - $\frac{3}{8}$ yd - 40cm
2. A775.1 - Flower dot blue - fat $\frac{1}{4}$
3. A776.3 - Small flowers on natural - $\frac{3}{8}$ yd
4. A777.3 - Heart gingham red - fat $\frac{1}{4}$
5. A778.1 - Flower chains on blue - $\frac{3}{8}$ yd - 40cm
6. BB01 - White - 1yd - 1m
7. BB03 - Light grey - 1yd - 1m

Wadding and backing 50" x 50"

Cutting

From fabric 1 cut

13 x 4 $\frac{1}{2}$ " x 4 $\frac{1}{2}$ " (block 1)

From fabric 2 cut

52 x 2 $\frac{7}{8}$ " x 2 $\frac{7}{8}$ " cut in half diagonally once (block 1)

From fabric 3 cut

12 x 5 $\frac{1}{4}$ " x 5 $\frac{1}{4}$ " cut in half diagonally twice (block 2)

From fabric 4 cut

48 x 2 $\frac{1}{2}$ " x 2 $\frac{1}{2}$ " (block 2)

From fabric 5 cut

12 x 5 $\frac{1}{4}$ " x 5 $\frac{1}{4}$ " cut in half diagonally twice (block 2)

From fabric 6 cut

13 x 5 $\frac{1}{4}$ " x 5 $\frac{1}{4}$ " cut in half diagonally twice (block 1)

48 x 2 $\frac{7}{8}$ " x 2 $\frac{7}{8}$ " cut in half diagonally once (block 2)

2 x 1" x 42 $\frac{1}{2}$ " top & bottom (inner border)

2 x 1 $\frac{1}{2}$ " x 40 $\frac{1}{2}$ " sides (inner border)

4 x 2 $\frac{1}{2}$ " x 2 $\frac{1}{2}$ " (corners on outer border)

From fabric 7 cut

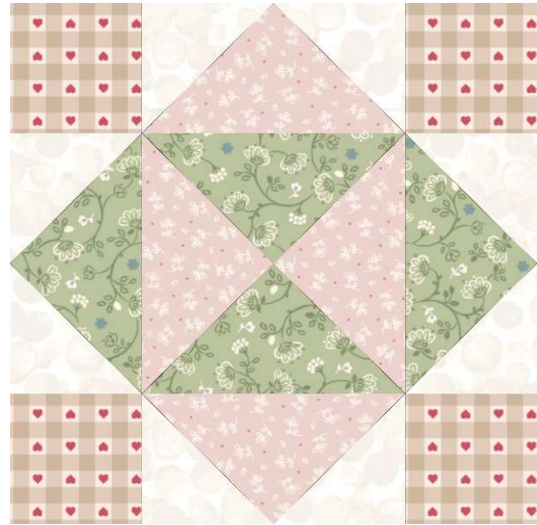
4 x 2 $\frac{1}{2}$ " x 42 $\frac{1}{2}$ " (outer border)

52 x 2 $\frac{1}{2}$ " x 2 $\frac{1}{2}$ " (block 1)

Blocks



Block 1 diagram



Block 2 diagram

Block 1.

Lay out the fabric pieces for the block as in the diagram.

Sew a small triangle on the long side to each side of the larger triangle on the short side. This is a Flying Geese block.

Lay out the block pieces. Stitch the rows together and then sew your rows to complete the block. Sew 13 in total.

Block 2.

You have a Flying Geese block again, so sew as before. The center you will stitch two of the triangles together to make a larger triangle. Do this to the other set. Stich the two tringles together to made a square.

Place the pieces as in the diagram for block 2. Stitch in rows and then sew the rows together to complete the block. Sew 12 in total.

Making up quilt center

Lay out the blocks as in the main diagram.

Sewing in rows. If you press your seams to the left and then on the next row to the right. This will help when sewing the rows together.

5 blocks by 5 blocks.

Borders

Inner border

Stitch the sides $1\frac{1}{2}$ " x $40\frac{1}{2}$ " to the throw press back and then the top and bottom $1\frac{1}{2}$ " x $42\frac{1}{2}$ ".

Outer border

Take 2 strips $2\frac{1}{2}$ " x $42\frac{1}{2}$ ". Stitch to the sides of the throw, press back.

On the other 2 strips add a square to each end.

Sew to the top and bottom to the throw to complete.

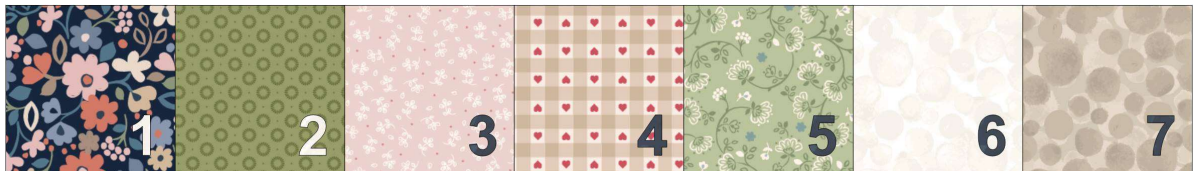
Quilting and binding

Sandwich the quilt top, wadding and backing together.

Quilt by hand or machine as desired.

Trim the backing and wadding to size of quilt.

Bind quilt with fabric 7.



Sally Ablett © 2023